

TRIGGER GAP (17A) 5 SW UTC-6(-5DT) N36°19.70' W93°37.33'

KANSAS CITY

1650 NOTAM FILE JBR
RWY 10-28: 3000X75 (TURF) 1.4% up E
RWY 10: Tree. Rgt tfc.
RWY 28: Trees.

AIRPORT REMARKS: Unattended. Deer on and invof arpt.

AIRPORT MANAGER: 817-938-3334

COMMUNICATIONS: CTAF 122.9

CLEARANCE DELIVERY PHONE: For CD ctc Razorback Apch 479-649-2416, when Apch clsd ctc Memphis ARTCC at 901-368-8453/8449.

BILL AND HILLARY CLINTON NTL/ADAMS FLD (See LITTLE ROCK on page 61)

BILLY FREE MUNI (See DUMAS on page 46)

BLYTHEVILLE

ARKANSAS INTL (BYH)(KBYH) 3 NW UTC-6(-5DT) N35°57.86' W89°56.64'

MEMPHIS

254 B NOTAM FILE BYH

H-6J, L-16H

RWY 18-36: H11602X150 (CONC) S-155, D-235, 2D-455

IAF

HIRL(NSTD)

RWY 36: VASI(V4L)—GA 3.0° TCH 51'.

SERVICE: S5 FUEL 100LL, JET A LGT Dusk-Dawn. Actvt HIRL Rwy 18-36—CTAF. Rwy 18-36 Nstd HIRL; lctd 77' fm rwy edge and nstd dstc fm cntrln. Dpt perception problems may exist durg pds of darkness. Rwy 36 VASI OTS indefly.

AIRPORT REMARKS: Attended Mon-Fri 1400-2300Z. Arpt unattended holidays. Fuel avbl 24 hrs self serve with credit card (100 LL). No fee charged for svc after hrs ctc/leave msg 870-532-5628. Twy A btn Twy B and Twy D tkof and ldg avbl to mil acft.

AIRPORT MANAGER: 870-532-5628

COMMUNICATIONS: CTAF/UNICOM 122.7

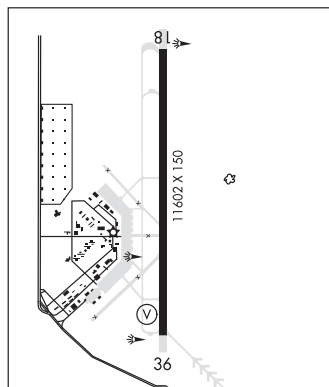
Ⓜ **MEMPHIS CENTER APP/DEP CON** 134.65

CLEARANCE DELIVERY PHONE: For CD ctc Memphis ARTCC at 901-368-8453/8449.

RADIO AIDS TO NAVIGATION: NOTAM FILE DYR.

DYERSBURG (L) TACAN Chan 115 DYR (116.8) N36°01.11' W89°19.06' 261° 30.7 NM to fld. 389/3E.

ILS/DME 110.3 I-BYH Chan 40 Rwy 18. Class IT. Unmonitored.



BLYTHEVILLE MUNI (HKA)(KHKA) 3 E UTC-6(-5DT) N35°56.43' W89°49.85'

MEMPHIS

256 B TPA—See Remarks NOTAM FILE HKA

L-16H

RWY 18-36: H4999X75 (ASPH) S-15 MIRL

IAF

RWY 18: PAPI(P4L)—GA 3.0° TCH 48'.

RWY 36: PAPI(P4L)—GA 3.0° TCH 48'.

SERVICE: S2 FUEL 100LL, JET A LGT ACTIVATE MIRL Rwy 18-36—CTAF. PAPI Rwy 18 and Rwy 36 opr continuously. Wind indicator lgt temporarily OTS.

AIRPORT REMARKS: Attended 1330-2330Z. For arpt attendant after hours call 870-740-0798/0660. Numerous agricultural acft ops from Feb-Nov 250' AGL and below, right and left TPA.

AIRPORT MANAGER: 870-763-0200

WEATHER DATA SOURCES: ASOS 135.025 (870) 763-8206.

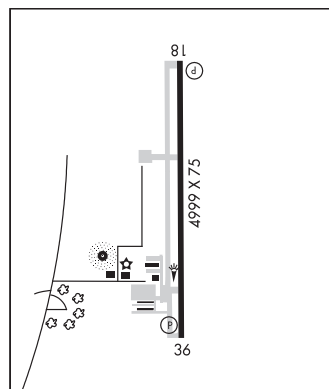
COMMUNICATIONS: CTAF/UNICOM 123.05

Ⓜ **MEMPHIS CENTER APP/DEP CON** 134.65

CLEARANCE DELIVERY PHONE: For CD ctc Memphis ARTCC at 901-368-8453/8449.

RADIO AIDS TO NAVIGATION: NOTAM FILE DYR.

DYERSBURG (L) TACAN Chan 115 DYR (116.8) N36°01.11' W89°19.06' 257° 25.4 NM to fld. 389/3E.



BOONE CO (See HARRISON on page 53)