

CONTINUED FROM PRECEDING PAGE

AIRSPACE: CLASS D svc 1200-0300Z†; other times CLASS E.

RADIO AIDS TO NAVIGATION: NOTAM FILE ORL.

ORLANDO (VH) (H) VORTACW 112.2 ORL Chan 59 N28°32.56' W81°20.10' at fld. 102/0E.

TACAN AZIMUTH unusable:

- 066°-084°
- 246°-289° byd 17 NM blo 2,000'
- 246°-289° byd 28 NM blo 2,500'

VOR unusable:

- 075°-089° byd 40 NM blo 8,000'
- 075°-089° byd 53 NM
- 090°-100° byd 40 NM
- 235°-245° byd 40 NM
- 260°-296° byd 40 NM blo 2,000'
- 260°-296° byd 46 NM blo 5,000'
- 260°-296° byd 57 NM
- 300°-314° byd 40 NM blo 4,000'
- 300°-314° byd 55 NM blo 6,000'
- 300°-314° byd 66 NM
- 320°-330° byd 40 NM
- 340°-345° byd 40 NM

ILS 109.9 I-ORL Rwy 07. Class IB. Unmonitored when ATCT clsd. Autopilot cpd apch NA blw 320' MSL.

ILS/DME 109.35 I-EXO Chan 30(Y) Rwy 25. Unmonitored when ATCT clsd.

COMM/NAV/WEATHER REMARKS: ATC radar req when ORL ILS Rwy 07 and MCO ILS Rwy 17 and 18R simultaneous ops are conducted.

KISSIMMEE GATEWAY (ISM)(KISM) 16 SW UTC-5(-4DT) N28°17.39' W81°26.22'

JACKSONVILLE

H-8H, L-21D, 24F

IAP, AD

82 B NOTAM FILE ISM

RWY 15-33: H6001X100 (ASPH-GRVD) S-114, D-189, 2S-95,

2D-300 PCN 45 F/A/X/T MIRL

RWY 15: MALSf. PAPI(P4L)—GA 3.0° TCH 49'. Tree. Rgt tfc.

RWY 33: REIL. PAPI(P4L)—GA 3.0° TCH 48'. Fence.

RWY 06-24: H5001X100 (ASPH-GRVD) S-89, D-140

PCN 33 F/A/X/T MIRL

RWY 06: REIL. PAPI(P4L)—GA 3.0° TCH 45'. Trees. Rgt tfc.

RWY 24: REIL. PAPI(P4L)—GA 3.0° TCH 45'. Pole.

SERVICE: S4 FUEL 100LL, JET A OX1 LGT When twr clsd, ACTIVATE MALSf Rwy 15, REIL Rwy 06, Rwy 24 and Rwy 33, PAPI Rwy 06, Rwy 15, Rwy 24 and Rwy 33, MIRL Rwy 06-24 and Rwy 15-33—CTAF.

NOISE: Noise sensitive area 1/2 mi N of AER 24. Dep Rwy 06 early turnouts not authorized. Req all jets/turbo props use NBAA close-in proc.

AIRPORT REMARKS: Attended 1200-0300Z†. Low lvl VFR hel, wildlife and birds on and invof arpt. Ultraigt acft na except PPR—amgr. Hel run on Indg na. Rwy 15 has unlgtd obstns present in the apch due to 52 ft trees 1960 ft bfr AER. Rwy 33 mult unlgtd obstns first 3000'; 250-500' E and W of cntrln. Rwy 06 holding bay rstrd to acft with wingspan of 49' or less. Rwy 15 calm wind rwy.

AIRPORT MANAGER: 407-518-2516

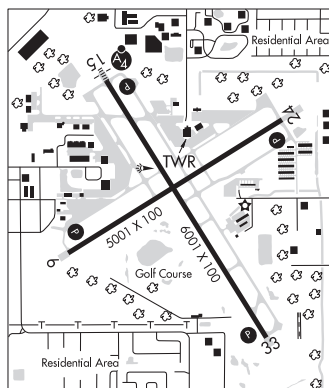
WEATHER DATA SOURCES: AWOS-3PT (407) 847-0533

COMMUNICATIONS: CTAF 124.45 ATIS 128.775 UNICOM 122.95

® ORLANDO APP/DEP CON 119.4

TOWER 124.45 (1200-0300Z†) GND CON 121.7

CLNC DEL 121.7 CLNC DEL 123.95 (when twr clsd)



CONTINUED ON NEXT PAGE

CONTINUED FROM PRECEDING PAGE

AIRSPACE: CLASS D svc 1200-0300Z±; other times CLASS G.

RADIO AIDS TO NAVIGATION: NOTAM FILE ORL.

ORLANDO (WH) (H) VORTACW 112.2 ORL Chan 59 N28°32.56' W81°20.10' 200° 16.1 NM to fld. 102/0E.

TACAN AZIMUTH unusable:

- 066°-084°
- 246°-289° byd 17 NM blo 2,000'
- 246°-289° byd 28 NM blo 2,500'

VOR unusable:

- 075°-089° byd 40 NM blo 8,000'
- 075°-089° byd 53 NM
- 090°-100° byd 40 NM
- 235°-245° byd 40 NM
- 260°-296° byd 40 NM blo 2,000'
- 260°-296° byd 46 NM blo 5,000'
- 260°-296° byd 57 NM
- 300°-314° byd 40 NM blo 4,000'
- 300°-314° byd 55 NM blo 6,000'
- 300°-314° byd 66 NM
- 320°-330° byd 40 NM
- 340°-345° byd 40 NM

ILS/DME 109.75 I-SM Chan 34(Y) Rwy 15. Unmonitored.

ORLANDO INTL (MCO)(KMCO) P (AF) 6 SE UTC-5(-4DT) N28°25.76' W81°18.54'

JACKSONVILLE  
H-8H, L-21D, 24F  
IAP, AD

96 B LRA Class I, ARFF Index E NOTAM FILE MCO

RWY 18L-36R: H12005X200 (ASPH-CONC-GRVD) S-165, D-200,

2S-175, 2D-400 PCN 97 R/B/W/T HIRL CL

RWY 18L: PAPI(P4L)—GA 3.0° TCH 71'. RVR-TMR

RWY 36R: ALSF2. TDZL. PAPI(P4L)—GA 3.0° TCH 70'. RVR-TMR

RWY 36L-36L: H12004X200 (ASPH-CONC-GRVD) S-100, D-200,

2S-175, 2D-400 PCN 104R/B/W/T HIRL CL

RWY 18R: MALS.R. TDZL. PAPI(P4L)—GA 3.0° TCH 71'. RVR-TMR

RWY 36L: REIL. PAPI(P4L)—GA 3.0° TCH 69'. RVR-TMR

RWY 17R-35L: H10000X150 (CONC-GRVD) S-75, D-210, 2S-175,

2D-400 PCN 106R/B/W/T HIRL CL

RWY 17R: ALSF2. TDZL. PAPI(P4L)—GA 3.0° TCH 71'. RVR-TMR

RWY 35L: ALSF2. TDZL. PAPI(P4R)—GA 3.0° TCH 72'. RVR-TMR

RWY 17L-35R: H9001X150 (CONC-GRVD) S-75, D-210, 2D-420,

2D/2D2-900 PCN 116R/B/W/T HIRL CL

RWY 17L: ALSF2. TDZL. PAPI(P4L)—GA 3.0° TCH 72'. RVR-TMR

RWY 35R: ALSF2. TDZL. PAPI(P4R)—GA 3.0° TCH 73'. RVR-TMR

RUNWAY DECLARED DISTANCE INFORMATION

RWY 17L:TORA-9001 TODA-9001 ASDA-9001 LDA-9001

RWY 17R:TORA-10000 TODA-10000 ASDA-10000 LDA-10000

RWY 18L:TORA-12005 TODA-12005 ASDA-12005 LDA-12005

RWY 18R:TORA-12004 TODA-12004 ASDA-12004 LDA-12004

RWY 35L:TORA-10000 TODA-10000 ASDA-10000 LDA-10000

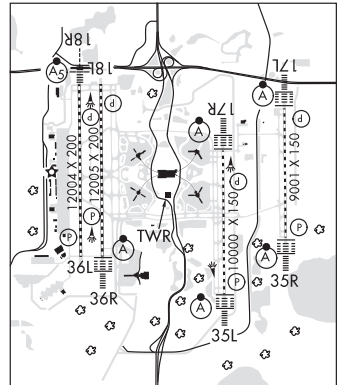
RWY 35R:TORA-9001 TODA-9001 ASDA-9001 LDA-9001

RWY 36L:TORA-12004 TODA-12004 ASDA-11621 LDA-11621

RWY 36R:TORA-12005 TODA-12005 ASDA-11601 LDA-11601

SERVICE: S2 FUEL 100LL, JET A LGT Rwy 17L-35R TDZL unlit 0400-1100Z±. MILITARY—FUEL A, A+ (C407-851-8304.) (NC-100LL)

**AIRPORT REMARKS:** Attended continuously. Birds and deer on and invof arpt. Use caution invof Twy A along west ramp. Rwy 18L-36R ctr 75' keel section of rwy conc full length, ctr 100' keel section of rwy conc first 1000', both ends. Rest of rwy width is asph. Rwy 18R-36L ctr 87' keel section of rwy conc full length, rest of rwy width is asph. Last 3000' of Rwy 18R is conc full width. ASDE-X in use. Operate transponders with altitude reporting mode and ADS-B (if equipped) enabled on all airport surfaces. Unless advised by ATIS, dep flts on initial ctc with GND CON, acft on West ramp, Airside 1 and 3 (Gates 1-59) use GND CON 121.8. Acft at Airside 2 and 4 (Gates 60 and higher), use GND CON 126.4. When ORL ILS Rwy 07 and MCO ILS Rwy 17 and 18R simultaneous ops are conducted, ATC radar rqr. Bright lgts on road btn Rwy 17R-35L and Rwy 17L-35R may be mistaken for rwy lgts. Acft with wingspan greater than 214' must adhere to specific rwy and taxi rts. Ctc fldd ops at 407-825-2036 for details. Rwy status lgts are in opr. Avoid ctc with twy edge lgts, all acft determined to be FAA Design Group IV and abv must perform judgmental oversteering instead of cockpit cntrln steering when taxiing. Twy J3 and Twy J4 rstd to wingspan of less than 118'. Twy A, south of Twy A3, rstd to wingspan of less than 118'. PPR rqr for wingspan 118' or greater. West ramp customs inspection parking area rstd to acft wingspan less than 118'. Twy A, btn W ramp S end and Twy B10, rstd to acft wingspan less than 171'. PPR for acft wingspan 171' or greater. Flight Notification Service (ADCUS) avbl.



CONTINUED ON NEXT PAGE