

**EAST GEORGIA RGNL** (See SWAINSBORO on page 250)

**EASTMAN**

**HEART OF GEORGIA RGNL** (EZM)(KEZM) 3 E UTC-5(-4DT) N32°12.98' W83°07.72'

**ATLANTA**  
H-9B, 12F, L-18J  
IAP, AD

303 B NOTAM FILE MCN MON Airport  
**RWY 02-20:** H6506X100 (ASPH-GRVD) S-75, D-120 HIRL  
**RWY 02:** MALSR. PAPI(P4L)—GA 3.0° TCH 45'.  
**RWY 20:** REIL. PAPI(P4L)—GA 3.0° TCH 45'.  
**SERVICE:** S4 FUEL 100LL, JET A+ LGT ACTVT MALSR Rwy 02; REIL Rwy 20; PAPI Rwy 02 and Rwy 20; HIRL Rwy 02-20—CTAF. Rotating bcn ops dusk-0500Z†.

**AIRPORT REMARKS:** Attended Mon-Sat 1300-2300Z†, Sun 1800-2200Z†. Deer and otr wildlife invof arpt. Flt trng in area. 24 hr self-fueling with credit card.

**AIRPORT MANAGER:** 478-220-5091  
**WEATHER DATA SOURCES:** AWOS-3 119.425 (478) 374-9979.  
**COMMUNICATIONS:** CTAF 124.55 ATIS 119.425 UNICOM 122.95

Ⓡ **JACKSONVILLE CENTER APP/DEP CON** 127.575  
**TOWER** 124.55 (Mon-Thu 1100-2000Z†, Fri 1200-1600Z†)  
**GND CON** 121.175

**CLEARANCE DELIVERY PHONE:** For CD when ATCT is clsd ctc Jacksonville ARTCC at 904-845-1592.

**AIRSPACE:** CLASS D svc Mon-Thu 1100-2000Z†, Fri 1200-1600Z†; other times CLASS G.

**RADIO AIDS TO NAVIGATION:** NOTAM FILE MCN.

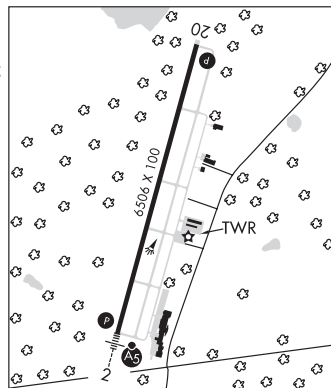
**VIENNA (VL) (L) VORTAC** 116.5 VNA Chan 112 N32°12.81' W83°29.84' 088° 18.8 NM to fld. 300/1E.

DME unusable:  
014°-024°

**EASTMAN NDB (MHW)** 366 EZM N32°07.90' W83°09.24' 018° 5.2 NM to fld. 321/4W.

ILS 109.55 I-HUV Rwy 02. Class IT.

**COMM/NAV/WEATHER REMARKS:** Apch/Dep svc prvdd by Jacksonville ARTCC on freqs 127.575/269.025 (Alma RCAG).



**ELBERT CO-PATZ FLD** (See ELBERTON on page 219)

**ELBERTON**

**ELBERT CO-PATZ FLD** (EBA)(KEBA) 2 E UTC-5(-4DT) N34°05.72' W82°49.05'

**ATLANTA**  
H-9B, L-18J  
IAP

615 B NOTAM FILE MCN  
**RWY 11-29:** H5004X75 (ASPH) S-30 MIRL  
**RWY 11:** PAPI(P2L)—GA 3.75° TCH 42'. Trees.  
**RWY 29:** PAPI(P2L)—GA 3.75° TCH 39'. Trees.

**SERVICE:** FUEL 100LL LGT ACTVT PAPI Rwy 11 and 29; MIRL Rwy 11-29—CTAF. MIRL Rwy 11-29 unavbl durg light hrs, on photocell. Rwy 11 PAPI unusbl 6 degs right of RCL. Rwy 29 PAPI unusbl 8 degs left of RCL.

**AIRPORT REMARKS:** Attended Mon-Sat 1300-2300Z†, Sun 1800-2300Z†. Deer on and invof arpt. Road lctd 200' south of RCL. Rising terrain 10' high lctd north of Rwy 11-29 starting from RCL. Rwy 29 apch: trees 36' tall, lctd 452' from rwy end, 280' south of RCL. Trees 57' tall, lctd 770' from rwy end, 295' south of RCL. Trees 66' tall, lctd 992' from rwy end, 30' south of RCL.

**AIRPORT MANAGER:** 706-283-2035  
**WEATHER DATA SOURCES:** AWOS-3 118.15 (706) 283-8133.  
**COMMUNICATIONS:** CTAF/UNICOM 122.8

Ⓡ **ATLANTA CENTER APP/DEP CON** 127.5  
**CLEARANCE DELIVERY PHONE:** For CD ctc Atlanta ARTCC at 770-210-7692.  
**RADIO AIDS TO NAVIGATION:** NOTAM FILE AND.

**ELECTRIC CITY (L) (L) VORTACW** 108.6 ELW Chan 23 N34°25.15' W82°47.08' 185° 19.5 NM to fld. 736/OE.

