

SAVANNAH/HILTON HEAD INTL (SAV)(KSAV) P (ANG) 7 NW UTC-5(-4DT) N32°07.66' W81°12.13'

ATLANTA
H-9B, 12G, L-24H
IAP, AD

50 B TPA—See Remarks LRA Class I, ARFF Index C NOTAM FILE SAV

RWY 10-28: H9351X150 (CONC-GRVD) S-75, D-190, 2S-175, 2D-310 PCN 70 R/C/W/T HIRL CL

RWY 10: MALSR. TDZL. PAPI(P4L)—GA 3.0° TCH 69'. RVR-TM 0.5% up.

RWY 28: REIL. PAPI(P4L)—GA 3.0° TCH 66'. RVR-MR

RWY 01-19: H7002X150 (CONC-GRVD) S-75, D-190, 2S-175, 2D-310 PCN 70 R/C/W/T HIRL

RWY 01: PAPI(P4L)—GA 3.0° TCH 74'. RVR-TM

RWY 19: REIL. VASI(V4R)—GA 3.0° TCH 52'. RVR-MR

LAND AND HOLD—SHORT OPERATIONS

LDG RWY	HOLD—SHORT POINT	AVBL LDG DIST
RWY 01	10-28	4050
RWY 10	01-19	5450
RWY 28	01-19	3250

RUNWAY DECLARED DISTANCE INFORMATION

RWY 01: TORA-7002 TODA-7002 ASDA-7002 LDA-7002
RWY 10: TORA-9351 TODA-9351 ASDA-9351 LDA-9351
RWY 19: TORA-7002 TODA-7002 ASDA-7002 LDA-7002
RWY 28: TORA-9351 TODA-9351 ASDA-9351 LDA-9351

ARRESTING GEAR/SYSTEM

RWY 10 BAK-14 BAK 14A(B) (1500FT)

BAK-14 BAK 14A(B) (1977 FT) RWY 28

SERVICE: S4 **FUEL** 100LL, JET A, A++ **OX 1, 2, 3, 4** **LGT** When ATCT clsd ACTVT MALSR Rwy 10; REIL Rws 19 and 28; HIRL Rws 01-19 and 10-28—CTAF. VASI Rwy 19 and PAPI Rws 01, 10 and 28 oper continuously. MALSR Rwy 10 nstd spacing. **MILITARY—A—GEAR** BAK-12A cable raised by BAK-14 device O/R to Twr. **FUEL A, A+ (Avbl 1100-0300Z± C912-964-1557, OT 2 hr PN, C912-313-6310. Svc fee.) A++, A++ +100(MIL), (NC-100LL) TRAN ALERT** Tran acct prohibited when tran alert unavbl. Fleet svc unavbl.

AIRPORT REMARKS: Attended 1100-0400Z±. Birds and deer on and in/ov arpt. Airport CLSD to intl GA arr exc 24hr PPR ctc US CUST 912-232-7507 and servicing fixed base opr for processing and instructions. No 180° turns on asph for acct over 12,500 lbs gross. Rwy 01-19 ctr 75' keel section of rwy conc full length, last 500' conc, full width, both ends. All twy int conc exc Twy B at the North end of the rwy and Twy B2. Remainder of Rwy 01-19 asph. Rwy 10-28 ctr 75' keel section conc full length, all twy int conc exc Twy C2 and C3. Remainder of Rwy 10-28 asph. Twy B2, Twy C2 are ltd to 12,500 lbs. Twy A, Twy B, Twy C, Twy D, Twy E, Twy F, Twy G and Twy H are ltd to dual wheel acct up to 173,000 lbs and dual tandem wheel acct up to 310,000 lbs. Twy E clsd from Rwy 28 to but not incld Twy E2 to acct with wingspan of 175' or greater. Twy E2 connector clsd to acct ldg Rwy 28. Distance from touchdown too short for safe turn.

Acft/vehicles on the south end of Twy A and the east end of Twy E not visible from the ATCT. TPA—Mil jet overheads 2000'. PPR for access of gen avn acct on the acr trml ramp ctc 912-964-7501. Rwy 01 no RVR when twr clsd. Rwy 10 no RVR when twr clsd. Rwy 19 no RVR when twr clsd. Rwy 28 no RVR when twr clsd. Flight Notification Service (ADCUS) avbl.

MILITARY REMARKS: ANG BASH phase II 01 Apr-31 Oct. Ctc twr or comd post for bird haz. Wildlife most active +/-1 hr of SS or SR. Combat readiness trng cntr (CRTC)/ANG-PPR all acct. Dominance cntr (ADC)/ANG-PPR all acct. Ctc base ops DSN 860-3145/3497 C912-963-3145/3497. PPR rq for all acct 72 hr prior to arr, good for +/-1 hour. Coord of PPR outside of sked arr/dep block time by phone is rqr or will be considered cnl. Clsd Sat—Sun, and hol. Avbl weekend for HHQ or OBO msn with 24 hr PN to afld mgmt. Combat readiness trng cntr (CRTC)/Air Dominance Center (ADC) afld mgmt DSN 860-3145/3497, C912-963-3145. Duty hr 1230-2100Z± Mon-Fri. Clsd Sat-Sun, and hol; avbl wknd for HHQ or OBO msn with 24 hr pn to afld mgmt. Mil E2 taxilane. 165AW (C130 Unit) afld mgmt DSN 860-8184/8433, C912-966-8184. Duty hr 1230-2100Z± Mon-Thur, 1230-1900Z± Fri. Acft inbd to 165AW ctc Comd Post DSN 860-8244, C912-966-8244 or UHF 225.75 within 50 NM with ETA and req. ADC comsec storage unavbl. 165AW comsec storage up to secret avbl via comd post dur normal duty hr only.

AIRPORT MANAGER: 912-964-0514

WEATHER DATA SOURCES: ASOS (912) 966-0364 LAWRS. LLWAS.

COMMUNICATIONS: CTAF 125.975 ATIS 123.75 UNICOM 122.95

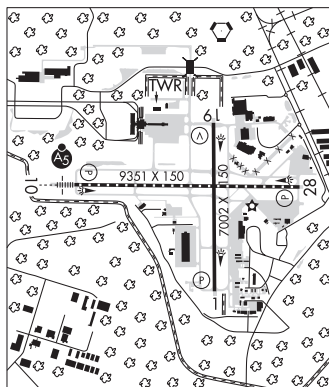
RCO 122.5 (MACON RADIO)

Ⓡ APP/DEP CON 118.4 270°-010° 120.4 110°-269° 125.3 11°-109° (1100-0500Z±)

Ⓡ JACKSONVILLE CENTER APP/DEP CON 132.925 11°-109° (0500-1100Z±)

TOWER 125.975 (1100-0500Z±) GND CON 121.9 CLNC DEL 119.55

CLEARANCE DELIVERY PHONE: For CD if una to ctc on FSS freq, ctc Savannah Apch at 912-964-3205, when Apch clsd ctc Jacksonville ARTCC at 904-845-1592.



CONTINUED ON NEXT PAGE

CONTINUED FROM PRECEDING PAGE

AIRSPACE: CLASS C svc ctc APP CON svc 1100-0500Z† other times CLASS E.

RADIO AIDS TO NAVIGATION: NOTAM FILE SAV.

(VH) (H) VORTACW 115.95 SAV Chan 106(Y) N32°08.78' W81°11.95' 194° 1.1 NM to fld. 22/6W.

DME unusable:

085°-100° byd 39 NM blo 3,000'

126°-132° byd 33 NM blo 3,000'

342°-343° byd 30 NM

TACAN AZIMUTH unusable:

248°-251° byd 31 NM blo 3,000'

342°-343° byd 30 NM

VOR unusable:

042°-047°

075°-089° byd 40 NM

098°-108° byd 40 NM

126°-130° byd 40 NM

271°-281° byd 40 NM

ILS 111.9 I-TPV Rwy 01. Class IA. LOC unusable byd 25° left and right of course. Unmonitored when ATCT clsd.

ILS/DME 111.35 I-SAV Chan 50(Y) Rwy 10. Class IE. Unmonitored when ATCT clsd.

COMM/NAV/WEATHER REMARKS: Arpt fire dept monitors freq 125.975 when ATCT clsd. Freq 125.975 monitored by Macon FSS when twr clsd.

SOPERTON

TREUTLEN CO (4J8) 2 E UTC-5(-4DT) N32°23.24' W82°33.80'

ATLANTA

345 NOTAM FILE MCN

L-24H

RWY 16-34: H3000X50 (ASPH)

RWY 16: Trees.

RWY 34: Trees.

AIRPORT REMARKS: Unattended.

AIRPORT MANAGER: 912-529-3664

COMMUNICATIONS: CTAF 122.9

CLEARANCE DELIVERY PHONE: For CD ctc Jacksonville ARTCC at 904-845-1592.

RADIO AIDS TO NAVIGATION: NOTAM FILE MCN.

DUBLIN (VL) (L) VORTAC 113.1 DBN Chan 78 N32°33.81' W82°49.80' 133° 17.2 NM to fld. 306/5W.

VOR unusable:

013°-038° byd 40 NM

040°-080°

102°-113° byd 40 NM

117°-129° byd 40 NM

153°-163° byd 40 NM blo 3,000'

153°-163° byd 80 NM

175°-189° byd 40 NM

274°-280° byd 40 NM

281°-291°

292°-308° byd 40 NM

309°-319° byd 40 NM blo 3,000'

309°-319° byd 80 NM

320°-332° byd 40 NM

343°-000° byd 40 NM blo 3,000'

343°-000° byd 52 NM

SOUTHWEST GEORGIA RGNL (See ALBANY on page 193)

SPENCE (See MOULTRIE on page 239)