

LEXINGTON

BLUE GRASS (LEX)(KLEX) 4 W UTC-5(-4DT) N38°02.20' W84°36.52'

CINCINNATI

980 B ARFF Index—See Remarks NOTAM FILE LEX MON Airport

H-10G, L-26F, 27E

RWY 04-22: H7004X150 (ASPH-GRVD) S-140, D-169, 2S-175,

IAP, AD

2D-275 PCN 59 F/B/W/T HIRL CL 0.5% up NE

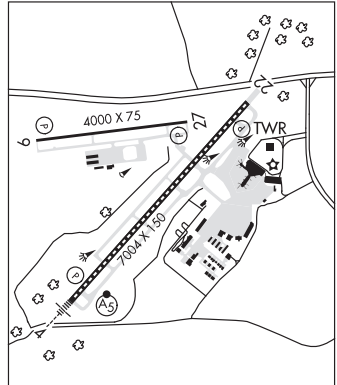
RWY 04: MALS R. TDZL. PAPI(P4L)—GA 3.0° TCH 60'. RVR-T Tree.

RWY 22: REIL. PAPI(P4L)—GA 3.0° TCH 60'. Tree.

RWY 09-27: H4000X75 (CONC) S-30 PCN 15 R/B/W/T MIRL
0.6% up E

RWY 09: REIL. PAPI(P4L)—GA 3.0° TCH 43'.

RWY 27: REIL. PAPI(P4L)—GA 3.0° TCH 43'.



RUNWAY DECLARED DISTANCE INFORMATION

RWY 04: TORA-7004 TODA-7004 ASDA-7004 LDA-6604

RWY 09: TORA-4000 TODA-4000 ASDA-4000 LDA-4000

RWY 22: TORA-7004 TODA-7004 ASDA-7004 LDA-6604

RWY 27: TORA-4000 TODA-4000 ASDA-4000 LDA-4000

SERVICE: S4 FUEL 100LL, JET A OX 1, 2, 3

AIRPORT REMARKS: Attended continuously. Twy B and Twy F west of Twy F3; not avbl for sked acr ops more than 9 pax seats or unsked acr at least 31 pax seats; clsd to acft with wingspan greater than 78 ft. Rwy 09-27 not avbl for sked acr ops more than 9 pax seats or unsked acr at least 31 pax seats. Class I, ARFF Index C. ICS/Index D ARFF cpblity upon req. Durg L pat, do not mistake Rwy 27 for Rwy 22.

Wall mural bfr Rwy 22 thr gives illusion of a bridge. Flight Notification Service (ADCUS) avbl. User fee arpt.

AIRPORT MANAGER: 859-425-3100

WEATHER DATA SOURCES: ASOS (859) 281-5700 LLWAS.

COMMUNICATIONS: ATIS 126.3 UNICOM 122.95

LEXINGTON RCO 122.1R 112.6T (LOUISVILLE RADIO)

LEXINGTON RCO 122.6 (LOUISVILLE RADIO)

® **APP/DEP CON 120.15 (040°-220°) 120.75 (221°-039°)**

TOWER 119.1 GND CON 121.9 CLNC DEL 132.35

AIRSPACE: CLASS C svc ctc **APP CON.**

RADIO AIDS TO NAVIGATION: NOTAM FILE LEX.

LEXINGTON (VL) (L) VOR/DME 112.6 HYK Chan 73 N37°57.98' W84°28.35' 303° 7.7 NM to fld. 1035/OE.

ILS 110.1 I-LEX Rwy 04. Class IA. Glideslope unusable 0.3 NM to thld.

ILS 111.75 I-GNJ Rwy 22. Class IA. LOC unusable byd 20° left and 20° right of course.