

WILLIAMS

H A CLARK MEML FLD (CMR)(KCMR) 3 N UTC-7 N35°18.33' W112°11.66'

PHOENIX
H-4J, L-8F
IAP

6691 B NOTAM FILE PRC

RWY 18-36: H6003X100 (ASPH) MIRL 1.0% up S

RWY 18: REIL. PAPI(P2L)—GA 3.0° TCH 46'. Tree.

RWY 36: REIL. PAPI(P2L)—GA 3.0° TCH 50'.

SERVICE: S4 FUEL 100LL, JET A1+ LGT ACTVT REIL Rwy 18 and Rwy 36; PAPI Rwy 18 and Rwy 36; MIRL Rwy 18-36—CTAF.

AIRPORT REMARKS: Attended Wed-Sun 1500-2200Z. 100LL fuel self svc with credit card H24. A1+ fuel full svc avbl by appt-amgr or 928-300-8385. Winter FICON—amgr. Rwy 18-36 has 10-15 ft trees and brush 120 ft W of cntrln full len. Rwy 18 has 393 ft hill 7800 ft fm rwy end on cntrln. Rwy 36 has 479 ft hill 8800 ft fm rwy end on cntrln.

AIRPORT MANAGER: 928-635-8982

WEATHER DATA SOURCES: AWOS-3 121.125 (928) 635-1278.

COMMUNICATIONS: CTAF/UNICOM 122.8

Ⓡ ALBUQUERQUE CENTER APP/DEP CON 128.45

CLEARANCE DELIVERY PHONE: For CD ctc Albuquerque ARTCC at 505-856-4861.

RADIO AIDS TO NAVIGATION: NOTAM FILE FLG.

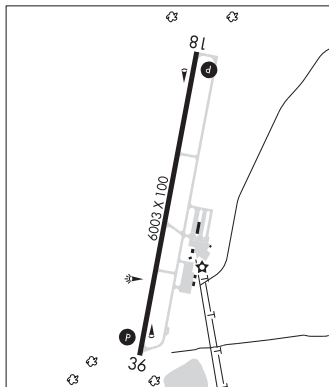
FLAGSTAFF (VH) (DH) VOR/DME 113.85 FLG Chan 85(Y)
N35°08.83' W111°40.45' 276° 27.3 NM to fld.
7026/14E.

VOR unusable:

030°-040° byd 40 NM
041°-051° byd 40 NM blo 18,000'
052°-061° byd 40 NM
062°-072° byd 40 NM blo 18,000'
073°-140° byd 40 NM
141°-151° byd 40 NM blo 18,000'
152°-159° byd 40 NM
160°-177° byd 40 NM blo 11,000'
160°-177° byd 48 NM blo 12,000'
160°-177° byd 63 NM
178°-231° byd 40 NM
232°-252° byd 40 NM blo 18,000'
253°-295° byd 40 NM
335°-030° byd 19 NM blo 24,000'
350°-026° byd 40 NM

DME unusable:

230°-255° byd 20 NM blo 15,000'



WILLIE N33°18.19' W111°39.09' NOTAM FILE IWA.

PHOENIX
H-4J, L-5B

(L) (L) **VORTACW** 113.3 IWA Chan 80 at Phoenix-Mesa Gateway. 1367/13E.

VOR unusable:

300°-320° byd 25 NM blo 7,500'
320°-300° byd 20 NM blo 7,500'

TACAN AZIMUTH unusable:

020°-055° byd 30 NM blo 12,000'
150°-195° byd 20 NM blo 7,500'

DME unusable:

020°-055° byd 30 NM blo 12,000'
150°-195° byd 20 NM blo 7,500'