

DELTA

BLAKE FLD (AJZ)(KAJZ) 3 N UTC-7(-6DT) N38°47.14' W108°03.72'

DENVER
H-3E, L-9E
IAP

5193 B TPA—6200(1007) NOTAM FILE DEN

RWY 03-21: H5598X75 (ASPH) S-30, D-30 MIRL 1.5% up NE

RWY 03: REIL. PAPI(P2L)—GA 3.0° TCH 40'. Rgt tfc.

RWY 21: REIL. PAPI(P2L)—GA 3.0° TCH 37'.

RWY 14-32: 2494X60 (DIRT) 1.4 % up NW

SERVICE: S3 FUEL 100LL, JET A OX3 LGT ACTVT REIL Rwy 03 and Rwy 21; MIRL Rwy 03-21—CTAF. PAPI Rwy 03 and 21 on consly.

AIRPORT REMARKS: Attended Mon-Fri 1500-0000Z†. 24 hr self serve fuel avbl. After hrs emerg fone, Sheriff Dept 970-874-2000/aft hrs svc 970-209-0883. Plines 2640' NW Rwy 03-21, +52' AGL. Rwy 21 has turn around taxi has blue/white reflectors. Rwy 03 has +4' fence 580' from thld OB. Antelope on and invof arpt. Rwy 03-21 has 4' bushes 15-20' from rwy edge on both sides in various places. Rwy 03-21 slopes up to the NE.

AIRPORT MANAGER: 970-874-5181

WEATHER DATA SOURCES: AWOS-3 134.0 (970) 874-3251.

COMMUNICATIONS: CTAF/UNICOM 122.8

DENVER CENTER APP/DEP CON 127.1

CLEARANCE DELIVERY PHONE: For CD ctc Denver ARTCC at 303-651-4257.

RADIO AIDS TO NAVIGATION: NOTAM FILE DEN.

GRAND JUNCTION (VH) (DH) VOR/DME 112.4 JNC Chan 71 N39°03.57' W108°47.55' 100° 37.9 NM to fld. 7100/15E.

DME unusable:

125°-135° byd 33 NM blo 12,000'

136°-176° byd 33 NM blo 14,000'

VOR unusable:

070°-076° byd 40 NM

077°-087° byd 40 NM blo 15,000'

077°-087° byd 66 NM

088°-092° byd 40 NM

093°-103° byd 40 NM blo 13,000'

093°-103° byd 51 NM

104°-124° byd 40 NM

125°-135° byd 33 NM blo 12,000'

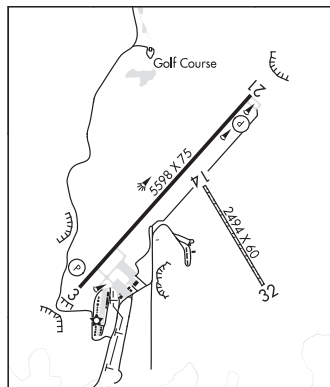
125°-135° byd 47 NM

136°-145° byd 40 NM

146°-156° byd 40 NM blo 15,000'

146°-156° byd 57 NM

157°-205° byd 40 NM



WESTWINDS (D17) 4 W UTC-7(-6DT) N38°45.51' W108°08.91'

DENVER
L-9E

5000 NOTAM FILE DEN

RWY 04-22: H4100X40 (ASPH)

RWY 22: Trees.

RWY 13-31: 2000X70 (GRVL-DIRT)

RWY 13: Hill.

RWY 31: Road.

AIRPORT REMARKS: Attended 1500-0000Z†. Rwy 04-22 CLOSED to actf 8,500 lbs or more. Wildlife on and invof arpt. +100' to 300' mountains lctd north, west and east of arpt at varying distances. Rwy 22 has 180' mountain 1500' from rwy end, apch slope 7:1. Rwy 13-31 soft when wet. Rwy 31 has +10' trees 150' from thld OB. +40' tree 60' from thld 50' rgt of cntrl. Rwy 04 has +120' terrain 2700' from thld 380' left of cntrl.

AIRPORT MANAGER: 303-829-1696

COMMUNICATIONS: CTAF/UNICOM 122.8

CLEARANCE DELIVERY PHONE: For CD ctc Denver ARTCC at 303-651-4257.

CONTINUED ON NEXT PAGE

CONTINUED FROM PRECEDING PAGE

RADIO AIDS TO NAVIGATION: NOTAM FILE MTJ.

MONTRÖSE (VH) (H) VOR/DME 117.1 MTJ Chan 118 N38°30.39' W107°53.96' 310° 19.1 NM to fld.

5713/12E. vDME unmonitored.

DME unusable:

011°-090° byd 26 NM blo 15,000'

190°-250° byd 25 NM blo 15,000'

VOR unusable:

001°-167° byd 40 NM

060°-090° byd 26 NM blo 16,000'

167°-178° byd 50 NM

168°-178° byd 40 NM blo 16,300'

179°-251° byd 40 NM

190°-250° byd 25 NM blo 15,000'

252°-262° byd 40 NM blo 13,000'

252°-262° byd 51 NM blo 15,500'

252°-262° byd 72 NM

263°-295° byd 40 NM

313°-360° byd 40 NM

DENVER

CENTENNIAL (APA)(KAPA) 15 SE UTC-7(-6DT) N39°34.21' W104°50.96'

5885 B NOTAM FILE APA

RWY 17L-35R: H10001X100 (ASPH-GRVD) S-56, D-75, 2S-95 PCN 26 F/C/X/T MIRL

RWY 17L: PAPI(P4L)—GA 3.0° TCH 47'. 1.0% up.

RWY 35R: MALSR. PAPI(P4L)—GA 3.0° TCH 49'. P-line. Rgt tfc. 0.8% down.

RWY 17R-35L: H7001X75 (ASPH-GRVD) S-30 PCN 23 F/C/X/T MIRL 0.9% up S

RWY 17R: REIL. PAPI(P4L)—GA 3.0° TCH 42'. Rgt tfc.

RWY 35L: REIL. PAPI(P4R)—GA 3.0° TCH 37'. Fence.

RWY 10-28: H4800X75 (ASPH-GRVD) S-12.5 PCN 17 F/A/Y/T MIRL 0.6% up W

RWY 10: PAPI(P2L)—GA 3.0° TCH 44'. Thld dsplcd 400'.

RWY 28: REIL. PAPI(P2L)—GA 3.0° TCH 41'. Pole.

SERVICE: S4 FUEL 100LL, JET A, UL94 OX 1, 2

NOISE: Noise abatement proc in efct; noise office—303-790-0598. Rwy 35R crosswind/base leg N of Lincoln Ave; Rwy 17L crosswind/base leg S of Arapahoe Road; Rwy 17R-35L clsd tfc remain S of Arapahoe Road and E of Interstate 25; Rwy 10-28 avoid noise sensitive area 1 mi S and E of rwy.

AIRPORT REMARKS: Attended continuously. 100LL: Self serve fuel avbl. Waterfowl on and in vicinity of arpt. Mult lrg pwr lines appxly 3 NM S of Rwy 35R and Rwy 35L. Numerous cranes invof arpt. Nmrs flood lgts 1/2 SM N of thr; SS-0700Z†. Adzy density alt dspl lctd C-1, A-1, and A-18. +109' twr located 1800' east/northeast of Rwy 17L thld. All acft blo cert 70,000 lb max gross tkof wt and Stage III acft up to cert 75,000 lb max gross tkof wt may opr; one-time exception auzd by Exec Dir. Heli ops ctc FBO for Indg zone lctn; heli ops on front ramp not advised. User fee arpt: H24 U.S. Customs—303-768-0309. CTN: Ensure proper rwy alnmt; close spaced parl rwys. Arpt safety video—https://www.faa.gov/airports/runway_safety/videos/apa/. NOTE: See Special Notices—USAF 306 FTG Flight Training Areas, Vicinity of Colorado Springs and Pueblo Colorado. See Special Notices—Arrival Alert.

AIRPORT MANAGER: 303-790-0598

WEATHER DATA SOURCES: ASOS (720) 873-2799

COMMUNICATIONS: ATIS 120.3 303-799-6722 UNICOM 122.95

DENVER RCO 122.2 (DENVER RADIO)

DENVER APP/DEP CON 132.75

TOWER 118.9 GND CON 121.8 CLNC DEL 128.6

AIRSPACE: CLASS D svc continuous.

VOR TEST FACILITY (VOT) 108.2

DENVER
H-3F, 5A, L-10F, A
IAP, AD

CONTINUED ON NEXT PAGE