

DENVER INTL (DEN)(KDEN) 16 NE UTC-7(-6DT) N39°51.70' W104°40.39'

DENVER
H-3F, 5A, L-10F, A
IAP, AD

5434 B LRA Class I, ARFF Index E NOTAM FILE DEN

RWY 16R-34L: H16000X200 (CONC-GRVD) S-116, D-240, 2S-175, 2D-515, 2D/2D2-1085 PCN 92 R/B/W/T HIRL CL

RWY 16R: MALSR. TDZL. PAPI(P4R)—GA 3.0° TCH 71'. RVR-TMR

RWY 34L: ALSF2. TDZL. PAPI(P4L)—GA 3.0° TCH 70'. RVR-TMR

RWY 07-25: H12000X150 (CONC-GRVD) S-116, D-240, 2S-175,

2D-515, 2D/2D2-1085 PCN 92 R/B/W/T HIRL CL

RWY 07: MALSR. TDZL. PAPI(P4R)—GA 3.0° TCH 68'. RVR-TMR

RWY 25: MALSR. PAPI(P4L)—GA 3.0° TCH 83'. RVR-TR

RWY 08-26: H12000X150 (CONC-GRVD) S-116, D-240, 2S-175,

2D-515, 2D/2D2-1085 PCN 92 R/B/W/T HIRL CL

RWY 08: MALSR. PAPI(P4L)—GA 3.0° TCH 70'. RVR-TR

RWY 26: MALSR. TDZL. PAPI(P4L)—GA 3.0° TCH 70'. RVR-TR

0.5% up.

RWY 16L-34R: H12000X150 (CONC-GRVD) S-116, D-240, 2S-175,

2D-515, 2D/2D2-1085 PCN 92 R/B/W/T HIRL CL

RWY 16L: MALSR. TDZL. PAPI(P4L)—GA 3.0° TCH 71'. RVR-TMR

RWY 34R: ALSF2. TDZL. PAPI(P4L)—GA 3.0° TCH 63'. RVR-TMR

RWY 17L-35R: H12000X150 (CONC-GRVD) S-116, D-240, 2S-175,

2D-515, 2D/2D2-1085 PCN 92 R/B/W/T HIRL CL

RWY 17L: MALSR. PAPI(P4L)—GA 3.0° TCH 66'. RVR-TMR 0.4% up.

RWY 35R: ALSF2. TDZL. PAPI(P4R)—GA 3.0° TCH 66'. RVR-TMR

RWY 17R-35L: H12000X150 (CONC-GRVD) S-116, D-240, 2S-175, 2D-515, 2D/2D2-1085 PCN 92 R/B/W/T HIRL CL

RWY 17R: MALSR. TDZL. PAPI(P4L)—GA 3.0° TCH 69'. RVR-TMR 0.5% up.

RWY 35L: ALSF2. TDZL. PAPI(P4R)—GA 3.0° TCH 71'. RVR-TMR

RUNWAY DECLARED DISTANCE INFORMATION

RWY 07: TORA-12000 TODA-12000 ASDA-12000 LDA-12000

RWY 08: TORA-12000 TODA-13000 ASDA-12000 LDA-12000

RWY 16L: TORA-12000 TODA-12000 ASDA-12000 LDA-12000

RWY 16R: TORA-16000 TODA-16000 ASDA-16000 LDA-16000

RWY 17L: TORA-12000 TODA-12000 ASDA-12000 LDA-12000

RWY 17R: TORA-12000 TODA-12000 ASDA-12000 LDA-12000

RWY 25: TORA-12000 TODA-13000 ASDA-12000 LDA-12000

RWY 26: TORA-12000 TODA-12000 ASDA-12000 LDA-12000

RWY 34L: TORA-16000 TODA-16000 ASDA-16000 LDA-16000

RWY 34R: TORA-12000 TODA-13000 ASDA-12000 LDA-12000

RWY 35L: TORA-12000 TODA-12000 ASDA-12000 LDA-12000

RWY 35R: TORA-12000 TODA-12000 ASDA-12000 LDA-12000

SERVICE: S4 FUEL 100LL, JET A OX 1, 3

NOISE: Informal rwy use program is in efct H24; noise abatement info-arpt mgmt at 303-342-4200.

AIRPORT REMARKS: Attended continuously. Waterfowl and birds invof arpt. ASDE-X in use. Operate transponders with altitude reporting mode and ADS-B if equipped enabled on all arpt sfcs. Dep Rwy 08, Rwy 25, and Rwy 34R has mntnd cwy 500 x 1000 ft 1.25 slope. Twy F7 clsd to acft wingspan more than 118'. Ovhd pax bridge S side of concourse-A prvds 42 ft tail and 118 ft wingspan clnc when on twy cntrln. Customs avbl PPR. Ldg fee. Flight Notification Service (ADCUS) avbl.

AIRPORT MANAGER: (303) 342-2206

WEATHER DATA SOURCES: ASOS (303) 342-1920 LLWAS. TDWR.

COMMUNICATIONS: D-ATIS ARR 125.6 303-342-0819 D-ATIS DEP 134.025 303-342-0820 UNICOM 122.95

RCO 122.2 (DENVER RADIO)

RCO 122.4 (DENVER RADIO)

Ⓡ APP CON 119.3 124.95 (North) 120.35 126.55 (South) FINAL CON 120.8

TOWER 124.3 (Rwy 17R-35L) 128.75 (Rwy 07-25) 132.35 (Rwy 08-26, Rwy 17L-35R) 135.3 (Rwy 16L-34R, Rwy 16R-34L) EMERG 121.5

GND CON 121.35 West (Rwy 07-25, Rwy 16L-34R, Rwy 16R-34L) 121.85 (Rwy 08-26, Rwy 17L-35R, Rwy 17R-35L) CLNC DEL 118.75

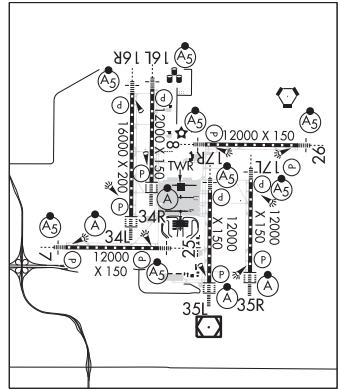
Ⓡ DEP CON 128.25 (East) 127.05 (North) 126.1 (West) 128.45 (South)

CPDLC (LOGON KUSA)

PDC

AIRSPACE: CLASS B See VFR Terminal Area Chart.

VOR TEST FACILITY (VOT) 110.0



CONTINUED ON NEXT PAGE

CONTINUED FROM PRECEDING PAGE

RADIO AIDS TO NAVIGATION: NOTAM FILE DEN.

(H) (H) VORW/DME 117.9 DEN Chan 126 N39°48.75' W104°39.64' 341° 3.0 NM to fld. 5452/8E.

VOR unusable:

180°-200° byd 20 NM blo 14,000'

ILS/DME 111.55 I-DZG Chan 52(Y) Rwy 07. Class IE.

ILS/DME 108.9 I-FUI Chan 26 Rwy 08. Class IE.

ILS/DME 111.1 I-LTT Chan 48 Rwy 16L. Class IE.

ILS/DME 111.9 I-DQQ Chan 56 Rwy 16R. Class IT.

ILS/DME 110.15 I-BXP Chan 38(Y) Rwy 17L. Class IE.

ILS/DME 108.5 I-ACX Chan 22 Rwy 17R. Class IE.

ILS/DME 111.55 I-ERP Chan 52(Y) Rwy 25. Class IE.

ILS/DME 108.9 I-JOY Chan 26 Rwy 26. Class IE.

ILS/DME 111.9 I-DXU Chan 56 Rwy 34L. Class IIIE.

ILS/DME 111.1 I-OUF Chan 48 Rwy 34R. Class IIIE.

ILS/DME 108.5 I-AQD Chan 22 Rwy 35L. Class IIIE.

ILS/DME 110.15 I-DPP Chan 38(Y) Rwy 35R. Class IIIE.

ROCKY MOUNTAIN METRO (BJC)(KBJC) 9 NW UTC-7(-6DT) N39°54.53' W105°07.03'

DENVER

5673 B ARFF Index—See Remarks NOTAM FILE BJC

H-3F, 5A, L-10F, A

RWY 12L-30R: H9000X100 (ASPH-GRVD) S-65, D-105, 2S-95,

IAP, AD

2D-150 PCN 31 F/D/W/T HIRL

RWY 12L: REIL. PAPI(P4L)—GA 3.0° TCH 41'. 1.0% down.

RWY 30R: MALSR. PAPI(P4L)—GA 3.0° TCH 52'. Rgt tfc. 1.1% up.

RWY 12R-30L: H7002X75 (ASPH-GRVD) S-47, D-61

PCN 18 F/D/X/T MIRL 1.1% up NW

RWY 12R: REIL. PAPI(P2L)—GA 3.0° TCH 40'. Rgt tfc.

RWY 30L: REIL. PAPI(P2L)—GA 3.0° TCH 41'.

RWY 03-21: H3600X75 (ASPH) S-40, D-45, 2D-65 MIRL

0.4% up S

RWY 03: PAPI(P2L)—GA 3.0° TCH 30'.

RWY 21: PAPI(P2L)—GA 3.0° TCH 40'. Rgt tfc.

RUNWAY DECLARED DISTANCE INFORMATION

RWY 03: TORA-3600 TODA-3600 ASDA-3600 LDA-3600

RWY 12L: TORA-9000 TODA-9000 ASDA-9000 LDA-9000

RWY 12R: TORA-7002 TODA-7002 ASDA-7002 LDA-7002

RWY 21: TORA-3600 TODA-3600 ASDA-3600 LDA-3600

RWY 30L: TORA-7002 TODA-7002 ASDA-7002 LDA-7002

RWY 30R: TORA-9000 TODA-9000 ASDA-9000 LDA-9000

SERVICE: S4 FUEL 100LL, JET A OX 1, 2, 3, 4 LGT When ATCT clsd

ACTVT MALSR Rwy 30R; REIL Rwy 12L, 12R and 30L; PAPI Rwy 03, 12L, 12R, 21, 30L and 30R; MIRL Rwy 03-21 and 12R-30L; HIRL Rwy 12L-30R—CTAF.

NOISE: Noise abatement proc in efct ctc noise office 303-271-4850.

AIRPORT REMARKS: Attended continuously. 100LL self svc. Birds and wildlife on and in/ov rwy. Hel arr/dep fm rwy and twys.

Pilots are requested to avoid flt due to nesting eagles: Below 6500 ft MSL, BJC VOR 25 deg radial, 2.7 DME; Over Standley Lake below 8000 ft MSL, BJC VOR 150 deg radial, 3.0 DME. Class II ARFF Index A. 24 hr PPR for unsked acf ops with more than 30 pax seats—720-352-0395. ARFF Index B avbl PPR—720-352-0395. Twy C1 and Twy D mkd with reflectors. N trml ramp slp exceeds rcmdnd std. Flight Notification Service (ADCUS) avbl. NOTE: See Special Notices—Extensive Helicopter Flight Training. See Special Notices—USAF 306 FTG Flight Training Areas, Vicinity of Colorado Springs and Pueblo Colorado. See Special Notices—Arrival Alert.

AIRPORT MANAGER: (303) 271-4851

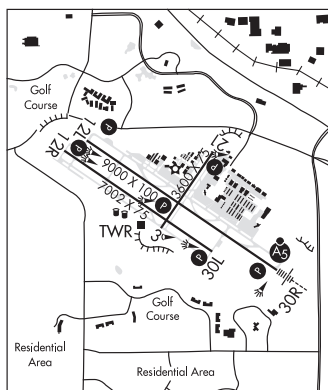
WEATHER DATA SOURCES: AWOS-3 (720) 887-8067

COMMUNICATIONS: CTAF 118.6 ATIS 126.25 303-466-8744

DENVER APP/DEP CON 125.12

METRO TOWER 118.6 (1300-0500Z) GND CON 121.7 CLNC DEL 132.6

AIRSPACE: CLASS D svc 1300-0500Z; other times CLASS G.



CONTINUED ON NEXT PAGE