

## PANACA

**LINCOLN CO** (1L1) 2 W UTC-8(-7DT) N37°47.25' W114°25.19'

4831 B TPA—5631(800) NOTAM FILE RNO

**RWY 17-35:** H4606X60 (ASPH) S-12.5 MIRL 0.7% up N

**RWY 17:** Hill.

**SERVICE:** FUEL 100LL LGT ACTVT MIRL Rwy 17-35—CTAF.

**AIRPORT REMARKS:** Unattended. Rwy 17 sfc marks weathered. Rwy 35 sfc marks weathered.

**AIRPORT MANAGER:** (702) 449-2418

**COMMUNICATIONS:** CTAF/UNICOM 122.8

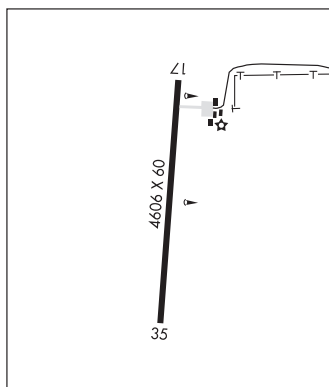
**CLEARANCE DELIVERY PHONE:** For CD ctc Nellis App at 702-652-4172.

**RADIO AIDS TO NAVIGATION:** NOTAM FILE RNO.

**WILSON CREEK (VH) (H) VORTAC** 116.3 ILC Chan 110 N38°15.01'  
W114°23.65' 167° 27.8 NM to fld. 9318/16E.

LAS VEGAS

L-9B



**PERKINS FLD** (See OVERTON on page 401)

## RENO

**RENO/STEAD** (RTS)(KRTS) P (ARNG) 10 NW UTC-8(-7DT) N39°40.09' W119°52.59'

5050 B TPA—See Remarks NOTAM FILE RTS MON Airport

**RWY 14-32:** H9000X150 (ASPH-GRVD) PCN 64 R/B/X/T HIRL

**RWY 14:** REIL. PAPI(P4L)—GA 3.0° TCH 40'.

**RWY 32:** MALSR. PAPI(P4L)—GA 3.0° TCH 39'. Thld dsplcd 1200'.

Rgt tfc.

**RWY 08-26:** H7608X150 (ASPH-GRVD) PCN 64 R/B/X/T HIRL

0.8% up E

**RWY 08:** REIL. PAPI(P4L)—GA 4.0° TCH 45'.

**RWY 26:** REIL. PAPI(P4L)—GA 3.0° TCH 46'. Rgt tfc.

**RUNWAY DECLARED DISTANCE INFORMATION**

**RWY 08:** TORA-6956 TODA-6956

LDA-6956

**RWY 26:**

LDA-7294

**RWY 32:**

LDA-7800

**SERVICE:** S4 FUEL 100LL, JET A OX 1, 3 LGT ACTVT MALSR Rwy 32; REIL Rwy 14; HIRL Rwy 14-32—CTAF. PAPI Rwy 32 on consly. Rwy 14 PAPI OTS indefly. Rwy 08 PAPI unusbl byd 5 degs right of cntrl.

**MILITARY—** JASU 1(MD-3M) 2(A-1) FUEL J4 (Mil) A (avbl 1600-0030Z‡ Mon-Fri, C775-972-5540. OT fee \$50. Emerg svc C775-530-8743.) (NC-100LL) FLUID HPOX

**AIRPORT REMARKS:** Attended Mon-Fri 1500-0030Z‡. Fuel avbl H24 — 775-530-7164 or 122.775. Parachute Jumping. Rng hel ops invof arpt; balloon ops NW quad; tanker and fire ops invof arpt durg fire season. TPA—6246(1200) heavy/high performance acct. Avoid overflt of housing areas east and west of fld. Cold temperature airport. Altitude correction required at or below -16C.

**AIRPORT MANAGER:** 775-328-6573

**WEATHER DATA SOURCES:** AWOS-3 135.175 (775) 677-0589.

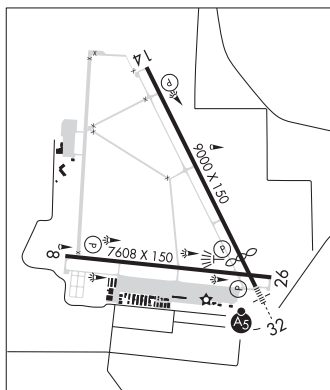
**COMMUNICATIONS:** CTAF/UNICOM 122.7

® NORCAL APP/DEP CON 126.3 (916-361-6874)

SAN FRANCISCO

H-3B, L-9A, 11A

IAP, AD



CONTINUED ON NEXT PAGE

CONTINUED FROM PRECEDING PAGE

CLEARANCE DELIVERY PHONE: For CD ctc NorCal Apmh at 916-361-0596.

RADIO AIDS TO NAVIGATION: NOTAM FILE RNO.

**MUSTANG (VH) (H) VORTACW** 117.9 FMG Chan 126 N39°31.88' W119°39.36' 293° 13.1 NM to fld. 5950/16E.

VOR unusable:

- 002°-012° byd 40 NM blo 19,000'
- 013°-022° byd 40 NM blo 10,300'
- 013°-022° byd 53 NM
- 023°-045° byd 40 NM
- 079°-113° byd 40 NM
- 114°-124° byd 40 NM blo 10,000'
- 114°-124° byd 52 NM
- 125°-145° byd 40 NM
- 153°-172° byd 40 NM blo 15,000'
- 153°-172° byd 52 NM blo 18,000'
- 173°-186° byd 40 NM
- 187°-197° byd 40 NM blo 15,000'
- 187°-197° byd 66 NM
- 198°-212° byd 40 NM
- 200°-230° byd 30 NM blo 13,000'
- 213°-223° byd 40 NM blo 18,000'
- 224°-304° byd 40 NM
- 327°-339° byd 40 NM blo 18,000'
- 356°-001° byd 40 NM

TACAN AZIMUTH unusable:

- 200°-230° byd 30 NM blo 13,000'

DME unusable:

- 200°-230° byd 30 NM blo 13,000'

ILS/DME 111.9 I-RTS Chan 56 Rwy 32. Class IT.

**RENO/TAHOE INTL (RNO)(KRNO) P (ANG) 3 SE UTC-8(-7DT) N39°29.95' W119°46.09'**

**SAN FRANCISCO**

4415 B TPA—See Remarks LRA Class I, ARFF Index C NOTAM FILE RNO

**H-3B, L-9A**

**RWY 17R-35L:** H11001X150 (CONC-GRVD) S-75, D-185, 2D-350,

**IAP, AD**

2D/2D2-850 PCN 88 R/B/W/T HIRL CL

**RWY 17R:** MALSR. PAPI(P4L)—GA 3.06° TCH 77'. RVR-T Thld dsplcd 1000'.

**RWY 35L:** MALSR. PAPI(P4L)—GA 3.54° TCH 72'. RVR-R Thld dsplcd 990'. Ground.

**RWY 17L-35R:** H9000X150 (CONC-GRVD) S-75, D-209, 2D-407,

2D/2D2-850 PCN 88 R/B/W/T HIRL CL

**RWY 17L:** REIL. PAPI(P4L)—GA 3.0° TCH 75'.

**RWY 35R:** REIL. PAPI(P4L)—GA 3.35° TCH 75'.

**RWY 08-26:** H6102X150 (CONC-GRVD) S-60, D-170, 2D-260

PCN 72 R/B/W/T MIRL

**RWY 08:** REIL. PAPI(P4L)—GA 3.2° TCH 48'. Pole.

**RWY 26:** REIL. PAPI(P4L)—GA 3.0° TCH 45'. Tree.

**RUNWAY DECLARED DISTANCE INFORMATION**

**RWY 08:** TORA-5854 TODA-5854 ASDA-6102 LDA-5854

**RWY 17L:** TORA-9000 TODA-9000 ASDA-9000 LDA-9000

**RWY 17R:** TORA-11001 TODA-11001 ASDA-11001 LDA-10001

**RWY 26:** TORA-6102 TODA-6102 ASDA-6102 LDA-6102

**RWY 35L:** TORA-11001 TODA-11001 ASDA-11001 LDA-10011

**RWY 35R:** TORA-9000 TODA-9000 ASDA-9000 LDA-9000

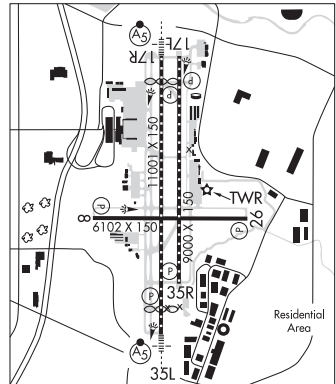
**SERVICE:** S4 **FUEL** 100LL, JET A1+ **OX** 1, 2, 3, 4 **MILITARY—FUEL** A, A+ (C775-858-7300.) (NC-100LL, A1+)

**NOISE:** Noise sensitive area all quadrants. All coml acft ctc gnd ctl for advisories prior to push back on the terminal ramp.

Pilots of turbojet acft use recommended NS ABTMT procedures, avbl on req. Pilots of non-turbojet acft use best abatement procedures and settings. Avoid as much as feasible flying over populated areas.

**AIRPORT REMARKS:** Attended continuously. Intsv glider activity invof arpt and surrounding areas up to 18000'. Waterfowl all quadrants all seasons. Concentrated NW of Rwy 17R and East of Rwy 17L. Twy M clsd to air carrier acft. Twy J east of Rwy 16L-34R clsd to air carrier acft. Twy A btn N Twy B and Twy D clsd to acft with wingspan greater than 149'. Twy C btn Twy L and Twy D rstrd to acft 100,000 lbs or less. Twy C btn Twy L and Twy D clsd to air carrier acft.

TPA—5215(800) sngl eng, 5415(1000) mult eng/turboprop/jet. Acft over 12500 lbs: written PPR for trng flights; for more info ctc arpt ops 1-775-328-6490. 24 hrs PPR for tran acft parking with wingspan greater than 75'. Ldg rights arpt, PPR-call 775-784-5585; aft hrs ldg wo prior apvl not authorized. Glider/soaring ops 30-50 miles South of arpt ctdr VFR wx and mountain wave wind cond 1900Z± to SS. ANG: COMSEC mtrl storage avbl with prior cdn at 152 CF/SCXS, DSN 830-4798. Flight Notification Service (ADCUS) avbl. NOTE: See Special Notices—Glider/Soaring Activities around the Reno-Tahoe Intl Arpt. See Special Notices—Arrival Alert.



CONTINUED ON NEXT PAGE