

CONTINUED FROM PRECEDING PAGE

AIRSPACE: CLASS D svc Mon 0600–Sat 0600Z exc hol, other times by NOTAM; other times CLASS G..

RADIO AIDS TO NAVIGATION: NOTAM FILE DUG.

DOUGLAS (VL) (H) VORTACW 108.8 DUG Chan 25 N31°28.36' W109°36.12' 268° 38.7 NM to fld. 4131/13E.

TACAN AZIMUTH unusable:

- 045°–065° byd 26 NM blo 10,000'
- 065°–095° byd 28 NM blo 9,500'
- 355°–010° byd 35 NM blo 11,300'

DME unusable:

- 045°–065° byd 26 NM blo 10,000'
- 065°–095° byd 28 NM blo 9,500'
- 355°–010° byd 35 NM blo 11,300'

VOR unusable:

- 046°–063° byd 40 NM blo 11,000'
- 046°–063° byd 49 NM blo 16,000'
- 046°–063° byd 63 NM
- 253°–263° byd 40 NM blo 16,000'
- 253°–263° byd 66 NM
- 264°–277° byd 40 NM
- 278°–288° byd 40 NM blo 16,000'
- 278°–288° byd 52 NM
- 305°–316° byd 40 NM
- 345°–045° byd 40 NM

LIBBY (T) (V) VORW/DME 113.6 FHU Chan 83 N31°35.38' W110°21.30' at fld. 4665/13E. NOTAM FILE FHU.

VOR unmonitored when GCA clsd.

Military use: No NOTAM MP 1200–1500Z 4th Thurs of month

VOR unusable:

- 110°–235° byd 10 NM

DME unusable:

- 110°–235° byd 10 NM

FORT HUACHUCA (T) TACAN Chan 53 ARH (111.6) N31°35.13' W110°20.34' at fld. 4660/12E. NOTAM FILE

FHU. unmonitored when twr clsd.

TACAN unusable:

- 105°–250° byd 10 NM
- 120°–300° byd 20 NM

Military use: No NOTAM MP 1200–1500Z 1st Thursday of month

ILS 109.9 I–FHU Rwy 26. Class I E. Unmonitored when GCA clsd. No NOTAM MP 1200–1500Z 3rd Thursday of Month.

COMM/NAV/WEATHER REMARKS: When ATCT clsd 121.5 mntd for emerg. USAF wx fcst avbl 1200–0300Z fm Davis Monthan AFB. See Term FLIP for Radar Minima.

.....

HELIPAD H1: H40X40 (ASPH) PERIMETER LGTS

HELIPORT REMARKS: ACTVT perimeter lgts Helipad H1—CTAF.

SPRINGERVILLE MUNI (JTC)(KJTC) 1 WSW UTC–7 N34°07.77' W109°18.65'

PHOENIX

7055 B NOTAM FILE PRC

H–4K, L–5D

RWY 03–21: H8422X75 (ASPH) S–30 MIRL

IAP

RWY 03: PAPI(P2L)—GA 4.0° TCH 46'. 0.4% down.

RWY 21: PAPI(P2L)—GA 3.0° TCH 35'. Rgt tfc. 0.6% up.

RWY 11–29: H4603X60 (ASPH) S–19 MIRL

RWY 11: PAPI(P2L)—GA 3.0° TCH 35'.

SERVICE: FUEL 100LL, JET A+ LGT Rwy 03 PAPI does not provide obstacle clearance 2 NM byd thld. ACTVT PAPI Rwy 03, Rwy 11 and Rwy 21; MIRL Rwy 03–21 and Rwy 11–29—CTAF: 5 clicks on; 7 clicks off.

AIRPORT REMARKS: Attended 1500–2300Z. Fuel: 100LL: Aft hr – 928–245–0151. Mil tfc invof arpt. Wildlife on and invof arpt. Density indcr at fuel pumps.

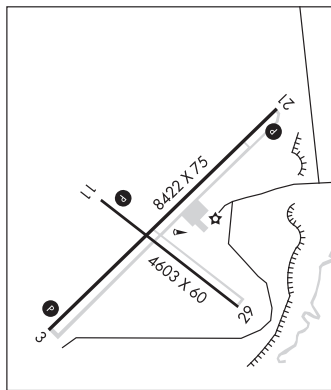
AIRPORT MANAGER: 928-333-5746

WEATHER DATA SOURCES: AWOS–3PT 119.65 (928) 333–5716.

COMMUNICATIONS: CTAF/UNICOM 122.8

Ⓡ ALBUQUERQUE CENTER APP/DEP CON 132.9

CLEARANCE DELIVERY PHONE: For CD ctc Albuquerque ARTCC at 505-856-4861.



CONTINUED ON NEXT PAGE

CONTINUED FROM PRECEDING PAGE

RADIO AIDS TO NAVIGATION: NOTAM FILE SJN.

ST JOHNS (VH) (H) VORTAC 112.3 SJN Chan 70 N34°25.44' W109°08.61' 193° 19.5 NM to fld. 6840/12E.

VOR unusable:

097°-108° byd 40 NM

109°-119° byd 40 NM blo 18,000'

120°-222° byd 40 NM

STANFIELD N32°53.15' W111°54.52' NOTAM FILE PRC.

(VH) (H) VORTAC 114.8 TFD Chan 95 048° 8.3 NM to Casa Grande Muni. 1316/12E.

VOR unusable:

034°-039° byd 40 NM

075°-088° byd 40 NM blo 9,000'

075°-088° byd 47 NM

110°-122° byd 40 NM

127°-134° byd 40 NM

160°-278° byd 40 NM

279°-289° byd 40 NM blo 18,000'

290°-315° byd 40 NM

RCO 122.1R 114.8T (PRESCOTT RADIO)

PHOENIX

H-4J, L-5B, A

STELLAR AIRPARK (See CHANDLER on page 40)

SUN VALLEY (See BULLHEAD CITY on page 38)

SUPERIOR MUNI (E81) 2 SW UTC-7 N33°16.67' W111°07.62'

2646 NOTAM FILE PRC

RWY 04-22: 3250X75 (GRVL)

RWY 04: Tree.

AIRPORT REMARKS: Unattended. Emerg-520-689-5254 police. Gate code 2646. Lndg uphill to NE rcmd. Rwy 04-22 E 2000 ft excellent, W 1000 ft fair. Rwy 04-22 12 ft brush and trees 75 ft fm cntrln both sides; mainly 1000 ft W. Rwy 04 4375 ft MSL mountain located 9000 ft W. Livestock on arpt. Rwy 22 NSTD markings, painted rubber tires. Terrain NE; mts and hills SSW-SW.

AIRPORT MANAGER: 520-689-5752

COMMUNICATIONS: CTAF/UNICOM 122.7

CLEARANCE DELIVERY PHONE: For CD ctc Albuquerque ARTCC at 505-856-4861.

PHOENIX

TAYLOR (TYL)(KTYL) 2 SW UTC-7 N34°27.16' W110°06.90'

5823 B NOTAM FILE PRC

RWY 03-21: H7001X75 (ASPH) MIRL 1.5% up SW

RWY 03: REIL. PAPI(P2L)—GA 4.0° TCH 49'.

RWY 21: REIL. PAPI(P2L)—GA 3.0° TCH 43'.

SERVICE: S4 FUEL 100LL LGT ACTVT REIL Rwy 03 and Rwy 21; PAPI Rwy 03 and Rwy 21; MIRL Rwy 03-21—CTAF.

AIRPORT REMARKS: Attended Mon-Fri 1430-0000Z. Fuel: 100LL: Self svc H24 with credit card. Wildlife on or invof arpt. Nmrs rwy hold and exit signs OTS indef. Rwy 03-21 4-9 ft trees and brush in prim sfc NW side of rwy 100-250 ft fm cntrln.

AIRPORT MANAGER: 928-606-9779

WEATHER DATA SOURCES: AWOS-3PT 119.075 (928) 387-2084.

COMMUNICATIONS: CTAF/UNICOM 122.7

Ⓡ ALBUQUERQUE CENTER APP/DEP CON 132.9

CLEARANCE DELIVERY PHONE: For CD ctc Albuquerque ARTCC at 505-856-4861.

RADIO AIDS TO NAVIGATION: NOTAM FILE SJN.

ST JOHNS (VH) (H) VORTAC 112.3 SJN Chan 70 N34°25.44'

W109°08.61' 260° 48.2 NM to fld. 6840/12E.

VOR unusable:

097°-108° byd 40 NM

109°-119° byd 40 NM blo 18,000'

120°-222° byd 40 NM

PHOENIX

H-4K, L-8G

IAP

