

CHENA RIVER SPB (Z25) 3 W UTC-9(-8DT) N64°49.97' W147°50.90'

FAIRBANKS

440 TPA—1000(560) NOTAM FILE FAI

WATERWAY N-S: 5000X300 (WATER)

WATERWAY E-W: 3000X300 (WATER)

SEAPLANE REMARKS: Unattended. Operating area in Chena River north and west of Fairbanks Intl arpt. PVT 900' X 50' grass strip adjacent river. All property along river bank is privately owned. Public access to river consists of one small gravel ramp. Public access ramp is at north end of Ravenwood Ave. N64-49.9' W147-52.5'

COMMUNICATIONS: CTAF 122.9

COMM/NAV/WEATHER REMARKS: For a toll free call to Fairbanks FSS dial 1-866-248-6516, for local call to Fairbanks FSS dial 907-474-0137.

FAIRBANKS INTL (FAI)(PAFA) 3 SW UTC-9(-8DT) N64°48.92' W147°51.40'

FAIRBANKS

439 B LRA Class I, ARFF Index C NOTAM FILE FAI

H-1B, 2K, L-3A, 3D, 4J

RWY 02L-20R: H11800X150 (ASPH-GRVD) S-75, D-220, 2D-580,

IAF, DIAP, AD

2D/2D2-1100 PCN 78 F/A/W/T HIRL CL

RWY 02L: ALSF2. TDZL. PAPI(P4L)—GA 3.0° TCH 73'. RVR-TMR Thld dsplcd 750'. Tree.

RWY 20R: MALSR. PAPI(P4L)—GA 3.0° TCH 74'. RVR-TMR Thld dsplcd 750'. Tree.

RWY 02R-20L: H4510X75 (ASPH) MIRL

RWY 02R: PAPI(P4L)—GA 3.0° TCH 40'. Trees. Rgt tfc.

RWY 20L: REIL. PAPI(P4L)—GA 3.0° TCH 42'.

RWY 02-20: 2900X75 (GRVL)

RUNWAY DECLARED DISTANCE INFORMATION

RWY 02L:TORA-11800 TODA-12800 ASDA-11800 LDA-11050

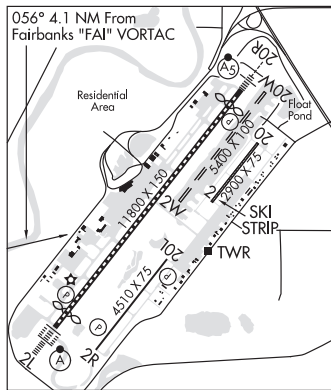
RWY 20R:TORA-11800 TODA-12800 ASDA-11800 LDA-11050

SERVICE: S4 FUEL 100LL, JET A1 OX 1, 2 LGT Rwy 20R PAPI unusable byd 8° right of centerline.

NOISE: Noise abatement procedures in effect fm 0700-1700Z† all large acft, turbine engine, and heavy acft utilize Rwy 02L for arrivals and Rwy 20R for departures when wind is not an opr factor. Ctc arpt ops for engine run-up locations.

AIRPORT REMARKS: Attended continuously. See additional pages under

notices for TRSA and Fairbanks area information. N/S twy (Twy A) is west and parallel to Rwy 02L-20R. Be alert to avoid ldg on twy. Transient parking east ramp for acft with wingspan less than 79 ft. No transient acft parking on west ramp, ctc arpt ops 907-451-2300 for info and Medivac parking. Be alert for snow removal equipment ops from 1 Oct to 15 May. Migratory birds in vicinity of arpt during Spring thru Fall. For avblty of summer gravel strip Rwy 02-20 and winter ski strip Rwy 02-20 consult local NOTAMS and ctc twr prior to arrival/departure. For transient helicopter parking call arpt ops 907-451-2300. Tfc pat alt (single engine reciprocating acft) 1500' MSL. Tfc pat alt (all multi-engine, large and turbine-powered acft) 2000' MSL. Cold temperature airport. Altitude correction required at or below -29C. All rwy hold lines obscured October 1 thru April 1. Rwy 02R-20L is limited for use by acft design Group B II, acft or smaller. Rwy 02R-20L & Rwy grvl/ski 02-20 not avbl for scheduled or unscheduled acr opns with more than 30 psgr seats. Rwy 02-20 gravel strip for summer and ski strip/winter use. PPR for mil acft utilizing heavy cargo or trml aprn, ctc arpt ops. Twy B security gate between Rwy 02L-20R and Twy Charlie key 121.75 5 times to activate. If Twy B gate inoperative, wait 30 seconds to reset and try again. If unsuccessful, notify FAI ops, 907-451-2300. Compass rose not calibrated.



CONTINUED ON NEXT PAGE

CONTINUED FROM PRECEDING PAGE

AIRPORT MANAGER: 907-474-2500

WEATHER DATA SOURCES: ASOS 124.4 (907) 474-8036. (WX CAM)

COMMUNICATIONS: SFA ATIS 124.4 907-456-1244 (TIE-IN FSS FAIRBANKS FAI-NOTAM FAI)

RADIO 122.2 124.1 132.65 (E)

Ⓡ APP CON 125.35 363.2 (180°-359°) 127.1 251.1 (360°-179°) 119.85 (E)

TOWER 118.3 257.8 (E) GND CON 121.9 CLNC DEL 127.6

Ⓡ DEP CON 125.35 363.2 (180°-359°) 127.1 251.1 (360°-179°) 327.1 (E)

SUAIS (Eielson Range Control) 125.3.

CHENA NDB (HW) 257 CUN N64°50.32' W147°29.70' 245° 9.4 NM to fld. 462/17E.

ILS/DME 109.1 I-CNA Chan 28 Rwy 02L. Class IIIE. DME unusable byd 025° left of course.

ILS/DME 110.3 I-FAI Chan 40 Rwy 20R. Class IIE.

COMM/NAV/WEATHER REMARKS: For a toll free call to Fairbanks FSS dial 1-866-248-6516, for a local call to Fairbanks FSS dial (907) 474-0137. TACAN located N64°48.01' W148°00.81'. (Although colocated facilities antennae are at different positions). For flights in MOA's east of Fairbanks recommend contacting Eielson Range Control on 125.3/126.3 or call 1-800-758-8723 for information on military activities. NWS weather balloon launch site 2000 feet west of midfield Runway 02L-20R. Launches are twice daily at 1100 and 2300 UTC.

WATERWAY 02W-20W: 5400X100 (WATER)

WATERWAY 02W: Fence.

WATERWAY 20W: Fence.

SEAPLANE REMARKS: Waterlane is controlled; ctc ATCT on freq 118.3 for approval. Waterlane threshold buoys are 500 from N and S shores and mark waterlane. Step taxi prohibited outside of waterlane. East of waterlane is uncontrolled; aircraft may taxi in this area at pilot discretion. Recommend ctc clnc del as soon as practical after eng start. Sfc frozen in winter, not monitored. Limited transient float plane parking avbl ctc 907-455-4571. Migratory birds in the vicinity of arpt during Spring thru Fall.

----- GOLD KING CREEK (AK7)(PAAN) 39 SE UTC-9(-8DT) N64°11.88' W147°55.72' FAIRBANKS

1720 NOTAM FILE FAI

RWY 09-27: 2558X17 (GRVL-DIRT)

RWY 09: Trees.

RWY 27: Brush.

AIRPORT REMARKS: Unattended. Rwy condition not monitored, recommend visual inspection prior to landing. 20' trees on both sides of rwy within 60-70' of centerline. Rwy 09-27 rocks up to 6" on sfc. No services avbl.

AIRPORT MANAGER: (907) 451-5280

COMMUNICATIONS: CTAF 122.9

COMM/NAV/WEATHER REMARKS: For a toll free call to Fairbanks FSS dial 1-866-248-6516, for local call to Fairbanks FSS dial 907-474-0137.

----- LAKLOEY AIR PARK (AK22) PVT 6 E UTC-9(-8DT) N64°49.30' W147°31.30' FAIRBANKS

475 NOTAM FILE Not insp.

RWY 06-24: 4000X50 (GRVL)

RWY 06: Trees. Rgt tfc.

AIRPORT REMARKS: Unattended. Rwys not maintained or monitored, recommend visual inspection prior to using. No facilities. Unusable for wheels in the fall, winter, spring. PPR for transient acct, write to Lakloey Airpark, P.O. Box 58388, Fairbanks AK 99711.

AIRPORT MANAGER: 907-488-1724

COMMUNICATIONS: CTAF 125.0

COMM/NAV/WEATHER REMARKS: For a toll free call to Fairbanks FSS dial 1-866-248-6516, for local call to Fairbanks FSS dial 907-474-0137.

WATERWAY 06W-24W: 3400X100 (WATER)

WATERWAY 06W: Trees. Rgt tfc.