

CLEVELAND—HOPKINS INTL (CLE)(KCLE) 9 SW UTC-5(-4DT) N41°24.56' W81°51.28'

800 B AOE Class I, ARFF Index C NOTAM FILE CLE

RWY 06R-24L: H9953X150 (CONC-GRVD) S-100, D-185, 2S-175, 2D-340 PCN 63 R/B/W/T HIRL CL

RWY 06R: MALSR. TDZL. PAPI(P4L)—GA 3.0° TCH 73'. RVR-TMR Thld dspcd 1923'. Trees.

RWY 24L: MALSR. TDZL. PAPI(P4R)—GA 3.0° TCH 48'. RVR-TMR

RWY 06L-24R: H9000X150 (CONC-GRVD) S-75, D-200, 2S-175, 2D-400 PCN 78 R/B/W/T HIRL CL

RWY 06L: ALSF2. TDZL. PAPI(P4L)—GA 3.0° TCH 69'. RVR-TMR Trees.

RWY 24R: ALSF2. TDZL. PAPI(P4R)—GA 3.0° TCH 65'. RVR-TMR

RWY 10-28: H6018X150 (ASPH-CONC-GRVD) S-155, D-200, 2S-175, 2D-400 PCN 80 R/B/W/T HIRL 0.5% up E

RWY 10: REIL. PAPI(P4L)—GA 3.0° TCH 45'. RVR-R Tree.

RWY 28: MALSF. PAPI(P4R)—GA 3.0° TCH 45'. RVR-T Pole.

RUNWAY DECLARED DISTANCE INFORMATION

RWY 06L:TORA-9000 TODA-9000 ASDA-9000 LDA-9000

RWY 06R:TORA-9956 TODA-9956 ASDA-9956 LDA-8029

RWY 10: TORA-6018 TODA-6018 ASDA-6018 LDA-6018

RWY 24L:TORA-9956 TODA-9956 ASDA-9956 LDA-9956

RWY 24R:TORA-9000 TODA-9000 ASDA-9000 LDA-9000

RWY 28: TORA-6018 TODA-6018 ASDA-6018 LDA-6018

ARRESTING GEAR/SYSTEM

RWY 10: EMAS

RWY 28: EMAS

SERVICE: S4 **FUEL** 100LL, JET A1+ **OX** 1, 2, 3, 4 **LGT** PAPI unusbl byd 8° L&R of cntrl.

NOISE: All apchs are ovr noise sensitive areas. Arpt late ngt noise abatement procedures are in effect 0400-1100Z.

Additional noise abatement procedures are in effect call amgr normal business hrs at 216-265-6090.

AIRPORT REMARKS: Attended continuously. Deer, coyotes, & birds inclg waterfowl on & invof arpt. ASSC in use. Operate transponders with altitude reporting mode and ADS-B (if equipped) enabled on all airport surfaces. Twys clsd Oct-Apr to support deicing ops: Twy M; Twy J2; Twy M1 btn Twy L & Twy J1; Twy M2 btn Twy L & Twy J1. Txl H clsd to acft with wingspan ovr 171 ft. Pad 2 and Taxi lane Y1 rstd to Group II acft, less than 79' wingspan. Ramp area concourse D between gates D1, D28 clsd except acft wingspan less than 86'. Pad 3 bays 1-5 clsd to acft with wingspan over 134'. Pad 3 bay 6 clsd to acft with wingspan over 94'. Twy F clsd to acft with wingspan over 118'. NASA Glenn Research Center; NASA ramp PPR call 216-433-2031; Mon-Fri 1300-2230Z. Contact NASA ops on freq 122.925 within 50 NM. Ldg Fee. ADCUS avbl dly 1200-0000Z, ltd avblty durg off hrs; all reqs for svc must be made with US Cust Svc ofc lctd at gate A-14 call 216-267-3600 durg listed hrs.

AIRPORT MANAGER: 216-265-6963

WEATHER DATA SOURCES: ASOS (216) 416-2729 TDWR.

COMMUNICATIONS: D-ATIS ARR 127.85 D-ATIS DEP 132.375 UNICOM 122.95

RCO 122.3 (CLEVELAND RADIO)

Ⓡ APP CON 126.55

Ⓡ DEP CON 128.25 135.875

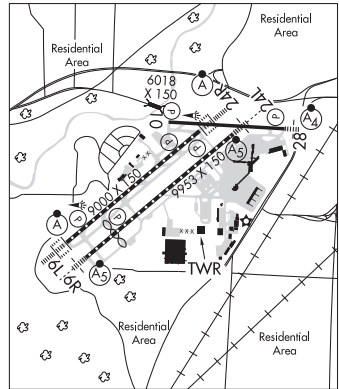
TOWER 124.5

GND CON 121.7 CLNC DEL 125.05

CPDLC (LOGON KUSA)

PDC

AIRSPACE: CLASS B See VFR Terminal Area Chart.



DETROIT
H-10G, L-30G
IAP, AD

CONTINUED ON NEXT PAGE

CONTINUED FROM PRECEDING PAGE

VOR TEST FACILITY (VOT) 110.4

RADIO AIDS TO NAVIGATION: NOTAM FILE CLE.

DRYER (VH) (DH) VOR/DME 113.6 DJB Chan 83 N41°21.48' W82°09.72' 082° 14.2 NM to fld. 780/5W.

VOR unusable:

001°-010° byd 40 NM
 020°-024° byd 40 NM
 034°-040° byd 55 NM
 080°-095° byd 40 NM
 110°-120° byd 40 NM
 135°-145° byd 40 NM
 135°-150°
 155°-165°
 160°-165° byd 40 NM
 185°-195° byd 40 NM
 187°-197°
 210°-224° byd 40 NM
 211°-218°
 225°-235° byd 40 NM blo 11,000'
 225°-235° byd 95 NM
 225°-245° byd 20 NM blo 3,500'
 245°-265° byd 40 NM
 275°-285° byd 40 NM blo 18,000'
 286°-355° byd 40 NM

DME unusable:

187°-197°
 289°-310°
 322°-332°
 350°-060°

ILS/DME 111.55 I-LIZ Chan 52(Y) Rwy 06L. Class IIIE.

ILS/DME 111.9 I-CLE Chan 56 Rwy 06R. Class IIE.

ILS/DME 109.9 I-HPI Chan 36 Rwy 24L. Class IIE. LOC unusable byd 20° left of course.

ILS/DME 111.55 I-PVY Chan 52(Y) Rwy 24R. Class IIIE.

ILS/DME 110.7 I-PXP Chan 44 Rwy 28. Class IE.

COMM/NAV/WEATHER REMARKS: Freq 121.5 not avbl at FSS.

CUYAHOGA CO (CGF)(KCGF) 10 E UTC-5(-4DT) N41°33.88' W81°29.23'

876 B NOTAM FILE CGF

RWY 06-24: H5502X100 (ASPH-GRVD) S-90, D-123, 2D-213

PCN 35 F/C/X/U HIRL

RWY 06: REIL. PAPI(P4L)—GA 3.0° TCH 45'. Thld dsplcd 318'. Tree.

RWY 24: MALSR. PAPI(P4L)—GA 3.0° TCH 45'. Thld dsplcd 500'. Road.

RUNWAY DECLARED DISTANCE INFORMATION

RWY 06: TORA-5502 TODA-5502 ASDA-5502 LDA-5184

RWY 24: TORA-5502 TODA-5502 ASDA-5502 LDA-5000

ARRESTING GEAR/SYSTEM

RWY 06: EMAS

RWY 24: EMAS

SERVICE: S4 FUEL 100LL, JET A, A+ OX3 LGT When ATCT clsd
 actvt MALSR Rwy 24; REIL Rwy 06; PAPI Rwy 06, HIRL Rwy 06-24;
 windsocks—CTAF. PAPI Rwy 24 opr consly.

NOISE: Noise abatement procs in effect call arpt.

AIRPORT REMARKS: Attended 1100-0400Z†. For aft hrs svc call
 216-261-8800 drg atndd hrs. Birds & wildlife on & invof arpt. Flt trg
 prohibited 0400-1200Z†. ATCT vis SW ltd wi 500 ft AER Rwy 06.

AIRPORT MANAGER: 216-289-4111

WEATHER DATA SOURCES: AWOS-3PT (216) 289-4113

COMMUNICATIONS: CTAF 118.5 D-ATIS 119.95 (216)-289-4113

® CLEVELAND APP/DEP CON 125.35

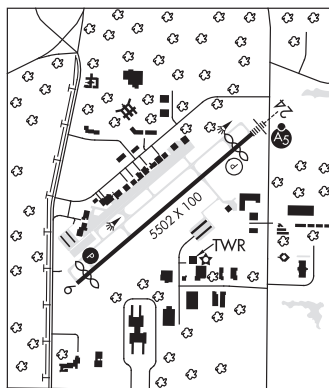
COUNTY TOWER 118.5 (1200-0400Z†) GND CON 121.85 CLNC DEL 121.85 (When twr clsd)

CLEARANCE DELIVERY PHONE: For CD when ATCT clsd ctc Cleveland Apch at 216-352-2323.

DETROIT

H-10G, L-30G

IAP, AD



CONTINUED ON NEXT PAGE