

TULSA INTL (TUL)(KTUL) P (ANG ARNG) 5 NE UTC-6(-5DT) N36°11.90' W95°53.29'

678 B LRA Class I, ARFF Index C NOTAM FILE TUL

RWY 18L-36R: H10000X150 (CONC-GRVD) S-75, D-200, 2S-175, 2D-400 PCR 1175 R/C/W/T HIRL CL

RWY 18L: MALSR. PAPI(P4L)—GA 2.75° TCH 56'. RVR-TMR Tree. 0.4% up.

RWY 36R: ALSF2. TDZL. PAPI(P4L)—GA 3.0° TCH 52'. RVR-TMR Tree. Rgt tfc.

RWY 08-26: H7376X150 (CONC-GRVD) S-75, D-200, 2S-175, 2D-350 PCR 626 R/B/W/T HIRL 0.5% up W

RWY 08: REIL. PAPI(P4L)—GA 3.0° TCH 52'. Tree.

RWY 26: MALSR. PAPI(P4L)—GA 3.0° TCH 57'.

RWY 18R-36L: H6101X100 (ASPH-GRVD) S-100, D-140, 2S-127 PCR 427 F/D/X/T HIRL 0.7% up S

RWY 18R: REIL. PAPI(P4L)—GA 2.75° TCH 42'. Thld dspcd 600'. Tree. Rgt tfc.

RWY 36L: REIL. PAPI(P4L)—GA 3.0° TCH 45'. Road.

RUNWAY DECLARED DISTANCE INFORMATION

RWY 08: TORA-7376 TODA-7376 ASDA-7376 LDA-7376

RWY 18L: TORA-10000 TODA-10000 ASDA-10000 LDA-10000

RWY 18R: TORA-6101 TODA-6101 ASDA-5701 LDA-5101

RWY 26: TORA-7376 TODA-7376 ASDA-7376 LDA-7376

RWY 36L: TORA-6101 TODA-6101 ASDA-5101 LDA-5101

RWY 36R: TORA-10000 TODA-10000 ASDA-10000 LDA-10000

ARRESTING GEAR/SYSTEM

RWY 18L BAK-14 BAK-12A(B) (1500 FT).

BAK-14 BAK-12A(B) (1500 FT). **RWY 36R**

RWY 08 BAK-14 BAK-12A(B) (1500 FT).

BAK-14 BAK-12A(B) (1500 FT). **RWY 26**

SERVICE: S4 FUEL 100LL, JET A OX 1, 2, 3, 4 LGT Rwy 08 PAPI unusbl byd 8 deg left & right of rwy cntrln. Rwy 26 PAPI unusbl byd 7 degs right & 9 degs left of cntrln. **MILITARY— A-GEAR** BAK-12A(B) raised by BAK-14 device O/R to twr. **JASU** 2(A/M32A-86) 3(MD-3M) 3(MA-1A) 4(AM32A-60A) 6(AM32A-60B) **FUEL** A, A+ (C918-836-6592, 1000-0600Z‡. OT 1 hr PN, \$100 fee.) (NC-100LL, A1, B) **FLUID** SP PRESAIR LPOX LOX OIL O-128-148; SOAP-Avbl dur ANG opr hr.

NOISE: Noise abatement all rwys; climb to 3000' asap aft tkof.

AIRPORT REMARKS: Attended continuously. Birds on and invof arpt.. Ctn: 4000 ft blacktop track 1.5 NM E Rwy 26; do not mistake for rwy. Rwy 18R ireg wind pat. Twy L south of Twy L3 not vsb to ATCT. Txl LA, NN, and QQ not vsb fm ATCT. Txl LB not vsb to ATCT. Twy L north of Rwy 08-26 S-93/D-140/DT209. Twy M-2 S-81/D-140/DT186. Wt rstrd areas: Twy JJ S-35; Twy M2 S-81/D-140/DT-186; Twy HH S-55/D-60; Twy L north of Rwy 08-26 S-93/D-140/DT209; Twy L btn Twy C & Twy L2 S-120/D-250/DT-372; Twy L2 S-70/D-100/DT-166. Apvd acct run up area: 0500-1200Z‡ N end Twy J acct orientation N & S. 24 hr apch end Rwy 26 acct orientation E & W. 1200-0500Z‡ N end Twy L acct orientation N and S.

AIRPORT MANAGER: 918-838-5000

WEATHER DATA SOURCES: ASOS (918) 831-6772 LLWAS. TDWR.

COMMUNICATIONS: UNICOM 122.95 D-ATIS 124.9 377.2 (918-831-6718) PTD 260.4

RCO 122.2 (MC ALESTER RADIO)

Ⓡ **APP/DEP CON** 119.1 (355°-174°) (FINAL 119.85 355°-174°) 124.0 (175°-354°) (FINAL 132.1 175°-354°)

TOWER 121.2 310.8 (Rwy 18L-36R and Rwy 08-26) 118.7 257.8 (Rwy 18R-36L) **GND CON** 121.9 348.6

CLNC DEL PRE-TAXI CLNC 134.05 284.7 **ARNG OPS** 46.9 **ANG OPS** 335.47

PDC

AIRSPACE: CLASS C svc ctc APP CON.

VOR TEST FACILITY (VOT) 109.0

RADIO AIDS TO NAVIGATION: NOTAM FILE TUL.

(H) (H) **VORTACW** 114.4 TUL Chan 91 N36°11.78' W95°47.29' 264° 4.9 NM to fld. 788/8E.

TACAN AZIMUTH unusable:

248°-258° byd 23 NM blo 3,100'

DME unusable:

248°-258° byd 23 NM blo 3,100'

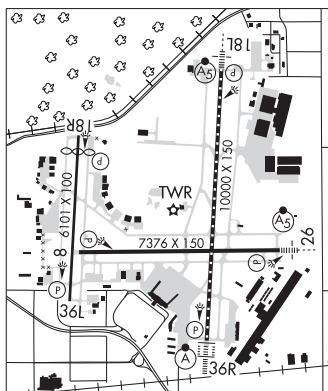
OILLR NDB (LOMW) 338 TU N36°05.85' W95°53.33' 357° 6.0 NM to fld. 710/3E.

ILS/DME 109.7 I-DWE Chan 34 Rwy 18L. Class IE. Autopilot coupled apchs NA blw 813' MSL. 813' MSL is blw the Cat I DH.

ILS 111.1 I-TJY Rwy 18R. Class IA.

ILS/DME 110.3 I-TUL Chan 40 Rwy 36R. Class IIE. LOM OILLR NDB.

ASR



KANSAS CITY

H-61, L-15E

IAP, AD