

**LADD AAF** (FBK)(PAFB) A 2 E UTC-9(-8DT) N64°50.26' W147°36.87'

449 B TPA—See Remarks NOTAM FILE PAFB

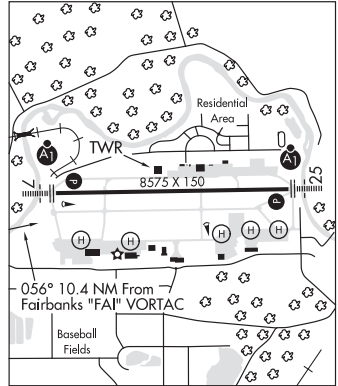
**RWY 07-25:** H8575X150 (ASPH-CONC) D-38 HIRL

**RWY 07:** ALSF1. REIL. PAPI(P4L)—GA 3.0° TCH 67'. Trees road. Rgt tfc.

**RWY 25:** ALSF1. REIL. PAPI(P4L)—GA 3.3° TCH 67'. Trees/road.

**SERVICE: FUEL**, J8 **LGT** When twr clsd ACTVT afld lgts—CTAF. Rwy 25 PAPI not coincident with PAR. Rwy 07-25 apch lgts nstd. PAPI maint the last Wed of the month 0900-1200/1800Z-2100Z. PAPI NA during this time.

**MILITARY REMARKS:** Opr Mon-Fri 1700-0800Z. CTN: Lgtd hwy part to and N of Rwy 07-25 can be confused with rwy. CAUTION: Road apch end of Rwy 07 and Rwy 25. No ovns. Bird act invof arpt. ALERT: Nmrs night device acft ops invof Ladd AAF; exp nmrs dimly lit acft in Tannana Flats and Yukon trng areas durg hr of darkness and wkday Sep-Apr. Unlgtd twr 150' AGL 1/2 NM North of arpt. CTN: 100 ft mkd lgt pole 3/4 NM SE. North tfc pat R/W and MQ-1 gray eagle only; Lrg acft—ramp prkg; small acft tie down not avbl. De-ice svcs not avbl. TPA R/W 1200 ft, F/W Piston 1500 ft, F/W Turbine 2000 ft. Firing ranges S of fld for adzy ctc ATCT or ops. Range Control freq 38.30. Med evac pad for F/W at ops ramp, R/W evac pad at hospital, 15 min notice rqrd. 24 hr PPR for tsnt—D317-353-7212/6514/C907-353-7212/6514. Twys A, B, C, D, E, F, G sections of N and S do not have shoulders. Rwy 07-25 seasonal climatic cond effects weight brg capacity. All hop day VMC only. Special VFR minimum Day—R/W 300-1/2, F/W 500-1. Night—R/W 500-1, F/W N/A. GCA 121.3, 118.05, 276.4 (Mon-Fri 1700-0100Z exc hol). PCN (Jun-Feb) 130/F/A/W/T. PCN (Mar-May) 112/F/D/W/T. US customs and intl trash not avbl. Rapid hot refueling points ops clsd Sat, Sun, hol; otr times by NOTAM. Avn units ctc their for cold fuel. Edge lgts Twy H and ptns of Twy N and S greater than 10 ft fm twy side stripes. CTN: Unlgt twrs in Alpha sod cntr inop. Rwy 07 actv railroad 556 ft fm DER runs thru clear zone perpendicular to cntrln; when railroad actv ATCT will advise lndg and dep NA. 15 ft road 387 ft E of DER 349 ft fm DER runs thru clear zone perpendicular to extdd cntrln; river 556 ft fm DER runs thru clear zone perpendicular to extdd cntrln. Rwy 25 15 ft road 349 ft W of DER; 23 ft railroad tracks 556 ft W of DER; 25 ft trees 556 ft W of DER. Road 387 ft fm DER runs thru clear zone perpendicular to extdd cntrln; river 477 ft fm DER runs thru clear zone perpendicular to extdd cntrln. Road tfc is ctd by ATCT when opn.



**AIRPORT MANAGER:** 907-353-7022

**COMMUNICATIONS: CTAF** 125.0 **ATIS** 134.25 907-353-5233 (TIE-IN FSS FAIRBANKS FAI-DL-NOTAM PAFB)

**FAIRBANKS RADIO** 122.2 (E) 122.6

④ **FAIRBANKS APP CON** 125.35 363.2 (180°-359°) 127.1 251.1 (360°-179°) (E)

**TOWER** 40.80 FM 125.0 (E) 284.6 Class D svc (1700-0800Z Mon-Fri exc hols; otr times by NOTAM; otr times Class G)

**GND CON** 121.7 263.15

④ **FAIRBANKS DEP CON** 125.35 363.2 327.1

**BASE OPS** 139.3 (Mon-Fri 1700-0200Z)

**PMSV METRO** 142.1381.375

**AIRSPACE: CLASS D** svc 1700-0800Z Mon-Fri exc hols; otr times by NOTAM; otr times CLASS G.

**RADIO AIDS TO NAVIGATION:** NOTAM FILE FAI.

**FAIRBANKS (H) (H) VORTACW** 108.6 FAI Chan 23 N64°48.00' W148°00.72' 056° 10.4 NM to fld. 1526/21E.

**TACAN AZIMUTH** unusable:

065°-100° byd 30 NM

270°-330° byd 10 NM blo 10,000'

270°-330° byd 30 NM

**CHENA NDB (HW)** 257 CUN N64°50.32' W147°29.70' 252° 3.1 NM to fld. 462/17E.

**ASR/PAR**

**COMM/NAV/WEATHER REMARKS:** ASOS 119.275 assocd with R-2205 Yukon Training Range. ASOS freq 118.525 is assocd with R-2211 Blair Lake Training Range. PMSV lmted to line of sight; reception blw 5000 ft MSL lmted fm 210°-100° wi 100 NM by trnn, no lmt abv 5,000 ft wi 50 NM; reception 3,500-12,000 ft lmted fm 100°-210° fm 50-100 NM by trnn, no lmt abv 12,000 ft wi 100 NM. PMSV unmonitored when FBK twr clsd. Sfc vis restricted fm 020°-050° due to Hangar 1 and fm 250°-350° due to ctl twr and bldgs. PMSV Metro 142.1 or 381.375. Wx Mon-Sat 0900Z-0900Z, exc hol—D317-353-7111/C907-353-7111S; aft hr 15th OWS Scott AFB, IL—D312-576-9755/9702/C618-256-9755/9702 or by NOTAM. Metwathc and medevac emerg Aft hr—(907) 382-6518. Durg wx station evac (907) 382-6518. Mins based on FBK wx obs.

**HELIPAD H1:** H50X50 (ASPH-CONC)

**HELIPAD H4:** H50X50 (ASPH-CONC)

**HELIPAD H5:** H50X50 (ASPH-CONC)

**HELIPAD H6:** H50X50 (ASPH-CONC)

**HELIPAD H7:** H50X50 (ASPH-CONC)

**HELIPORT REMARKS:** H1 designated: Helipad S.