

VALDEZ PIONEER FLD (VDZ)(PAVD) 3 E UTC-9(-8DT) N61°08.05' W146°14.69'

ANCHORAGE
H-1B, L-1A, 3E, 4H
IAF

128 B LRA ARFF Index—See Remarks NOTAM FILE VDZ
RWY 06-24: H6500X150 (ASPH-GRVD) S-107, D-187, 2D-346
 PCR 407 F/AX/T HIRL 1.1% up E
RWY 06: MALSR. PAPI(P4L)—GA 3.0° TCH 29'. Trees. Rgt tfc.
RWY 24: REIL. Trees.

RUNWAY DECLARED DISTANCE INFORMATION

RWY 06: TORA-6500 TODA-6500 ASDA-6500 LDA-6500
RWY 24: TORA-6500 TODA-6500 ASDA-6500 LDA-6500

SERVICE: S2 **FUEL** 100LL, JET A **LGT ACTVT** MALSR Rwy 06; REIL Rwy 24; PAPI Rwy 06; HIRL Rwy 06-24—CTAF.

AIRPORT REMARKS: Attended Mon-Fri 1500-0330Z, Sat-Sun 1700-0330Z. Fuel A: PPR - 907-834-6933. Maint hrs Mon-Fri 1500-0330Z; Sat-Sun 1700-0330Z. Cold temperature airport. Altitude correction required at or below -11C. Alert: durg strong N wind; midfld and E end rwy wind may be much hydr than AWOS indcd. Class I, ARFF Index: clsd to acr ops more than 30 pax seats exc 24 hr PPR in writing-AMGR PO Box 507 Valdez, AK 99686; FAX 907-835-5849. Arprt sand lgr than FAA rcmd/see AC 150/5200-30. 1675 x 200 ft SW ptn of ramp not mntnd Nov 1 to Apr 15. Alert: See Special Notices—Port Valdez Area.

AIRPORT MANAGER: 907-835-5658

WEATHER DATA SOURCES: AWOS-3P 118.8 (907) 835-5578. (WX CAM)

COMMUNICATIONS: CTAF 122.9

RCO 122.2 (JUNEAU RADIO)

ANCHORAGE CENTER APP/DEP CON 119.3 269.4

RADIO AIDS TO NAVIGATION: NOTAM FILE VDZ.

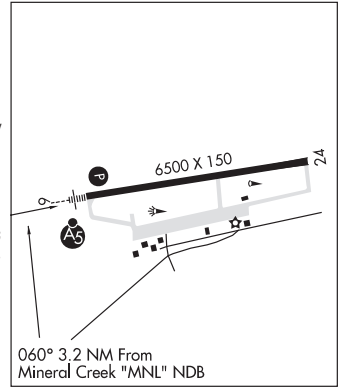
MINERAL CREEK NDB (MHW) 524 MNL N61°07.45' W146°21.13' 060° 3.2 NM to fld. 21/19E.

NDB unusable:

320°-010° byd 15 NM

LDA/DME 109.5 I-VDZ Chan 32 Rwy 06. LOC unusable byd 10° left of course; unusable byd 25° rgt of course; byd 11.2 NM blw 4,635'. DME unusable byd 10° left of course; unusable byd 25° rgt of course; byd 11.2 NM blw 4,635'.

COMM/NAV/WEATHER REMARKS: For a toll free call to Juneau FSS dial 1-866-297-2236.



VALLEY FLYING CROWN (See WASILLA on page 262)

VENETIE (VEE)(PAVE) 1 E UTC-9(-8DT) N67°00.52' W146°21.98'

FAIRBANKS
H-1B, L-4J
IAF

574 B NOTAM FILE FAI
RWY 04-22: 4000X75 (GRVL) MIRL
RWY 04: Road.
RWY 22: Trees.

SERVICE: LGT ACTIVATE MIRL Rwy 04-22 and rot bcn—CTAF. Rotating bcn OTS indef. Twy lgts OTS indef.

AIRPORT REMARKS: Unattended. Maint in winter variable. Rwy 04-22 sfc slippery when wet, sfc uneven and sparsely graveled. Rwy 04 road transits rwy approximately 300' from thld. PPR before landing phone 907-849-8165. Construction equipment and persons operating on and infov rwy.

AIRPORT MANAGER: 907-849-8165

COMMUNICATIONS: CTAF 122.9

Ⓡ **ANCHORAGE CENTER APP/DEP CON** 135.0

RADIO AIDS TO NAVIGATION: NOTAM FILE FYU.

FORT YUKON (H) (H) VORTACW 114.4 FYU Chan 91 N66°34.46' W145°16.60' 296° 36.8 NM to fld. 449/20E.

VOR unusable:

001°-360° byd 15 NM

249°-259° byd 10 NM blo 4,900'

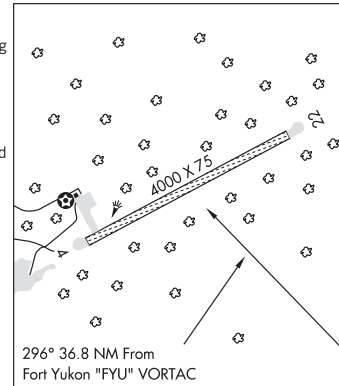
TACAN AZIMUTH unusable:

280°-300° byd 35 NM blo 2,500'

DME unusable:

280°-300° byd 35 NM blo 2,500'

COMM/NAV/WEATHER REMARKS: For a toll free call to Fairbanks FSS dial 1-866-248-6516.



VISNAW LAKE SPB (See WASILLA on page 262)