

WHITE MOUNTAIN (WMO)(PAWM) 1 N UTC-9(-8DT) N64°41.35' W163°24.77'

NOME

267 B NOTAM FILE WMO

L-3A, 3C, 4H

RWY 15-33: 3000X60 (GRVL) MIRL 1.5% up SE

RWY 15: Brush.

RWY 33: Brush.

IAF

SERVICE: LGT ACTIVATE MIRL Rwy 15-33—CTAF.**AIRPORT REMARKS:** Unattended. Rwy condition not monitored, recommend visual inspection prior to ldg. Rwy 15-33 slopes down at Rwy 33 thld NW to SE, south end is 45' higher. Rwy 15-33 NSTD markings, marked with cones and reflective thld panels. Turbulence on Rwy 33 approach. Tall brush around wind sock.**AIRPORT MANAGER:** 907-443-2500**WEATHER DATA SOURCES:** AWOS-3P 121.45 (907) 638-2103. (WX CAM)**COMMUNICATIONS:** CTAF 122.9

GOLOVIN RCO 122.05 (NOME RADIO)

ANCHORAGE CENTER APP/DEP CON 290.4 133.3

RADIO AIDS TO NAVIGATION: NOTAM FILE OME.

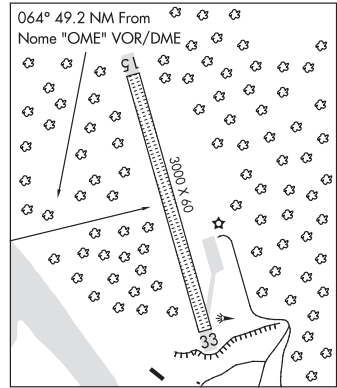
NOME (H) (H) VORW/DME 115.0 OME Chan 97 N64°29.11'

W165°15.19' 064° 49.2 NM to fld. 95/11E.

COMM/NAV/WEATHER REMARKS: For a toll free call to Nome FSS dial

1-800-478-8400. For a toll free call to Fairbanks FSS dial

1-866-248-6516.

**WHITTIER** (IEM)(PAWR) 1 NW UTC-9(-8DT) N60°46.63' W148°43.18'

ANCHORAGE

39 NOTAM FILE ENA

RWY 04-22: 1480X60 (GRVL) 1.4% up SW

RWY 04: Road.

RWY 22: Brush.

AIRPORT REMARKS: Unattended. Rwy condition not monitored, recommend visual inspection prior to ldg. No scheduled maint., no winter maint., clsd from first snowfall till after breakup. Birds on and invof arpt. Apch to Rwy 22 over water, distance from water to thld panels 205'. For txf use Rwy 04 only first 130' of Rwy 04 unusable. Pile of large rocks lctd apch end Rwy 04. For ldgs use Rwy 22 only, go around unlikely. Wind indicator may be unreliable. Rwy 22 slopes up 2% from water. 30' trees, 45' each side of rwy cntrln, full length.**AIRPORT MANAGER:** 907-783-2232**COMMUNICATIONS:** CTAF 122.9**RADIO AIDS TO NAVIGATION:** NOTAM FILE ANC.

ANCHORAGE (H) (H) VORW/DME 113.15 TED Chan 78(Y)

N61°10.07' W149°57.61' 104° 43.2 NM to fld. 92/18E.

VOR unusable:

041°-091° byd 25 NM blo 15,000'

091°-096° byd 20 NM blo 15,000'

096°-121° byd 25 NM blo 12,500'

121°-146° byd 25 NM blo 9,000'

DME unusable:

041°-091° byd 25 NM blo 15,000'

091°-096° byd 20 NM blo 15,000'

096°-121° byd 25 NM blo 12,500'

121°-146° byd 25 NM blo 9,000'

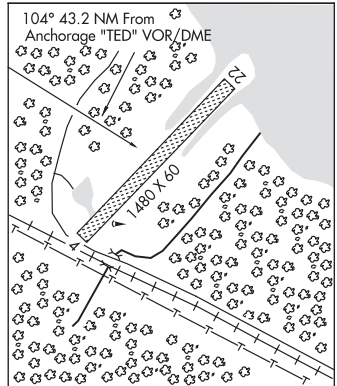
196°-206° byd 25 NM blo 3,500'

206°-211° byd 25 NM blo 4,000'

211°-221° byd 25 NM blo 3,500'

COMM/NAV/WEATHER REMARKS: For a toll free call to Kenai FSS dial 1-866-864-1737. When avbl hourly wx reports from

Portage Visitor Ctr 135.45, lctd west side of Portage Pass.

**WILDER RUNWAY** (See PORT ALSWORTH on page 203)**WILEY POST-WILL ROGERS MEML** (See UTQIAGVIK on page 255)**WILLIAMS MOUNTAIN** N58°09.13' W134°02.02'

RCO 122.55 (JUNEAU RADIO)

JUNEAU

H-1C, L-1B