

**CAPE SARICHEF** (26AK)(PACS) PVT O N UTC-9(-8DT) N54°34.95' W164°54.87'

DUTCH HARBOR

291 NOTAM FILE CDB Not insp.

L-21

**RWY 16-34:** 3500X120 (GRVL)

RWY 16: Rgt t/c.

**RWY 06-24:** 1900X90 (GRVL)

RWY 24: Mtn.

**AIRPORT REMARKS:** Unattended. Rwy not maintained, recommend visual inspection prior to using. Rwy 06-24 east 1100' of rwy closed and unusable.**AIRPORT MANAGER:** 907-532-2445**COMMUNICATIONS:** CTAF 122.9**RADIO AIDS TO NAVIGATION:** NOTAM FILE CDB.**COLD BAY (H) (H) VORTACW** 112.6 CDB Chan 73 N55°16.04' W162°46.44' 232° 84.8 NM to fld. 99/10E.

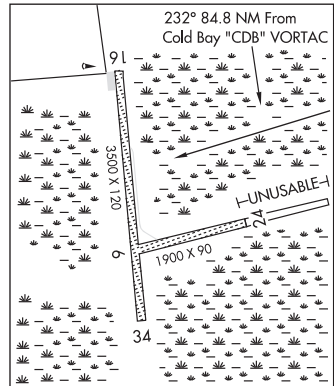
VOR unusable:

094°-129° byd 30 NM blo 9,000'  
164°-199° byd 20 NM blo 14,000'  
164°-199° byd 35 NM  
349°-009° blo 10,000'  
349°-009° byd 15 NM

TACAN AZIMUTH unusable:

094°-129° byd 30 NM blo 9,000'  
164°-199° byd 20 NM blo 14,000'  
164°-199° byd 35 NM  
269°-279° byd 20 NM

DME unusable:

094°-129° byd 30 NM blo 9,000'  
164°-199° byd 20 NM blo 14,000'  
164°-199° byd 35 NM  
269°-279° byd 20 NM**COMM/NAV/WEATHER REMARKS:** For a toll free call to Cold Bay FSS dial 1-800-478-7250. For a toll free call to Kenai FSS dial 1-866-864-1737.**CAPE SPENCER** N58°11.98' W136°38.41'

JUNEAU

RCO 122.6 (JUNEAU RADIO)

L-18

**CASCO COVE CGS** (ATU)(PAAT) CG O N UTC-10(-9DT) N52°49.95' E173°10.53'

W ALUTIAN ISLS

88 NOTAM FILE CDB

H-2H, L-2H

**RWY 02-20:** H5998X150 (ASPH) S-32, D-110, 2S-140, 2D-150

0.6% up N

**RWY 02:** REIL. Hill.**RWY 20:** Hill.**SERVICE:** LGT For REIL Rwy 02 call 907-292-3315.**MILITARY REMARKS:** CLOSED TO THE PUBLIC. OFFICIAL BUSINESS ONLY.

625' twr 0.5 NM NNE of int of rwys. Authorization for use outside of emerg is obtained from CCGD 17 Juneau Alaska Vice COMNAVSTA Adak or CNAB17ND. No tran svc or maint avbl. Regular snow removal performed for scheduled fits only, 24 hr ntc rqrd for other than scheduled fits.

**AIRPORT MANAGER:** 907-463-2970**COMMUNICATIONS:** CTAF 122.9**RADIO AIDS TO NAVIGATION:** NOTAM FILE SYA.**SHEMYA (H) (H) VORTACW** 109.0 SYA Chan 27 N52°43.10'

E174°03.73' 075° 33.0 NM to fld. 67/3E. VORTAC

unmonitored 0300-1100Z† Mon-Sat; all day Sun &amp; hol.

TACAN AZIMUTH unusable:

289°-029°

VOR unusable:

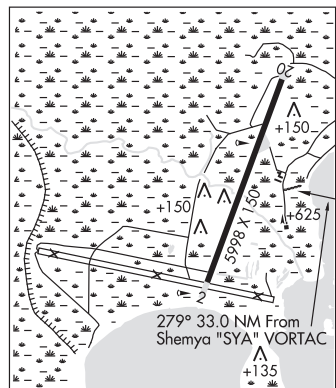
289°-029°

DME unusable:

035°-045°

057°-085° byd 35 NM

289°-029°

**SHEMYA NDB (HW)** 403 SYA N52°43.32' E174°03.62' 075° 32.9 NM to fld. 60/3E. SHUTDOWN.**COMM/NAV/WEATHER REMARKS:** For a toll free call to Cold Bay FSS dial 1-800-478-7250. For a toll free call to Kenai FSS dial 1-866-864-1737.**CASTLE MOUNTAIN AIRSTRIP** (See CHICKALOON on page 78)