

## MUNCIE

**DELAWARE CO RGNL** (MIE)(KMIE) 3 NW UTC-5(-4DT) N40°14.55' W85°23.75'

CHICAGO

937 B ARFF Index—See Remarks NOTAM FILE MIE

H-5E, 10F, L-27E

**RWY 14-32:** H6500X150 (ASPH-GRVD) S-91, D-125, 2S-127,

IAP, AD

2D-215 PCN 36 F/C/W/T HIRL

**RWY 14:** REIL. PAPI(P4L)—GA 3.0° TCH 49'. Trees.

**RWY 32:** MALSR. Trees.

**RWY 03-21:** H5198X100 (ASPH-GRVD) S-80, D-100, 2S-127,

2D-125 PCN 32 F/C/X/T MIRL

**RWY 03:** REIL. PAPI(P4L)—GA 3.0° TCH 39'. Tree.

**RWY 21:** REIL. PAPI(P4L)—GA 3.0° TCH 45'. Tree.

**LAND AND HOLD—SHORT OPERATIONS**

LDG RWY	HOLD—SHORT POINT	AVBL LDG DIST
RWY 14	03-21	4300
RWY 21	14-32	3500

**RUNWAY DECLARED DISTANCE INFORMATION**

**RWY 03:** TORA-5197 TODA-5197 ASDA-5197 LDA-5197

**RWY 14:** TORA-6500 TODA-6500 ASDA-6500 LDA-6500

**RWY 21:** TORA-5197 TODA-5197 ASDA-5197 LDA-5197

**RWY 32:** TORA-6500 TODA-6500 ASDA-6500 LDA-6500

**SERVICE:** S2 FUEL 100LL, JET A QX 1, 3 LGT Actvt MALSR Rwy 32;

REIL Rwy 03, 14, & 21; PAPI Rwy 14 & 21; MIRL Rwy 03-21; HIRL

Rwy 14-32—CTAF. REIL Rwy 03, 14, & 21 high intsty only. PAP Rwy

03 on consly.

**AIRPORT REMARKS:** Attended 1100-0300Z†. Parachute Jumping. Deer on and invof arpt. Svc aft hrs—(765)-729-1078.

Surface conditions not monitored 2000-1200Z† M-F and weekend. Rwy 14-32 is calm wind rwy. Rwy 03-21 unsked

acr ops with at least 31 pax seats not authorized. Class IV, ARFF Index A. Closed to scheduled acr ops greater than 9

passenger seats. 96 hrs for unsked acr ops with more than 30 psgr seats call amgr 765-747-5690.

**AIRPORT MANAGER:** 765-747-5690

**WEATHER DATA SOURCES:** ASOS 114.4 MIE (765) 288-9617. LAWR5.

**COMMUNICATIONS:** CTAF 120.1 ATIS 133.25 UNICOM 122.95

Ⓡ INDIANAPOLIS APP/DEP CON 120.65

**MUNCIE TOWER** 120.1 (1100-0300Z†) **GND CON** 121.9

**CLEARANCE DELIVERY PHONE:** When ATCT is clsd for CD ctc Indianapolis Apch at 317-227-5743.

**AIRSPACE:** CLASS D svc 1100-0300Z†; other times CLASS G.

**RADIO AIDS TO NAVIGATION:** NOTAM FILE MIE.

**MUNCIE (L) (L) VOR/DME** 114.4 MIE Chan 91 N40°14.24' W85°23.64' at fld. 934/3W. ASOS

DME unusable:

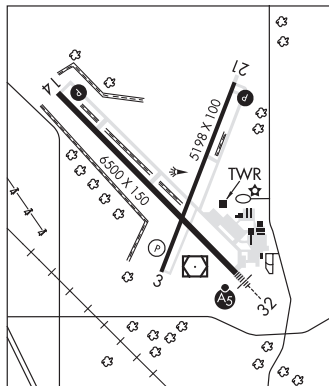
280°-300° byd 10 NM blo 5,000'

VOR unusable:

280°-300° byd 10 NM blo 5,000'

**BALL NDB (LOMW)** 365 JN N40°10.86' W85°19.26' 320° 5.0 NM to fld. 979/3W.

**ILS** 109.1 I-JNK Rwy 32. Class IE. LOM BALL NDB. Unmonitored when ATCT clsd.



**REESE** (712) 3 SE UTC-5(-4DT) N40°09.31' W85°19.14'

CHICAGO

991 TPA—1791(800) NOTAM FILE HUF

**RWY 09-27:** H2800X50 (ASPH)

**RWY 09:** Thld displcd 160'. Trees.

**RWY 27:** Road.

**SERVICE:** FUEL 100LL, UL94

**AIRPORT REMARKS:** Attended 1300Z†-dusk. UAS/model aircraft 1/2 mile north of airport. Rwy 27 cntrn mrrkg faded E end of

rwy.

**AIRPORT MANAGER:** (765) 749-7357

**COMMUNICATIONS:** CTAF/UNICOM 122.7

**CLEARANCE DELIVERY PHONE:** For CD ctc Indianapolis Apch at 317-227-5743.

**MUNCIE** N40°14.24' W85°23.64' NOTAM FILE MIE.

CHICAGO

**(L) (L) VOR/DME** 114.4 MIE Chan 91 at Delaware Co Rgnl. 934/3W.

L-27E

DME unusable:

280°-300° byd 10 NM blo 5,000'

VOR unusable:

280°-300° byd 10 NM blo 5,000'

ASOS 114.4 MIE N40°14.55' W85°23.75'. (765) 288-9617.