

CINCINNATI MUNI/LUNKEN FLD (LUK)(KLUK) 3 SE UTC-5(-4DT) N39°06.18' W84°25.06'CINCINNATI
H-10G, L-27E
IAP, AD

482 B LRA Class IV, ARFF Index A NOTAM FILE LUK

RWY 03-21: H6101X150 (ASPH-GRVD) S-60, D-70, 2D-140

PCN 42 R/C/X/T HIRL

RWY 03: REIL. PAPI(P4R)—GA 3.0° TCH 44'. RVR-R Tree.**RWY 21:** MALSR. PAPI(P4L)—GA 3.0° TCH 39'. RVR-T Trees.**RWY 07-25:** H5127X100 (ASPH-GRVD) S-11, D-20, 2D-55

PCN 38 R/C/X/T MIRL

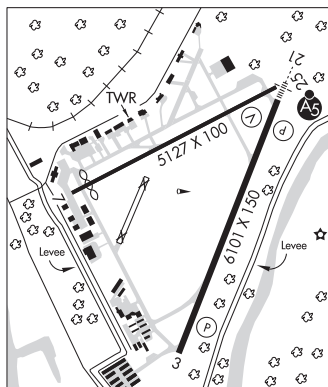
RWY 07: Thld dsplcd 439'. Tree.**RWY 25:** VASI(V4L)—GA 3.0° TCH 40'.**RUNWAY DECLARED DISTANCE INFORMATION****RWY 03:** TORA-6101 TODA-6101 ASDA-6101 LDA-6101**RWY 21:** TORA-6101 TODA-6101 ASDA-6101 LDA-6101**SERVICE:** S4 FUEL 100LL, JET A+ OX 1 LGT When ATCT clsd actv or incr instst MALSR Rwy 21; HIRL Rwy 03-21—CTAF. HIRL Rwy 03-21 preset on med instst. Rwy 07-25 PCL unavbl. Rwy 03 PAPI unusbl byd 7 degs left of cntrln. Rotating bcn located 1.7 NM E of arpt.**NOISE:** Noise abatement procs in efct call amgr. Acft maint runups rstrd btn 0200-1200Z‡.**AIRPORT REMARKS:** Attended continuously. Deer and birds on and invof arpt. Fuel A+ C513-871-2020. Clsd to scheduled ACR ops greater than 9 pax seats. 48 hr PPR for unsched ACR ops with grtr than 30 passenger seats call amgr. Rwy 07-25 clsd to unskd acr ops grtr than 30 pax seats. AER Rwy 25 and Rwy 21 are closely lctd; vfy cor rwy with compass hdg bfr dep. Arpt sfc cond unmon dly 0400-1200Z‡. Twy D, E, G, & H clsd to unskd acr ops grtr than 30 pax seats. Twy H not vsb fm ATCT, ctc ground control. When ATCT clsd, use CTAF. Ldg fee. Flight Notification Service (ADCUS) available.**AIRPORT MANAGER:** 513-352-6340**WEATHER DATA SOURCES:** ASOS (513) 321-6291**COMMUNICATIONS:** CTAF 118.7 ATIS 123.6 UNICOM 122.95

Ⓡ APP/DEP CON 121.0

LUNKEN TOWER 118.7 (1200-0400Z‡) **GND CON/CLNC DEL** 121.9 **CLNC DEL** 124.9 (when twr closed)**AIRSPACE:** CLASS D svc 1200-0400Z‡; other times CLASS E.**VOR TEST FACILITY (VOT)** 108.4**RADIO AIDS TO NAVIGATION:** NOTAM FILE CVG.

(L) (L) VORTACW 117.3 CVG Chan 120 N39°00.96' W84°42.20' 073° 14.3 NM to fld. 878/4W.

ILS/DME 110.9 I-LUK Chan 46 Rwy 21. Class IA. Unmonitored when ATCT clsd. DME unusable byd 25° left of course.

COMM/NAV/WEATHER REMARKS: Emerg frequency 121.5 not avbl at twr. Cust in tempo fac; cust fac reqs must be smtd to arpt first by calling 513-709-2761 or email #DOTE-AVIATION@CINCINNATI.OH.GOV.**CINCINNATI WEST** (See HARRISON on page 289)**CINCINNATI/NORTHERN KENTUCKY INTL** (See COVINGTON on page 277)**CIRCLEVILLE****PICKAWAY CO MEML** (CYO)(KCYO) 5 S UTC-5(-4DT) N39°30.96' W82°58.93'CINCINNATI
L-29A
IAP

685 B NOTAM FILE DAY

RWY 01-19: H4346X75 (ASPH) S-30, D-40 MIRL 0.5% up N**RWY 19:** REIL. PAPI(P4R)—GA 3.0° TCH 24'.**SERVICE:** FUEL 100LL, JET A+ LGT ACTIVATE REIL Rwy 19; PAPI Rwy 19; MIRL—CTAF.**AIRPORT REMARKS:** Unatndd. Fuel: 100LL and Jet A avbl H24 via credit card.**AIRPORT MANAGER:** 740-474-5145**COMMUNICATIONS:** CTAF/UNICOM 122.7

Ⓡ COLUMBUS APP/DEP CON 134.0

CLEARANCE DELIVERY PHONE: For CD ctc Columbus Apch at 614-338-8537.**RADIO AIDS TO NAVIGATION:** NOTAM FILE DAY.

APPLETON (VH) (H) VORTAC 116.7 APE Chan 114 N40°09.06' W82°35.30' 212° 42.2 NM to fld. 1354/6W.

VOR unusable:

025°-030°

TACAN AZIMUTH unusable:

075°-095°

110°-115°

DME unusable:

075°-080°

YELLOW BUD (T) VORW 112.5 XUB N39°31.61' W82°58.68' at fld. 689/5W.