

BRADFORD N41°09.58' W89°35.27' NOTAM FILE IKK.
(H) (H) VORTACW 114.7 BDF Chan 94 133° 12.5 NM to Marshall Co. 810/OE.
 VOR portion unusable:
 189°-199° blo 3,500' btn 25 and 35 NM
RCO 122.4 (KANKAKEE RADIO)

CHICAGO
 H-5D, L-27C

BRESSON (See COMPTON on page 52)

BULT FLD (See MONEE on page 71)

CABBI N37°52.21' W89°14.73' NOTAM FILE MDH.
NDB (LOMW) 388 MD 184° 5.5 NM to Southern Illinois. 409/1W. NDB unmonitored when ATCT clsd.

ST LOUIS

CAHOKIA/ST LOUIS

ST LOUIS DOWNTOWN (CPS)(KCPS) 1 E UTC-6(-5DT) N38°34.22' W90°09.31'

ST LOUIS
 H-5D, L-27C, A
 IAP, AD

413 B ARFF Index—See Remarks NOTAM FILE CPS

RWY 12R-30L: H7002X150 (ASPH-GRVD) S-65, D-95, 2S-160,
 2D-175 PCN 48 F/D/X/T HIRL

RWY 12R: REIL. PAPI(P4L)—GA 3.0° TCH 49'. Tree. Rgt tfc.

RWY 30L: MALSR. PAPI(P4L)—GA 3.0° TCH 53'. Pole.

RWY 12L-30R: H5301X75 (CONC) S-30, D-30 PCN 10 F/D/X/T MIRL

RWY 12L: REIL. Tree.

RWY 30R: REIL. Tree. Rgt tfc.

RWY 05-23: H2799X75 (ASPH) S-12 PCN 11 R/C/W/T MIRL

RWY 05: Tree.

RWY 23: Tower.

RUNWAY DECLARED DISTANCE INFORMATION

RWY 05: TORA-2799 TODA-2799 ASDA-2799 LDA-2799

RWY 12L: TORA-5300 TODA-5300 ASDA-5300 LDA-5300

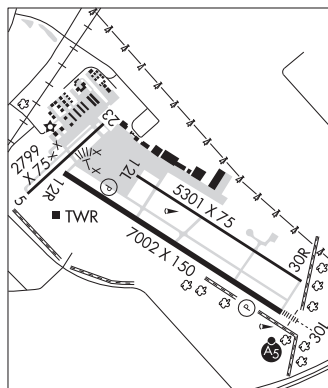
RWY 12R: TORA-7002 TODA-7002 ASDA-7002 LDA-7002

RWY 23: TORA-2799 TODA-2799 ASDA-2799 LDA-2799

RWY 30L: TORA-7002 TODA-7002 ASDA-7002 LDA-7002

RWY 30R: TORA-5300 TODA-5300 ASDA-5300 LDA-5300

SERVICE: S4 FUEL 100LL, JET A **OX 1** LGT ACTIVATE MALSR Rwy
 30L when twr clsd—CTAF. REIL Rwy 30R—CTAF. HIRL Rwy
 12R-30L preset on med ints when twr clsd. MIRL Rwy 12L-30R not
 avbl when twr clsd.



AIRPORT REMARKS: Attended continuously. Migratory waterfowl on and invof arpt. Be alert: intensive student training and helicopter operations. Sfc conds not mntd 0300-1300Z†. Rwy 12R-30L 2D-200 with PPR. Class IV, ARFF Index A. Clsd to sked acr ops gtr than 9 psgr seats. Unsked acr ops gtr than 30 psgr seats rqr 12 hr PPR. Mon-Sun (1300-0300Z†) other times by req 618-337-6060. After hrs ctc 618-646-8263. Rwy 05-23 not avbl for unscheduled acr at least 31 pasgr seats excp taxi. Rwy 12L-30R not avbl for unscheduled acr at least 31 pasgr seats excp taxi. All twys excp Twy B4 PPR acft over 120,000 lbs. Rwy 05 and 23 sfc markings faded.

AIRPORT MANAGER: 618-337-6060

WEATHER DATA SOURCES: ASOS (618) 332-0001 LAWRS.

COMMUNICATIONS: CTAF 119.925 ATIS 121.45 UNICOM 122.95

Ⓡ **SAINT LOUIS APP/DEP CON** 123.7

DOWNTOWN TOWER 119.925 (1230-0400Z†) **GND CON** 121.8 **CLNC DEL** 118.275 (121.8 when twr clsd)

AIRSPACE: CLASS D svc 1230-0400Z†; other times CLASS G.

RADIO AIDS TO NAVIGATION: NOTAM FILE STL.

TROY (L) (L) VORTACW 116.0 TOY Chan 107 N38°44.35' W89°55.12' 224° 15.0 NM to fld. 576/4E.

TACAN AZIMUTH unusable:

255°-270°

300°-310°

ACORE NDB (LOMW) 350 CP N38°31.19' W90°03.56' 304° 5.4 NM to fld. 550/OE. NOTAM FILE CPS.

ILS 109.1 I-CPS Rwy 30L. Class IA. LOM ACORE NDB. LOC unmonitored when ATCT closed. LOC unusable byd
 14° rgt of course. OM unmonitored when ATCT closed.

COMM/NAV/WEATHER REMARKS: Emerg frequency 121.5 not avbl at twr.