

**WAHOO MUNI** (AHQ)(KAHQ) 2 NE UTC-6(-5DT) N41°14.44' W96°35.67'

OMAHA

1226 B NOTAM FILE OLU

L-101, 121

RWY 02-20: H4100X75 (CONC) S-20 PCN 10 R/A/W/T MIRL

IAP

RWY 02: REIL. PAPI(P2L)—GA 3.0° TCH 40'.

RWY 20: REIL. PAPI(P2L)—GA 3.0° TCH 40'.

RWY 13-31: 3281X150 (TURF)

SERVICE: S4 FUEL 100LL, JET A LGT ACTVT REIL Rwy 02 and 20; PAPI Rwy 02 and 20; MIRL Rwy 02-20—CTAF.

AIRPORT REMARKS: Attended dawn-dusk. For svc after dusk call 402-882-2717. 100LL: fuel avbl H24 self svc. Rwy 13-31 not plowed winter months.

AIRPORT MANAGER: (402) 882-2717

WEATHER DATA SOURCES: AWOS-3P 125.975 (402) 443-4030.

COMMUNICATIONS: CTAF/UNICOM 122.7

Ⓡ OMAHA APP/DEP CON 120.1

CLEARANCE DELIVERY PHONE: For CD ctc Omaha Apch at 402-682-4395.

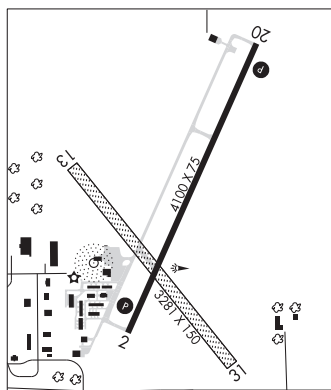
RADIO AIDS TO NAVIGATION: NOTAM FILE LNK.

LINCOLN (VH) (H) VORTACW 116.1 LNK Chan 108 N40°55.43'

W96°44.52' 010° 20.1 NM to fld. 1370/9E.

NDB (MHW) 400 AHQ N41°14.34' W96°35.92' at fld.

1222/6E. NOTAM FILE OLU.

**WALLACE MUNI** (64V) 1 S UTC-6(-5DT) N40°49.93' W101°09.84'

CHEYENNE

3101 B NOTAM FILE OLU

RWY 13-31: H2800X50 (ASPH) LIRL(NSTD)

RWY 13: Thld dspcd 200'. Road.

SERVICE: S5 LGT Rwy 13-31 NSTD LIRL. Lgts are 100' from pavement edge on both sides.

AIRPORT REMARKS: Attended Apr-Aug dawn-dusk. Rwy 13 400 ft dspcd thr mkd and lgtd with W/B lights, a set of 6 red lights is at 200 ft.

AIRPORT MANAGER: 308-387-4615

COMMUNICATIONS: CTAF 122.9

CLEARANCE DELIVERY PHONE: For CD ctc Denver ARTCC at 303-651-4257.

**WAYNE MUNI/STAN MORRIS FLD** (LCG)(KLCG) 2 E UTC-6(-5DT) N42°14.50' W96°58.94'

OMAHA

1432 B NOTAM FILE LCG

L-121

RWY 18-36: H4201X75 (CONC) S-30 MIRL

IAP

RWY 18: PAPI(P2L)—GA 3.0° TCH 40'.

RWY 36: PAPI(P2L)—GA 3.0° TCH 40'.

RWY 05-23: H3406X60 (CONC) S-12.5 MIRL

RWY 13-31: 2070X120 (TURF)

SERVICE: S4 FUEL 100LL LGT PAPI Rwy 18 and Rwy 36; MIRL Rwy 18-36 and Rwy 05-23 OPR SS-0500Z‡; AFT 0500Z‡ ACTVT—CTAF.

AIRPORT REMARKS: Attended dawn-dusk. Deer on and invof arpt. Rwy 36 end apch crosses Rwy 31 end apch. Rwy 13-31 not plowed winter months.

AIRPORT MANAGER: 402-841-0659

WEATHER DATA SOURCES: AWOS-3 120.125 (402) 375-0111.

COMMUNICATIONS: CTAF/UNICOM 122.8

Ⓡ SIOUX CITY APP/DEP CON 124.6 (1200-0330Z‡)

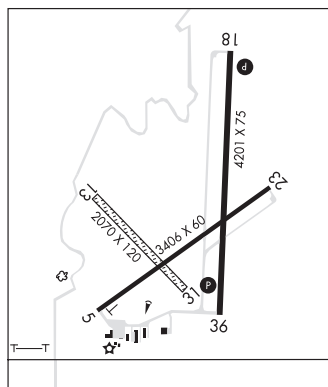
MINNEAPOLIS CENTER APP/DEP CON 125.025 (0330-1200Z‡)

CLEARANCE DELIVERY PHONE: For CD ctc Sioux City Apch at 712-293-2482.

When Sioux City Apch clsd, for CD ctc Minneapolis ARTCC at 651-463-5588.

RADIO AIDS TO NAVIGATION: NOTAM FILE SUX.

SIOUX CITY (L) TACAN Chan 112 SUX (116.5) N42°20.67' W96°19.42' 249° 30.0 NM to fld. 1087/9E.

**WHITNEY** N42°49.73' W103°05.62' NOTAM FILE CDR.

CHEYENNE

NDB (MHW) 275 HIN at Chadron Muni. 3308/7E.

L-12G

**WOLBACH** N41°22.54' W98°21.22' NOTAM FILE OLU.

OMAHA

(H) DME 112.0 OBH Chan 57 175° 24.6 NM to Central Nebraska Rgnl. 2010.

H-5B, L-12H