

**FORT MEADE (ODENTON)**

**TIPTON** (FME)(KFME) 1 SW UTC-5(-4DT) N39°05.12' W76°45.57'

150 B TPA—1000(850) NOTAM FILE FME

**RWY 10-28:** H3000X75 (ASPH) MIRL 1.0% up E

**RWY 10:** REIL. PAPI(P2L)—GA 4.0° TCH 51'. Trees. Rgt tfc.

**RWY 28:** REIL. PAPI(P2L)—GA 4.0° TCH 57'. Trees.

**SERVICE:** S2 **FUEL** 100LL, JET A+ **LGT** Actvt REIL Rwy 10 and 28; PAPI Rwy 10 and 28; MIRL Rwy 10-28—CTAF. Rwy 10-28 REIL; MIRL on photocell during dalgt hrs. Rwy 10 PAPI unusbl byd 8 degs left and right of crs. Rwy 28 PAPI unusbl byd 5 degs left of crs (trees), and 8 degs right of crs.

**AIRPORT REMARKS:** Attended 1330-2300Z†. Deer on rwys and twys. PAEW adj all twys and Rwy 10-28 indefly. Be alert for nmrs BWI tbjt arr/dep in the area. Fly tfc pattern south of the field to avoid BWI Class B Asp. Remain clear of BWI Class B Asp until clnc is obtained.

**AIRPORT MANAGER:** 410-222-6815

**WEATHER DATA SOURCES:** AWOS-3 123.925.

**COMMUNICATIONS:** CTAF/UNICOM 123.05

Ⓡ **POTOMAC APP/DEP CON** 119.7

**CLEARANCE DELIVERY PHONE:** For CD ctc Potomac Apch at 866-429-5882.

**RADIO AIDS TO NAVIGATION:** NOTAM FILE BWI.

**BALTIMORE (L) (L) VORTACW** 115.1 BAL Chan 98 N39°10.26' W76°39.68' 233° 6.9 NM to fld. 150/11W.

DME unusable:

133°-155° byd 20 NM blo 10,000'

133°-155° byd 36 NM

300°-349° byd 35 NM

VOR unusable:

133°-155° byd 20 NM blo 10,000'

197°-217° byd 17 NM

260°-281° byd 15 NM

282°-292°

TACAN AZIMUTH unusable:

029°-042° byd 30 NM

133°-155° byd 20 NM blo 10,000'

180°-190° byd 17 NM

300°-349° byd 35 NM

WASHINGTON

COPTER

L-29E, 34F, 36I, A

IAP

**FREDERICK MUNI** (FDK)(KFDK) 0 E UTC-5(-4DT) N39°25.02' W77°22.48'

309 B TPA—See Remarks NOTAM FILE FDK MON Airport

**RWY 05-23:** H5819X100 (ASPH-GRVD) S-60 PCN 30 F/C/X/T

HIRL 0.5% up SW

**RWY 05:** REIL. PAPI(P4L)—GA 3.0° TCH 43'. Trees. Rgt tfc.

**RWY 23:** ODALS. REIL. PAPI(P4L)—GA 3.0° TCH 54'. Trees.

**RWY 12-30:** H3599X75 (ASPH) MIRL 0.3% up NW

**RWY 12:** REIL. PAPI(P2L)—GA 3.0° TCH 40'. Trees. Rgt tfc.

**RWY 30:** REIL. PAPI(P2L)—GA 4.0° TCH 37'. Trees.

**SERVICE:** S4 **FUEL** 100LL, JET A **OX** 3, 4 **LGT** ACTVT ODALS Rwy 23; REIL Rwy 12, 23 and 30; PAPI Rwy 23; HIRL Rwy 05-23; MIRL Rwy 12-30—CTAF.

**AIRPORT REMARKS:** Attended 1200-0200Z†. FBO unatndd on Christmas Day. Fuel self serve 100LL avbl H24 with credit card. Rwy 23 -15 ft depression 400 ft long; 246 ft L of cntrln; parallel to apch end. TPA—1100 (800) helicopters, 1300 (1000) single and lgt twins, 1800 (1500) large twins and jets.

**AIRPORT MANAGER:** 301-600-2201

**WEATHER DATA SOURCES:** AWOS-3 (301) 600-1457

**COMMUNICATIONS:** CTAF 132.4 ATIS 124.875 UNICOM 122.95

Ⓡ **POTOMAC APP/DEP CON** 126.1

**TOWER** 132.4 (1200-0200Z†) **GND CON** 127.425 **CLNC DEL** 127.425 126.9(When twr clsd)

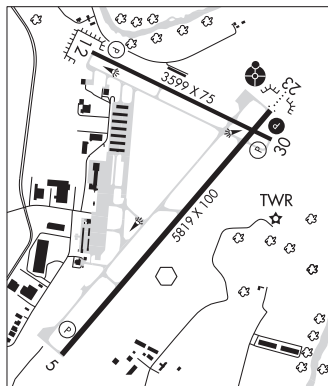
**CLEARANCE DELIVERY PHONE:** For CD when twr clsd ctc Potomac Apch 126.9 or 866-709-4993.

**AIRSPACE:** CLASS D svc 1200-0200Z†; other times CLASS E.

WASHINGTON

H-10H, 12I, L-29E, 34F, A

IAP, AD



CONTINUED ON NEXT PAGE

CONTINUED FROM PRECEDING PAGE

RADIO AIDS TO NAVIGATION: NOTAM FILE DCA.

WESTMINSTER (VH) (H) VORTAC 117.9 EMI Chan 126 N39°29.70' W76°58.71' 264° 19.0 NM to fld. 820/8W.

VOR unusable:  
 009°-056° byd 40 NM  
 128°-161° byd 20 NM blo 6,500'  
 221°-231° blo 4,500'  
 221°-231° byd 13 NM blo 16,000'  
 284°-294° byd 40 NM  
 295°-334° blo 5,500'

TACAN AZIMUTH unusable:  
 281°-055° byd 35 NM blo 3,000'

DME unusable:  
 281°-055° byd 35 NM blo 3,000'

(T) VORW 109.0 FDK N39°24.73' W77°22.51' at fld. 303/8W. NOTAM FILE FDK.

VOR unusable:  
 150°-160° byd 10 NM blo 3,000'  
 180°-190°

ILS 110.3 I-FDK Rwy 23. Class IT.

**FREEWAY** (See BOWIE on page 94)

**FRIENDLY**

**POTOMAC AIRFIELD (VKX)(KVXK)** 0 NE UTC-5(-4DT) N38°44.92' W76°57.36'

**WASHINGTON**

118 B NOTAM FILE DCA

**COPTER**

RWY 06-24: H2665X40 (ASPH) MIRL 0.3% up NE

L-29E, 34F, 36I, A

RWY 06: REIL. PAPI(P2L)—GA 5.0° TCH 19'. Thld displcd 376'. Trees.

IAP

RWY 24: REIL. PAPI(P2L)—GA 5.5° TCH 20'. Thld displcd 90'. Trees.

SERVICE: S4 FUEL 100LL LGT MIRL Rwy 06-24 opr SS-SR; To ACTVT otr times and ACTVT PAPI Rwy 06 and 24—CTAF. Rwy 06 PAPI cntrln use only. Rotating bcn located 1000' north of arpt.

NOISE: Noise abatement procedures: avoid takeoff 0300-1200Z.

AIRPORT REMARKS: Attended 1200-0300Z. Expect 24 hr surveillance: civil and mil, ground and air. Arpt within Flt Rstrd Zone (FRZ). FRZ pilots must file FRZ scy FP thru 703-771-3476. SFRA or IFR FP does not grant FRZ asp acs. For acs pilot must be pre-apvd thru TSA MD3 program. To apply for FRZ access, see arpt website. Unlimited vehicle access to acft movement areas.

AIRPORT MANAGER: 301-248-5720

COMMUNICATIONS: CTAF/AUNICOM 122.8

® POTOMAC APP/DEP CON 124.7 125.65 (DC-FRZ)

CLEARANCE DELIVERY PHONE: For CD ctc Potomac Apch at 866-599-3874.

RADIO AIDS TO NAVIGATION: NOTAM FILE ADW.

ANDREWS (L) (L) VORTACW 113.1 ADW Chan 78 N38°48.43' W76°51.98' 240° 5.5 NM to fld. 263/10W.

VOR unusable:  
 035°-045° blo 2,500'  
 089°-182°  
 183°-227° blo 4,000'  
 230°-236° byd 20 NM  
 237°-270°  
 333°-048°

TACAN AZIMUTH unusable:  
 035°-045° blo 2,500'  
 220°-280°  
 295°-310°

DME unusable:  
 035°-045° blo 2,500'  
 220°-280°

COMM/NAV/WEATHER REMARKS: Automated UNICOM; 3 clicks adzy and wx, 4 clicks radio check. Visitors please tune 122.85 for parking instructions and gnd svcs.

