

TURNERS FALLS (See MONTAGUE on page 129)

VINEYARD HAVEN

MARTHA'S VINEYARD (MVY)(KMYV) 3 S UTC-5(-4DT) N41°23.61' W70°36.83'

NEW YORK
H-10J, 12X, L-33D
IAP, AD

67 B ARFF Index—See Remarks NOTAM FILE MVY

RWY 06-24: H5504X100 (ASPH-GRVD) S-65, D-108, 2S-137,
2D-185 PCN 29 F/A/X/T HIRL

RWY 06: REIL. PAPI(P4R)—GA 3.0° TCH 53'. RVR-R Trees.

RWY 24: MALSR. PAPI(P4R)—GA 3.0° TCH 52'. RVR-T Rgt tfc.

RWY 15-33: H3327X75 (ASPH) S-31, D-45, 2D-61 PCN 16 F/A/X/T
MIRL 0.3% up NW

RWY 15: Trees.

RWY 33: REIL. Trees. Rgt tfc.

RUNWAY DECLARED DISTANCE INFORMATION

RWY 06: TORA-5504 TODA-5504 ASDA-5504 LDA-5504

RWY 15: TORA-3327 TODA-3327 ASDA-3327 LDA-3327

RWY 24: TORA-5504 TODA-5504 ASDA-5504 LDA-5504

RWY 33: TORA-3327 TODA-3327 ASDA-3327 LDA-3327

SERVICE: S2 **FUEL** 100LL, JET A **LGT** When ATCT clsd ACTVT MALSR
Rwy 24; REIL Rwy 33; HIRL Rwy 06-24; MIRL Rwy 15-33—CTAF.

NOISE: Arpt has noise abatement proc. Ctc opns 508-693-7022. Avoid residential areas SW of arpt.

AIRPORT REMARKS: Attended continuously. Class I, ARFF Index B. 24 hr

PPR for unsked acr ops with more than 9 pax seats call amgr

508-693-7022. Rwy 15-33 not avbl for skedd acr ops more than 9

pax seats or unsked acr ops at least 31 pax seats. Twy D fm Rwy 06 to Rwy 15 clsd to acft with ovr 9 pax. Hls prohibited

fm hover taxi, ldg and tkof fm t-hngrs. Parking fee all acft. Ldg fee all acft over 4000 lbs.

AIRPORT MANAGER: 508-693-7022

WEATHER DATA SOURCES: ASOS 126.25 (508) 696-6988.

COMMUNICATIONS: CTAF 121.4 ATIS 126.25 (508) 693-7685 UNICOM 122.95

Ⓡ **BOSTON CONSOLIDATED TRACON APP/DEP CON** 133.75

CLNC DEL 119.7 (When twr clsd)

VINEYARD TOWER 121.4 (May 15-Oct 31 1100-0300Z†, Nov 1-May 14 1200-2200Z†)

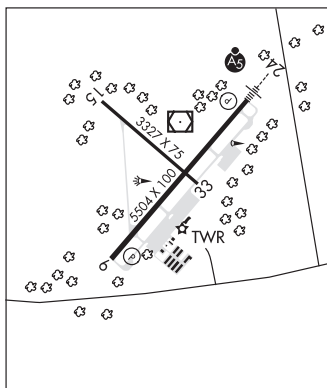
GND CON 124.35 **CLNC DEL** 124.35

AIRSPACE: CLASS D svc May 15-Oct 31 1100-0300Z†, Nov 1-May 14 1200-2200Z†; other times CLASS G.

RADIO AIDS TO NAVIGATION: NOTAM FILE MVY.

MARTHAS VINEYARD (L) (L) VORW/DME 114.5 MVY Chan 92 N41°23.77' W70°36.76' at fld. 62/15W.

ILS/DME 108.7 I-MVY Chan 24 Rwy 24. Class IE. Unmonitored when ATCT clsd. Autopilot cpd apchs NA blw 300' MSL.



WALTER J KOLADZA (See GREAT BARRINGTON on page 124)

WESTFIELD-BARNES RGNL (See WESTFIELD/SPRINGFIELD on page 139)