

**WORCESTER RGNL** (ORH)(KORH) 3 W UTC-5(-4DT) N42°16.03' W71°52.54'

NEW YORK

1009 B LRA Class I, ARFF Index B NOTAM FILE ORH

H-101, 11D, 12K, L-33C, 34J

**RWY 11-29:** H7001X150 (ASPH-GRVD) S-120, D-250, 2S-138,

IAP, AD

2D-550 PCN 89 F/C/W/T HIRL CL

**RWY 11:** ALSF2. TDZL. PAPI(P4R)—GA 3.0° TCH 55'. RVR-TMR Hill.

**RWY 29:** REIL. PAPI(P4L)—GA 3.0° TCH 54'. RVR-TMR

**RWY 15-33:** H5000X100 (ASPH-GRVD) S-85, D-120, 2S-138,

2D-210 PCN 35 F/C/W/T MIRL

**RWY 15:** REIL. VASI(V4L)—GA 3.6° TCH 42'. Antenna.

**RWY 33:** REIL. PAPI(P4L)—GA 3.0° TCH 40'.

**RUNWAY DECLARED DISTANCE INFORMATION**

**RWY 11:** TORA-7001 TODA-7001 ASDA-7001 LDA-7001

**RWY 15:** TORA-5000 TODA-5000 ASDA-5000 LDA-5000

**RWY 29:** TORA-7001 TODA-7001 ASDA-7001 LDA-7001

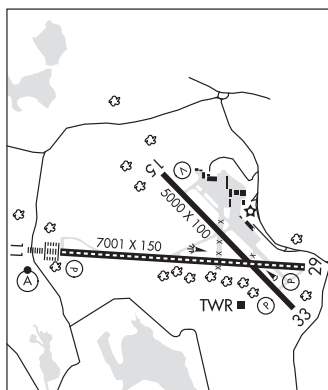
**RWY 33:** TORA-5000 TODA-5000 ASDA-5000 LDA-5000

**ARRESTING GEAR/SYSTEM**

**RWY 11:** EMAS

**RWY 29:** EMAS

**SERVICE:** S4 FUEL 100LL, JET A LGT Actvt REIL Rwy 15, 29 and 33;  
HIRL Rwy 11-29; MIRL Rwy 15-33—CTAF. Rwy 11 ALSF-2 becomes  
SSALS preset on med instst only when twr clsd. Rwy 15 VASI unubl byd  
9° left of crs.



**AIRPORT REMARKS:** Attended continuously. Wildlife and birds on and in/ov arpt. Use ctn for arpt vehicles mnt CTAF and operg on arpt durg non twr hrs. Rwy guard lgts installed on all twy to rwy intersections, Rwy 11-29 only. EMAS 170' wide, 154' length located at DER 11. EMAS 170' wide, 300' length located at DER 29. Ldg fee for multi-eng acft and lrg. Flight Notification Service (ADCUS) available. 2 hours advance notice for customs.

**AIRPORT MANAGER:** 508-849-5550

**WEATHER DATA SOURCES:** ASOS (508) 795-7546

**COMMUNICATIONS:** CTAF 120.5 ATIS 126.55 (508) 757-0962 UNICOM 122.95

RCO 122.2 (BRIDGEPORT RADIO)

Ⓡ **BRADLEY APP/DEP CON** 119.0 **CLNC DEL** 119.0 (0200-1130Z‡)

**TOWER** 120.5 (1130-0200Z‡) **GND CON** 123.85 **CLNC DEL** 128.65

**AIRSPACE:** CLASS D svc 1130-0200Z‡; other times CLASS E.

**VOR TEST FACILITY (VOT)** 108.2

**RADIO AIDS TO NAVIGATION:** NOTAM FILE BDR.

**GARDNER (L) (L) VOR/DME** 116.95 GDM Chan 116(Y) N42°32.76' W72°03.49' 168° 18.6 NM to fld.  
1280/14W.

**ILS/DME** 110.9 I-RSR Chan 46 Rwy 11. Class III/E. Unmonitored when ATCT closed. DME unusable byd 12° left of course; byd 13 NM; byd 25° right of course.

**ILS/DME** 110.9 I-EKW Chan 46 Rwy 29. Class IB. Unmonitored when ATCT clsd. Glideslope unusable for coupled apchs blo 1,266' MSL. LOC unusable byd 25° left and byd 25° right of course.

**COMM/NAV/WEATHER REMARKS:** Durg sn removal ops, 30 min PPR, freq 120.50 durg twr hrs, freq 119.0 durg non twr hrs or call 508-799-1325. Tsnt acft ctc FBO on 122.95 for svcs.