

## CONTINUED FROM PRECEDING PAGE

AIRPORT MANAGER: 609-754-6466

COMMUNICATIONS: SFA PTD 372.2 D-ATIS 110.6 270.1 DSN 650-2847

① APP/DEP CON 126.475 363.8 (Arr sector for IFR radar pattern when open is 120.25/290.9)

TOWER 118.65 255.6 257.8 GND CON 121.8 275.8 CLNC DEL 135.2 335.8

COMD POST 134.1 237.15 (Use 237.15 within 75 NM of arpt. If 237.15 is inop, use 134.1 (call Brickyard))

108 ANG COMD POST 251.2 321.0 (call Torch Ctl) DSN 650-2127 PMSV METRO 239.8 AN/FMQ-19 auto obs sys in use, augmented by human obsn when nec dur afld hrs. Vis of afld rstd fr base wx ops NW-SE durg manual augmentation by wx fcstr. Full wx svc avbl H24 Mon-Fri. Limited svc wknds and hol (fcstr on call C609-668-1211); H24 durg ARC/ANG drill wknd. Wx flt DSN 650-1130, C609-754-1130. When wx svc clsd, tran crews ctc 15OWS at Scott AFB H24 DSN 576-9755/9702, C618-256-9755/9702. Durg evac of wx flt ctc 15OWS at nbr abv. RON tran crew rqr wx brief prior to ldg ATC will supplement obsn as needed. ARMY OPS 36.3 FT DIX RNG 34.0 41.0 RANGE CTL 34.3

AIRSPACE: CLASS D.

RADIO AIDS TO NAVIGATION: NOTAM FILE WRI.

(L) (L) VORTACW 110.6 GXU Chan 43 N40°00.57' W74°35.79' at fld. 119/12W.

VOR unusable:

165°-265° byd 15 NM

165°-265° byd 8 NM blo 2,000'

266°-269°

270°-285° byd 15 NM

286°-330° byd 35 NM blo 3,000'

355°-060° byd 20 NM

TACAN AZIMUTH unusable:

165°-285° byd 12 NM blo 2,000'

165°-285° byd 15 NM

355°-060° byd 20 NM

VOR &amp; TACAN No NOTAM MP 1100-1300Z‡ Mon and thr

DME unusable:

165°-285° byd 12 NM blo 2,000'

165°-285° byd 15 NM

355°-060° byd 20 NM

ILS 110.1 I-WRI Rwy 06. Class IID. PAR - apch dly fr 1100-0300Z‡ contingent upon PAR controller avbl and/or deployed status of mobile PAR. 108 ANG Comd Post - 303.0 Remarks: (call Torch Control) DSN 650-2127.

ILS/RADAR-RADAR: between 0300-1100Z‡, PAR avbl for full stop ldg only when wx is blw TACAN min. No NOTAM MP: 1100-1300Z‡ Tue, Wed, Fri.†

ILS 110.1 I-JTQ Rwy 24. Class ID. No NOTAM MP: 1100-1300Z‡ Tue, Wed, Fri. Autopilot cpd apchs NA blw 580' MSL.

PAR (1200-0200Z‡ Mon-Fri)

COMM/NAV/WEATHER REMARKS: See Terminal FLIP for Radar minima. Radar No NOTAM MP Mon-Thur 0930-1130Z‡, Fri 0730-1130Z‡, Sat 1100-1500Z‡.

MILLVILLE MUNI (MIV)(KMIV) 3 SW UTC-5(-4DT) N39°22.07' W75°04.33'

WASHINGTON

85 B NOTAM FILE MIV

H-101, 121, L-34G, A

RWY 10-28: H6003X150 (ASPH-GRVD) S-120, D-179, 2S-83,

IAF

2D-263 PCN 55 F/D/W/T MIRL

RWY 10: MALSR. PAPI(P4L)—GA 3.0° TCH 53'. Trees.

RWY 28: PAPI(P4L)—GA 3.0° TCH 29'.

RWY 14-32: H5058X150 (CONC) S-45.5, D-68, 2S-83, 2D-229

PCN 19 R/C/W/T MIRL

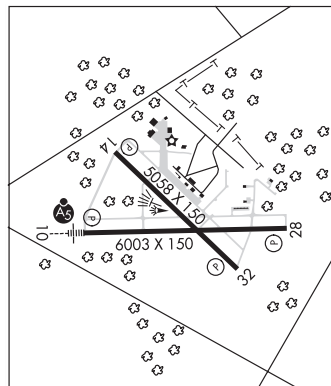
RWY 14: PAPI(P4L)—GA 3.0° TCH 48'. Trees.

RWY 32: PAPI(P4L)—GA 3.0° TCH 39'. Trees.

SERVICE: S8 FUEL 100LL, JET A LGT ACTIVATE MALSR Rwy 10; MIRL Rwy 10-28 and Rwy 14-32—CTAF.

AIRPORT REMARKS: Attended 1300-2100Z‡. Birds on and in/ov arpt. PAEW within all rwy and twy safety areas daily May-Oct. All ultralight acft, glider ops and formation flts PPR. Call 856-825-1244 Mon-Fri 1300-2100Z‡. Self-svc fuel avbl 24 hrs with credit card. Main apron clsd to tran acft north of Twy K. Twy G not to be used by acft with wingspan gr than 48' north of Twy A. Fence line 44' north of Twy G cntrln, north of Twy A. Rwy 10 calmd wind rwy.

AIRPORT MANAGER: 856-825-1244



CONTINUED ON NEXT PAGE

## CONTINUED FROM PRECEDING PAGE

WEATHER DATA SOURCES: ASOS 119.6 (856) 327-3455.

COMMUNICATIONS: CTAF/UNICOM 123.0

RCD 122.2 (MILLVILLE RADIO)

Ⓡ ATLANTIC CITY APP/DEP CON 124.6

CLEARANCE DELIVERY PHONE: For CD if una to ctc on FSS freq, ctc Atlantic City Approach at 609-485-6193.

AIRSPACE: CLASS E.

RADIO AIDS TO NAVIGATION: NOTAM FILE MIV.

CEDAR LAKE (L) (L) VORW/DME 115.2 VCN Chan 99 N39°32.26' W74°08.03' 216° 11.3 NM to fld. 120/10W.

RAINBOW NDB (HW) 363 RNB N39°25.09' W75°08.10' 147° 4.2 NM to fld. 92/11W.

ILS 110.9 I-MIV Rwy 10. Class IA. Unmonitored. Autopilot cpd apch NA blw 300 MSL.

**MONMOUTH EXEC** (See BELMAR/FARMINGDALE on page 158)

**MORRISTOWN MUNI** (MMU)(KMMU) P (A) 3 E UTC-5(-4DT) N40°47.96' W74°24.89'

NEW YORK

187 B TPA—See Remarks NOTAM FILE MMU

COPTER

RWY 05-23: H5998X150 (ASPH-GRVD) S-30, D-80, 2S-101

H-101, 12J, L-33A, 34H

PCN 25 F/C/X/T HIRL

IAP, AD

RWY 05: REIL. Trees.

RWY 23: MALSRS.

RWY 13-31: H3997X150 (ASPH-GRVD) S-30 PCN 11 F/C/X/T MIRL

RWY 13: Trees.

RWY 31: REIL. PAPI(P2L)—GA 3.5° TCH 39'. Trees.

SERVICE: FUEL 100LL, JET A, A+ OX 1, 2, 3, 4 LGT Dusk-Dawn;  
ACTVT HIRL Rwy 05-23, MIRL Rwy 13-31, REIL Rwy 05 and 31,  
MALSRS Rwy 23, and PAPI Rwy 31—CTAF. MILITARY—FUEL  
(NC-100LL, A+)

NOISE: Noise abatement procedures in effect, ctc Noise Abatement Office  
973-538-3366 extension 122. All arrival/departure acft follow  
manufacturers recommended procedures for quiet ops and minimum  
noise. Voluntary noise abatement proc include avoiding TGL ops on  
Rwy 13-31.

AIRPORT REMARKS: Attended 1145-0330Z†. Birds and deer on and in/ov  
arpt. When twr clsd all acft and vehicles must state intentions on CTAF  
before ops on any rwy. ARFF svc avbl 24 hrs daily. For ARFF svcs when  
twr clsd ctc ARFF station—CTAF or 973-455-1953. Inbound tfc  
request FBO svcs, instructions, and ramp advisories 30 min prior to  
arrival. After ldg ctc FBO again 129.6 for preferred ramp entrance to Twy D or Twy J. No TGL on Rwy 13-31 unless the  
crosswind vclty for Rwy 05-23 exceeds 10 kts. No turbojet ldg on Rwy 13 and Rwy 31 unless the cross wind velocity for  
Rwy 05-23 exceeds 16 kts. TPA—1200(1013) lgt acft, 1700(1513) heavy acft. Acft carrying explosive cargo PPR before  
ldg, call 973-538-6400. Helicopter ops over residential areas blo 1000' MSL should be avoided. Route 80 visual apch  
preferred for Rwy 23. During snow removal ops 15 minute prior notice required on 118.1 and no practice low apchs or  
touch and go ldgs. Taxilane K N of FBO ramp, no hel or acft with a wingspan grtr than 50 ft. US Customs avbl Mon-Fri  
1300-2100Z†, between 2101-1259Z† and weekends call 973-267-0302 for appointment. Morristown customs  
association fees apply, ctc arpt manager 973-538-6400 for details. Stage I departure fee 0400-1145Z†. Ldg fee. User  
fee arpt. Flight Notification Service (ADCUS) avbl. NOTE: See Special Notices—Arrival Alert.

AIRPORT MANAGER: 973-538-6400

WEATHER DATA SOURCES: AWOS-3 (973) 290-0135 LAWRS.

COMMUNICATIONS: CTAF 118.1 ATIS 124.25

Ⓡ NEWARK APP CON 127.6

TOWER 118.1 (1145-0330Z†) GND CON 134.2 CLNC DEL 128.6

Ⓡ NEWARK DEP CON 119.2

CLEARANCE DELIVERY PHONE: For CD when ATCT is clsd ctc Newark Apch at 800-645-3206.

AIRSPACE: CLASS D svc 1145-0330Z†; other times CLASS G.

RADIO AIDS TO NAVIGATION: NOTAM FILE TEB.

TEEBORO (T) (T) VORW/DME 108.4 TEB Chan 21 N40°50.92' W74°03.73' 271° 16.3 NM to fld. 8/11W.

DME unusable:

060°-080° byd 22 NM blo 2,500'

081°-120° blo 4,000'

121°-180° blo 3,000'

236°-246°

VOR unusable:

081°-120° blo 4,000'

121°-180° blo 3,000'

236°-246°

ILS 110.3 I-MMU Rwy 23. Class IB. Unmonitored when ATCT closed. Glideslope unusable for cpd apchs blw  
875'.

