

LATROBE

ARNOLD PALMER RGNL (LBE)(KLBE) 2 SW UTC-5(-4DT) N40°16.39' W79°24.62'

DETROIT
H-10H, 12I, L-29C
IAP, AD

1199 B Class I, ARFF Index B NOTAM FILE LBE

RWY 06-24: H8222X150 (ASPH-GRVD) S-120, D-198, 2S-114,
2D-321 PCN 56 F/B/X/T HIRL

RWY 06: REIL. PAPI(P4L)—GA 3.0° TCH 48'. Pole. 1.4% down.

RWY 24: MALSR. PAPI(P4L)—GA 3.0° TCH 55'. Thld dsplcd 850'.

Trees. Rgt tfc.

RUNWAY DECLARED DISTANCE INFORMATION

RWY 06: TORA-8222 TODA-8222 ASDA-8222 LDA-8222

RWY 24: TORA-8222 TODA-8222 ASDA-8222 LDA-7372

SERVICE: S4 FUEL 100LL, JET A OX3 LGT When ATCT clsd, ACTVT
MALSR Rwy 24; REIL Rwy 06; HIRL Rwy 06-24; Twy A, B, C and
D—CTAF. Rwy 24 PAPI unusbl byd 8 degs right of cntrln.

AIRPORT REMARKS: Attended continuously. Deer and birds on and invof
arpt. Ldg fee. PPR 24 for unscheduled act ops with more than 9 pax
call arpt mgr 724-640-7234.

AIRPORT MANAGER: 724-539-8100

WEATHER DATA SOURCES: AWOS-3 (724) 537-0671

COMMUNICATIONS: CTAF 125.0 ATIS 118.375 (724-537-0671)

Ⓡ **JOHNSTOWN APP/DEP CON** 121.2 (1200-0400Z) or ctc
814-532-5960.

Ⓡ **CLEVELAND CENTER APP/DEP CON** 124.4 (0400-1200Z) or ctc Cleveland
ARTCC at 440-774-0234.

PALMER TOWER 125.0 (1115-0300Z) **GND CON** 121.8

CLEARANCE DELIVERY PHONE: For CD when ATCT clsd ctc Johnstown Apch at 814-532-5960, when Apch clsd ctc Cleveland
ARTCC at 440-774-0213.

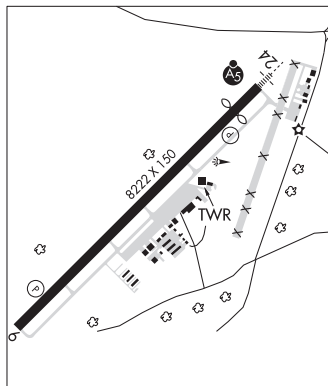
AIRSPACE: CLASS D svc 1115-0300Z; other times PPR; other times CLASS G.

RADIO AIDS TO NAVIGATION: NOTAM FILE AOO.

INDIAN HEAD (L) TACAN Chan 19 IHD (108.2) N39°58.45' W79°21.50' 358° 18.1 NM to fld. 2820/6W.

TACAN AZIMUTH OTS infdef

ILS 110.9 I-LBE Rwy 24. Class IE. Unmonitored when ATCT closed.



LAZY B RANCH (See DOVER on page 266)

LEBANON

KELLER BROTHERS (Ø8N) 5 SE UTC-5(-4DT) N40°17.49' W76°19.72'

NEW YORK
L-34G
IAP

550 B NOTAM FILE IPT

RWY 07-25: 2692X120 (TURF) LIRL(NSTD)

RWY 07: Thld dsplcd 701'. Trees.

RWY 25: Thld dsplcd 793'. Tree.

SERVICE: FUEL 100LL LGT ACTVT WDI lgt, rotg bcn and LIRL Rwy
07-25—121.9. Rwy 07-25 nstd LIRL, rwy ends identified by 2 strobe
lghts and nstd thld lgt fixtures. Rwy 07-25 thlds and dsplcd thlds marked
with lghts.

AIRPORT REMARKS: Unattended. 100LL self serve.

AIRPORT MANAGER: 717-598-0057

COMMUNICATIONS: CTAF 122.9

Ⓡ **HARRISBURG APP/DEP CON** 126.45 (080-179)

CLEARANCE DELIVERY PHONE: For CD ctc Harrisburg Apch at 800-932-0712.

RADIO AIDS TO NAVIGATION: NOTAM FILE LNS.

LANCASTER (L) (L) VOR/DME 117.3 LRP Chan 120 N40°07.20'
W76°17.48' 360° 10.4 NM to fld. 399/9W.

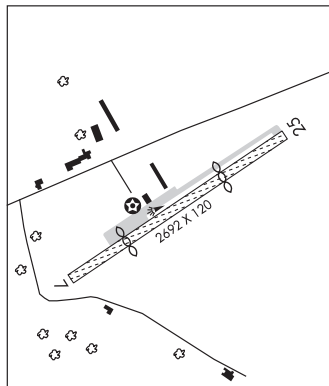
VOR unusable:

195°-273° byd 21 NM blo 9,000'

DME unusable:

180°-190°

320°-030° byd 31 NM blo 8,000'



LEHIGH VALLEY INTL (See ALLENTOWN on page 254)