

**QUAKERTOWN** (UKT)(KUKT) 2 W UTC-5(-4DT) N40°26.11' W75°22.92'

NEW YORK  
L-33A, 34G  
IAP

525 B NOTAM FILE UKT

**RWY 11-29:** H3210X75 (ASPH) S-12 MIRL 0.6% up W

**RWY 11:** REIL. PAPI(P2L)—GA 4.0° TCH 44'. Trees.

**RWY 29:** REIL. PAPI(P2L)—GA 4.0° TCH 48'. Thld dsplcd 190'. Tree.

**RUNWAY DECLARED DISTANCE INFORMATION**

**RWY 11:** TORA-3210 TODA-3210

**RWY 29:** TORA-3210 TODA-3210

**SERVICE:** S4 **FUEL** 100LL **LGT** Dusk-Dawn. ACTIVATE REIL Rwy 11 and Rwy 29; MIRL Rwy 11-29—CTAF.

**AIRPORT REMARKS:** Attended 1330-2200Z†. 100LL avbl 24 hrs self-serve credit card. Deer on and in/ovf arpt. Acft with wingspan greater than 54.5' must coordinate with arpt manager.

**AIRPORT MANAGER:** 215-720-9715

**WEATHER DATA SOURCES:** AWOS-3 119.475 (215) 538-7610.

**COMMUNICATIONS:** CTAF/UNICOM 122.725

Ⓡ PHILADELPHIA APP/DEP CON 123.8

CLNC DEL 118.55

**CLEARANCE DELIVERY PHONE:** For CD ctc Philadelphia Apch at 800-354-9884.

**RADIO AIDS TO NAVIGATION:** NOTAM FILE IPT.

**EAST TEXAS (L) (L) VORW/DME** 110.2 ETX Chan 39 N40°34.86' W75°41.04' 131° 16.4 NM to fld. 741/9W.

VOR unusable:

255°-265°



**RAVINE** N40°33.20' W76°35.96' NOTAM FILE IPT.

NEW YORK  
H-10H, L-30J

(L) (L) **VORTACW** 114.6 RAV Chan 93 059° 13.8 NM to Schuylkill Co/Joe Zerbey. 1750/11W.

**READING RGNL/CARL A SPAATZ FLD** (RDG)(KRDG) 3 NW UTC-5(-4DT) N40°22.71'

NEW YORK  
H-10I, 12I, L-30K, 34G, A  
IAP, AD

W75°57.91'

343 B Class IV, ARFF Index A NOTAM FILE RDG

**RWY 13-31:** H6350X150 (ASPH-GRVD) S-75, D-200, 2S-175, 2D-400 PCN 60 F/C/X/U HIRL

**RWY 13:** REIL. PAPI(P4L)—GA 3.0° TCH 45'. Trees.

**RWY 31:** REIL.

**RWY 18-36:** H5151X150 (ASPH-GRVD) S-75, D-200, 2S-175, 2D-400 PCN 60 F/C/X/U HIRL 1.0% up S

**RWY 18:** PAPI(P4L)—GA 3.0° TCH 56'. Trees.

**RWY 36:** MALSF. RVR-T Trees.

**LAND AND HOLD—SHORT OPERATIONS**

LDG RWY	HOLD—SHORT POINT	AVBL LDG DIST
RWY 13	18-36	5200
RWY 18	13-31	3050

**RUNWAY DECLARED DISTANCE INFORMATION**

**RWY 13:** TORA-6350 TODA-6350 ASDA-6350 LDA-6350

**RWY 18:** TORA-5151 TODA-5151 ASDA-5151 LDA-5151

**RWY 31:** TORA-6350 TODA-6350 ASDA-6350 LDA-6350

**RWY 36:** TORA-5151 TODA-5151 ASDA-5151 LDA-5151

**ARRESTING GEAR/SYSTEM**

**RWY 13:** EMAS

**SERVICE:** S4 **FUEL** 100LL, JET A **OX** 1, 2, 3, 4 **LGT** When ATCT clsd actvt MALSF Rwy 36; REIL Rwy 13, 31; PAPI Rwy 13 and 18; HIRL Rwy 13-31 and 18-36; twy lgts—CTAF. Rwy 13 PAPI unusbl byd 3 degs left of cntrl.

**AIRPORT REMARKS:** Attended 1100-0400Z†. Birds on & in/ovf arpt. PPR 24 hrs for actv opns with more than 30 pax seats. Call AMGR 610-372-4666. Ldg fee for turbine acft.

**AIRPORT MANAGER:** 610-372-4666

**WEATHER DATA SOURCES:** ASOS 127.1 (610) 372-9863.

**COMMUNICATIONS:** CTAF 119.9 ATIS 127.1 UNICOM 122.95

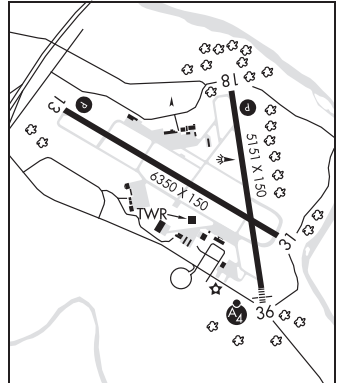
Ⓡ READING APP/DEP CON 125.15 (1100-0500Z†)

Ⓡ HARRISBURG APP/DEP CON 124.1 (0500-1100Z†)

**TOWER** 119.9 (1100-0500Z†) **GND CON** 121.9

**CLEARANCE DELIVERY PHONE:** For CD when ATCT clsd, ctc Harrisburg Apch at 800-932-0712.

**AIRSPACE:** CLASS D svc 1100-0500Z†; other times CLASS E.



CONTINUED ON NEXT PAGE

## CONTINUED FROM PRECEDING PAGE

RADIO AIDS TO NAVIGATION: NOTAM FILE IPT.

EAST TEXAS (L) (L) VORW/DME 110.2 ETX Chan 39 N40°34.86' W75°41.04' 236° 17.7 NM to fld. 741/9W.

VOR unusable:

255°-265°

ILS/DME 110.55 I-VXO Chan 42(Y) Rwy 13. Class IA. DME unusable byd 19° right of course; byd 8° left of course byd 18 NM. Glideslope unusable byd 004° left of course.

ILS 109.5 I-RDG Rwy 36. Class IB. Unmonitored when ATCT closed.

## REEDSVILLE

MIFFLIN CO (RVL)(KRVL) 5 NW UTC-5(-4DT) N40°40.64' W77°37.61'

819 B NOTAM FILE IPT

RWY 06-24: H5001X75 (ASPH) S-60 MIRL

RWY 06: REIL. PAPI(P2L)—GA 4.0° TCH 48'. Trees.

RWY 24: REIL. PAPI(P4L)—GA 3.0° TCH 42'.

SERVICE: S4 FUEL 100LL, JET A LGT ACTVT REIL Rwy 06 and Rwy 24; PAPI Rwy 06 and Rwy 24; MIRL Rwy 06-24—CTAF.

AIRPORT REMARKS: Attended May 1-Oct 31 Mon-Fri 1300-2200Z†, Nov 1-Apr 30 Mon-Fri 1300-2100Z†, Sat 1300-1700Z†. 100LL self-svc 24 hrs. Jet-A fuel by appointment only after hrs. Call 717-994-0323 during attended hrs to make appointment. Phone numbers posted on the office door for after hr calls. Glider activity during summer months. Helicopters land on apron.

AIRPORT MANAGER: 717-667-6829

WEATHER DATA SOURCES: AWOS-3PT 123.85 (717) 667-3993.

COMMUNICATIONS: CTAF/UNICOM 122.7

® NEW YORK CENTER APP/DEP CON 134.8

CLEARANCE DELIVERY PHONE: For CD ctc New York ARTCC at 631-468-1425.

RADIO AIDS TO NAVIGATION: NOTAM FILE AOO.

PHILIPSBURG (VH) (H) VORTAC 115.5 PSB Chan 102 N40°54.98'

W77°59.56' 141° 22.0 NM to fld. 2443/10W.

VOR unusable:

005°-010° byd 40 NM

035°-060° byd 40 NM

095°-104° byd 40 NM

105°-115° byd 40 NM blo 18,000'

116°-145° byd 40 NM

146°-156° byd 40 NM blo 5,000'

146°-156° byd 70 NM

157°-171° byd 40 NM

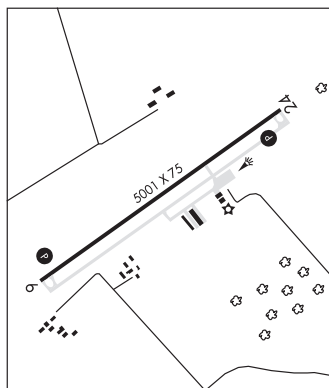
172°-189° byd 40 NM blo 10,000'

172°-189° byd 78 NM

200°-205° byd 40 NM

320°-325° byd 40 NM

LOC 109.3 I-RVL Rwy 06. LOC unmonitored. LOC unusable byd 20° either side of course; byd 16 NM blo 4,000'.



REIGLE FLD (See PALMYRA on page 290)

REVL0C N40°32.79' W78°44.82' NOTAM FILE AOO.  
(L) DME 114.75 REC Chan 94(Y) 194° 5.3 NM to Ebensburg. 2340.

DETROIT  
L-29D

RIDGE SOARING (See UNIONVILLE on page 310)

ROCK SPRINGS FLF N40°47.40' W77°51.60'/1230  
ASOS (814) 237-5778

DETROIT

ROCKY HILL (See CRESCO on page 266)

ROSTRAVER (See MONONGAHELA on page 286)