

**ROSEBURG RGNL** (RBG)(KRBG) 1 NW UTC-8(-7DT) N43°14.36' W123°21.35'

533 B NOTAM FILE RBG

**RWY 16-34:** H5003X100 (ASPH) S-42, D-54, 2D-88 MIRL

0.7% up N

**RWY 16:** REIL. Thld dspcd 1100'. Hill.

**RWY 34:** REIL. PAPI(P4R)—GA 4.0° TCH 53'. Thld dspcd 372'.

Road.

**SERVICE:** S4 FUEL 100LL, JET A OX1 LGT ACTIVATE REIL Rwy 16 and Rwy 34, MIRL Rwy 16-34—CTAF. Rwy 34 PAPI opr continuously.

**AIRPORT REMARKS:** Attended 1600-0100Z†. Waterfowl on and invof arpt.

Rwy 16 has a 150' blast pad marked with yellow chevrons. Segmented circle nstd, marked with white tires.

**AIRPORT MANAGER:** 541-672-7701

**WEATHER DATA SOURCES:** ASOS 135.475 (541) 673-1483.

**COMMUNICATIONS:** CTAF/UNICOM 122.8

RCO 122.3 (MC MINNVILLE RADIO)

® SEATTLE CENTER APP/DEP CON 127.55

**CLEARANCE DELIVERY PHONE:** For CD if una to ctc on FSS freq, ctc Seattle

ARTCC at 253-351-3694.

**RADIO AIDS TO NAVIGATION:** NOTAM FILE MMV.

(L) (L) VORW/DME 108.2 RBG Chan 19 N43°10.94'

W123°21.13' 337° 3.4 NM to fld. 1309/20E.

DME unusable:

070°-130° byd 20 NM blo 8,000'

130°-190° byd 30 NM blo 7,000'

240°-320° byd 25 NM blo 5,000'

VOR unusable:

070°-130° byd 20 NM blo 8,000'

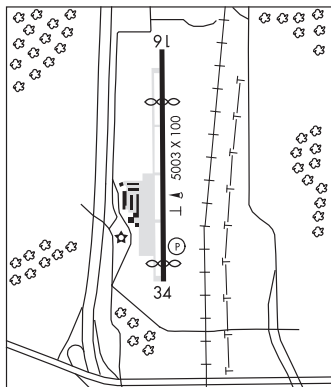
130°-150° byd 20 NM blo 7,000'

240°-290° byd 25 NM blo 5,000'

KLAMATH FALLS

H-1B, L-1A

IAP



## SALEM

**MCNARY FLD** (SLE)(KSLE) P (ARNG) 2 SE UTC-8(-7DT) N44°54.57' W123°00.15'

213 B Class I, ARFF Index B NOTAM FILE SLE MON Airport

**RWY 13-31:** H5811X150 (ASPH-GRVD) S-105, D-147, 2S-154

PCN 41 F/C/X/T HIRL 0.3% up SE

**RWY 13:** ODALS. REIL. VASI(V4L)—GA 3.0° TCH 50'. RVR-R Road.

**RWY 31:** MALSR. RVR-T Tree.

**RWY 16-34:** H5146X100 (ASPH-GRVD) S-39.5, D-52

PCN 15 F/D/X/T MIRL 0.3% up S

**RWY 16:** REIL. PAPI(P4L)—GA 3.0° TCH 38'. Road.

**RWY 34:** REIL. PAPI(P4L)—GA 4.0° TCH 42'. Tree.

### LAND AND HOLD—SHORT OPERATIONS

LDG RWY	HOLD—SHORT POINT	AVBL LDG DIST
RWY 31	16-34	3150
RWY 34	13-31	3050

### RUNWAY DECLARED DISTANCE INFORMATION

**RWY 13:** TORA-5811 TODA-5811 ASDA-5811 LDA-5811

**RWY 16:** TORA-5145 TODA-5145 ASDA-5145 LDA-5145

**RWY 31:** TORA-5811 TODA-5811 ASDA-5811 LDA-5811

**RWY 34:** TORA-5145 TODA-5145 ASDA-5145 LDA-5145

**SERVICE:** S4 FUEL 100LL, JET A OX1, 3 LGT When ATCT clsd

ACTVT MALSR Rwy 31; ODALS Rwy 13; REILS Rwy 13, Rwy 16-34;

HIRL Rwy 13-31, MIRL Rwy 16-34—CTAF. REILS Rwy 16 OTS

indefly; PAPI Rwy 16 and Rwy 34 OTS indefly; bcn OTS indefly.

**MILITARY—FUEL** (NC-100LL)—Self svc avbl H24. A—Avbl after bus hr with PN C503-508-4178/593-364-0111.)

**NOISE:** Ns abtmt procs in efct. Avd ovr flt of srmg resl areas when poss.

**AIRPORT REMARKS:** Attended Mon-Fri 1500-0300Z†, Sat-Sun 1500-0100Z†. Bird haz, heavy concentration waterfowl

adjacent to arpt and apchs to all rwys. Flocks of geese concentrated transiting Class D airspace at tfc pat alt Oct-May. Self

fueling, 100LL only, avbl 24 hrs a day. Jet A avbl aft nml bus hrs with advnd notice at 503-508-4178 or

503-364-4158. Airfield conds not mntd btn 1600-0800Z† and all times Sat and Sun. Arpt clsd aft heavy snwfl. Rsg

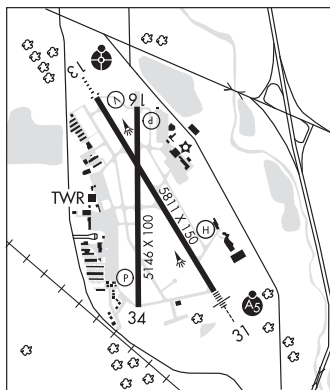
trm and trees W and S of arpt, inclg extd cntrln of Rwy 34. Trees on extd cntrln of Rwy 16. Ngt ops not rcmd both rwys.

PPR for unscheduled air carrier ops with more than 30 pax seats, call arpt mgr on 503-588-6314. PPR rqd for prkg acft

on acr ramp. Call amgr 503-588-6314. Acft prkg on S G/A ramp ltd to acft under 12,500 lbs. Twy A from Twy L to Twy

L9 not visible from twr.

**AIRPORT MANAGER:** (503) 589-2057



SEATTLE

H-1B, L-1B

IAP, AD

CONTINUED ON NEXT PAGE

NW, 31 OCT 2024 to 26 DEC 2024

CONTINUED FROM PRECEDING PAGE

WEATHER DATA SOURCES: ASOS 124.55 (503) 371-1062.

COMMUNICATIONS: CTAF 119.1 ATIS 124.55 UNICOM 122.95

SALEM RCO 122.6 (MC MINNVILLE RADIO)

Ⓡ SEATTLE CENTER APP/DEP CON 125.8

SALEM TOWER 119.1 (1500-0500Z‡) GND CON 121.9

CLEARANCE DELIVERY PHONE: For CD if una to ctc on FSS freq, ctc Seattle ARTCC at 253-351-3694.

AIRSPACE: CLASS D svc 1500-0500Z‡; other times CLASS E.

RADIO AIDS TO NAVIGATION: NOTAM FILE MMV.

NEWBERG (VH) (DH) VOR/DME 117.4 UBG Chan 121 N45°21.19' W122°58.69' 161° 26.6 NM to fld.  
1443/21E.

VOR unusable:

- 095°-105° byd 40 NM
- 106°-120° byd 40 NM blo 7,800'
- 106°-120° byd 60 NM
- 135°-328° byd 40 NM
- 329°-346° byd 40 NM blo 5,000'
- 329°-346° byd 70 NM
- 347°-080° byd 40 NM

TURN0 NDB (LOM) 266 SL N44°50.85' W122°57.06' 312° 4.3 NM to fld.

ILS/DME 110.3 I-SLE Chan 40 Rwy 31. Class IT. LOM TURN0 NDB.



HELIPAD H1: H37X37 (CONC)

---

SALEM N44°55.14' W123°00.54'

SEATTLE

RCO 122.6 (MC MINNVILLE RADIO)

L-1B

---

SALMON BAR (See IMNAHA on page 178)

---

**SANDY**

COUNTRY SQUIRE AIRPARK (S48) 3 S UTC-8(-7DT) N45°21.27' W122°16.08'

SEATTLE

1175 NOTAM FILE MMV

L-1B

RWY 07-25: H3095X32 (ASPH) S-7

RWY 25: Tree.

AIRPORT REMARKS: Attended irregularly. Deer on and invof arpt. Rwy 07-25 magnetic heading 080°-260°. Ldg fee. Overnight tiedown fee and ldg fee for non based acft.

AIRPORT MANAGER: 503-668-6808

COMMUNICATIONS: CTAF 122.9

CLEARANCE DELIVERY PHONE: For CD ctc Portland Apch at 503-493-7545.

CONTINUED ON NEXT PAGE