

FORT BRIDGER (FBR)(KFBR) 4 N UTC-7(-6DT) N41°23.60' W110°24.36'

SALT LAKE CITY

7038 B NOTAM FILE CPR

H-3E, L-11D

RWY 04-22: H6404X75 (ASPH) S-12.5, D-20, 2D-20 MIRL

IAP

0.5% up SW

RWY 04: REIL. PAPI(P2L)—GA 3.0° TCH 40'.**RWY 22:** REIL. PAPI(P2L)—GA 3.0° TCH 40'.**RWY 07-25:** 3520X50 (TURF-DIRT) 0.3% up SW**RWY 07:** Fence.**SERVICE:** FUEL 100LL LGT ACTVT PAPI Rwy 04 and 22; REIL Rwy 04 and 22; MIRL Rwy 04-22—CTAF.**AIRPORT REMARKS:** Unattended. For svc aft hrs call 307-799-5513.

Numerous prairie dog holes, sage brush and depressions on sfc. Fuel avbl by H24 via credit card. Rwy 04-22 plowed winter months; Rwy 07-25 clsd winter months except for ski equip acct; dirt/turf rwys not maintained.

AIRPORT MANAGER: 307-783-0507**WEATHER DATA SOURCES:** AWOS-3PT 118.8 (307) 782-3226.**COMMUNICATIONS:** CTAF/UNICOM 122.8

RCO 122.3 (CASPER RADIO)

Ⓡ SALT LAKE CENTER APP/DEP CON 124.35

CLEARANCE DELIVERY PHONE: For CD if una to ctc on FSS freq, ctc Salt Lake ARTCC at 801-320-2568.**RADIO AIDS TO NAVIGATION:** NOTAM FILE CPR.

(VL) (DH) VOR/DME 114.45 FBR Chan 91(Y) N41°22.71' W110°25.44' 028° 1.2 NM to fld. 7058/14E.

VOR unusable:

129°-207° byd 40 NM

208°-218° byd 40 NM blo 14,000'

208°-218° byd 69 NM

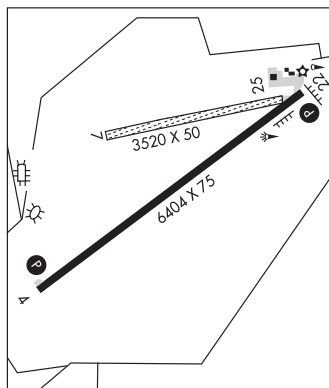
219°-226° byd 40 NM

227°-237° byd 40 NM blo 12,000'

227°-237° byd 65 NM

245°-257° byd 40 NM blo 12,000'

245°-257° byd 56 NM

**GILLETTE****NORTHEAST WYOMING RGNL** (GCC)(KGCC) 4 NW UTC-7(-6DT) N44°20.93' W105°32.36'

CHEYENNE

4365 B TPA—See Remarks Class I, ARFF Index A NOTAM FILE GCC

H-1F, 2G, L-12F, 13E

RWY 16-34: H7501X150 (CONC-GRVD) S-70, D-110, 2S-139,

IAP, AD

2D-160 PCN 35 R/C/W/T HIRL 0.4% up SE

RWY 16: REIL. PAPI(P4L)—GA 3.17° TCH 43'. Road.**RWY 34:** MALSR. PAPI(P4L)—GA 3.2° TCH 56'. P-line.**RWY 03-21:** H5804X75 (CONC-GRVD) S-40, D-60 PCN 13 R/D/W/T

MIRL 0.4% up SW

RWY 03: REIL. PAPI(P4L)—GA 4.0° TCH 41'.**RWY 21:** REIL. PAPI(P4L)—GA 4.0° TCH 39'.**RUNWAY DECLARED DISTANCE INFORMATION****RWY 03:** TORA-5803 TODA-5803 ASDA-5803 LDA-5803**RWY 16:** TORA-7500 TODA-7500 ASDA-7500 LDA-7500**RWY 21:** TORA-5803 TODA-5803 ASDA-5803 LDA-5803**RWY 34:** TORA-7500 TODA-7500 ASDA-7500 LDA-7500**SERVICE:** S4 FUEL 100LL, JET A OX1, 2 LGT ACTVT MALSR Rwy

34; REILS Rwys 03, 16 and 21; HIRL Rwy 16-34, MIRL Rwy

03-21—CTAF. Sequence flashers Rwy 34 avbl on high setting only.

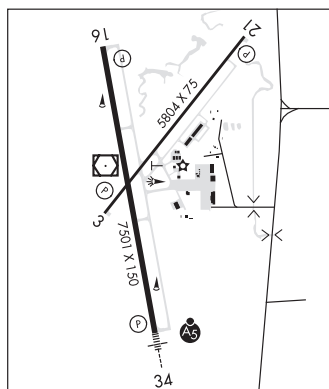
PAPI Rwys 03, 16, 21, 34 opr consly.

AIRPORT REMARKS: Attended 1200-0700Z±. Conds unmon. 24 hr self svc credit card fuel avbl. Migratory waterfowl invof arpt. Mining/blasting opns 1/2 mile NE AER 21 dur dalgt hrs. TPA-5165(800) for light acct, 5565(1200) for large acct. PPR unscheduled air carrier ops with more than 30 pax seats call arpt mgr 307-686-1042. Opn on unpaved sfcfs prohibited.

AIRPORT MANAGER: 307-686-1042**WEATHER DATA SOURCES:** ASOS 124.175 (307) 682-1712.**COMMUNICATIONS:** CTAF 118.5 UNICOM 122.95

GILLETTE RCO 122.3 (CASPER RADIO)

Ⓡ DENVER CENTER APP/DEP CON 135.6

CLEARANCE DELIVERY PHONE: For CD ctc Denver ARTCC at 303-651-4257.

CONTINUED ON NEXT PAGE

NW, 31 OCT 2024 to 26 DEC 2024

CONTINUED FROM PRECEDING PAGE

AIRSPACE: CLASS E svc 1300-0600Z†; other times CLASS G.

RADIO AIDS TO NAVIGATION: NOTAM FILE GCC.

GILLETTE (VH) (H) VOR/DME 114.6 GCC Chan 93 N44°20.87' W105°32.61' at fld. 4336/9E.

VOR unusable:

053°-157° byd 40 NM
 158°-168° byd 40 NM blo 10,000'
 158°-168° byd 56 NM
 169°-188° byd 40 NM
 189°-199° byd 40 NM blo 8,500'
 189°-199° byd 46 NM
 200°-238° byd 40 NM
 253°-278° byd 20 NM blo 8,000'
 259°-279° byd 40 NM
 280°-320° byd 40 NM

DME unusable:

163°-193° byd 25 NM blo 10,300'
 193°-268° byd 20 NM blo 8,000'
 193°-268° byd 30 NM blo 13,000'
 268°-333° byd 22 NM blo 10,500'

DERYK NDB (MHW/LOM) 380 GC N44°16.25' W105°31.33' 342° 4.7 NM to fld. 4674/9E. NDB unmonitored
 0500-1300Z†.

ILS/DME 110.1 I-LLT Chan 38 Rwy 34. Class IE. LOM DERYK NDB. Glideslope unusable byd 8 NM. Unmonitored
 when ATCT clsd.

GLENDO

THOMAS MEML (76V) 1 N UTC-7(-6DT) N42°31.20' W105°01.20'

CHEYENNE

4666 NOTAM FILE CPR

RWY 16-34: 4397X70 (TURF-DIRT)

RWY 16: Tree.

RWY 34: Road.

AIRPORT REMARKS: Unattended. Ctc town hall 307-735-4242 or arpt mgr 307-331-5005 prior to use for sfc cond. Ocnl antelope on rwy. First 500 ft Rwy 34 end very rough. Rwy 16-34 mowed natural grass. Rwy 16-34 muddy, slick and soft when wet, ocnl gopher holes. Unrestricted vehicle access.

AIRPORT MANAGER: 307-298-7397

COMMUNICATIONS: CTAF 122.9

CLEARANCE DELIVERY PHONE: For CD ctc Denver ARTCC at 303-651-4257.

GREEN RIVER

GTR GREEN RIVER INTERGALACTIC SPACEPORT (48U) 4 S UTC-7(-6DT) N41°27.48'

SALT LAKE CITY

W109°29.41'

7182 NOTAM FILE CPR

RWY 04-22: 5652X75 (DIRT)

AIRPORT REMARKS: Unattended. No snow removal avbl. Rwy soft when wet. Rwy 04 rwy end and edge delineated using cone mks. Rwy 22 rwy end and edge delineated using cone mks.

AIRPORT MANAGER: 307-872-0525

COMMUNICATIONS: CTAF 122.9

CLEARANCE DELIVERY PHONE: For CD ctc Salt Lake ARTCC at 801-320-2568.