

JACKSON

HAWKINS FLD (HKS)(KHKS) P (ARNG) 3 NW UTC-6(-5DT) N32°20.09' W90°13.35'

341 B NOTAM FILE HKS

RWY 16-34: H5387X150 (ASPH-GRVD) S-30, D-40, 2D-80 HIRL

0.7% up NW

RWY 16: MALSR. PAPI(P4L)—GA 3.0° TCH 57'.

RWY 34: REIL. Trees.

RWY 11-29: H3431X150 (CONC) S-30, D-40, 2D-80 MIRL

0.3% up SE

RWY 11: P-line.

RWY 29: Trees.

RUNWAY DECLARED DISTANCE INFORMATION

RWY 11: TORA-4021 TODA-4400 ASDA-4250 LDA-3431

RWY 29: TORA-3810 TODA-4400 ASDA-3810 LDA-3431

SERVICE: S4 **FUEL** 100LL, JET A+ **LGT** Actvt MALSR Rwy 16; REIL Rwy 34; HIRL Rwy 16-34—CTAF. MIRL Rwy 11-29 ATCT—Cti. When ATCT clsd MIRL Rwy 11-29 unavbl. S Apr not lgttd.

MILITARY—FUEL A+ (avbl 1200-0200Z‡, Mon-Fri, 1300-0100Z‡, Sat-Sun, C800-521-4106, OT 30 min PN rqr, C601-948-8778. \$60 svc fee.) (NC-100LL)

AIRPORT REMARKS: Attended 1300-0300Z‡. Twys F and G clsd indef.

PAEW rwys nightly by NOTAM. Pilots must provide their own tiedown ropes.

MILITARY REMARKS: ARNG OPS 1300-2230Z‡. **ARNG** DSN 293-2117, C601-313-2117.

AIRPORT MANAGER: (601) 939-5631

WEATHER DATA SOURCES: ASOS 120.625 (601) 354-4037.

COMMUNICATIONS: CTAF 119.65 **UNICOM** 122.95

Ⓡ **JACKSON APP/DEP CON** 123.9 (333°-152°) 125.25
(153°-332°)(1200-0500Z‡)

Ⓡ **MEMPHIS CENTER APP/DEP CON** 132.5 (0500-1200Z‡)

TOWER 119.65 (1300-0300Z‡) **GND CON** 121.9

JACKSON CLNC DEL 121.9

CLEARANCE DELIVERY PHONE: When Apch clsd, for CD ctc Memphis ARTCC at 901-368-8453/8449.

AIRSPACE: CLASS D svc 1300-0300Z‡; other times CLASS G.

RADIO AIDS TO NAVIGATION: NOTAM FILE GWO.

MAGNOLIA (VH) (H) VORTACW 113.2 MHz Chan 79 N32°26.04' W90°05.99' 227° 8.6 NM to fld. 407/1W.

TACAN AZIMUTH unusable:

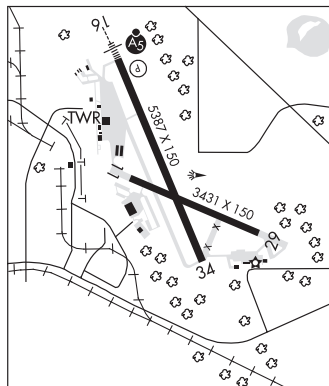
240°-275° byd 30 NM blo 2,000'

DME unsl 240-275 byd 30 NM blo 2000'

BRENZ NDB (MHW/LOM) 260 JH N32°24.78' W90°15.68' 157° 5.1 NM to fld. 314/0W. NOTAM FILE HKS.

NDB unmonitored when ATCT clsd.

ILS 111.7 I-JHF Rwy 16. Class IT. LOM BRENZ NDB. Unmonitored when ATCT clsd. Marker/NDB JH unmonitored when ATCT clsd.



MEMPHIS
H-6J, L-18G
IAP, AD