

**COLEMAN MUNI** (COM)(KCOM) 2 NE UTC-6(-5DT) N31°50.47' W99°24.22'

SAN ANTONIO

1697 B NOTAM FILE FTW

L-19B

**RWY 15-33:** H4506X75 (ASPH) S-12.5 MIRL 0.4% up NW

IAP

**RWY 15:** Road.

**RWY 33:** Trees.

**SERVICE:** S4 **FUEL** 100LL, **JET A** **LGT** Rwy 15-33 MIRL preset to low, to incr ints and **ACTIVATE**—CTAF.

**AIRPORT REMARKS:** Attended Mon-Fri 1400-2300Z†. Employee lives on premises. Rwy 15-33 nmrs cracks and pavement spalling.

**AIRPORT MANAGER:** 325-625-5495

**WEATHER DATA SOURCES:** AWOS-3PT 119.1 (325) 625-3563.

**COMMUNICATIONS:** CTAF/UNICOM 122.8

Ⓡ **FORT WORTH CENTER APP/DEP CON** 127.45

**CLEARANCE DELIVERY PHONE:** For CD ctc Fort Worth ARTCC at 817-858-7584.

**RADIO AIDS TO NAVIGATION:** NOTAM FILE ABI.

**ABILENE (VH) (H) VORTACW** 113.7 ABI Chan 84 N32°28.88'

W99°51.81' 138° 44.9 NM to fld. 1809/10E.

VOR unusable:

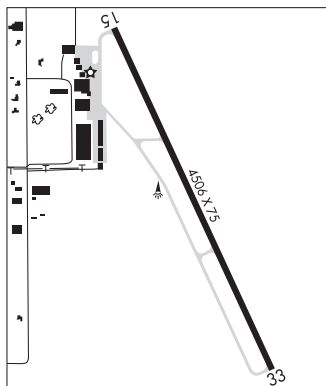
163°-236° byd 40 NM blo 18,000'

237°-247° byd 40 NM blo 7,000'

248°-250° byd 40 NM blo 18,000'

251°-255° byd 40 NM blo 4,500'

251°-255° byd 46 NM blo 18,000'



## COLLEGE STATION

**EASTERWOOD FLD** (CLL)(KCLL) 3 SW UTC-6(-5DT) N30°35.28' W96°21.75'

HOUSTON

321 B Class I, ARFF Index B NOTAM FILE CLL

H-7C, L-19D, 21A

**RWY 17-35:** H7000X146 (ASPH-CONC-GRVD) S-78, D-94, 2D-156

IAP, AD

PCR 300 R/D/W/T HIRL

**RWY 17:** VASI(V4R)—GA 3.0° TCH 51'. Tree.

**RWY 35:** MALSR.

**RWY 11-29:** H5158X150 (ASPH-GRVD) S-37, D-49

PCR 570 F/D/X/T MIRL

**RWY 11:** VASI(V4L)—GA 3.0° TCH 50'. Tree.

**RWY 29:** REIL. VASI(V4L)—GA 3.0° TCH 54'. Tree.

### RUNWAY DECLARED DISTANCE INFORMATION

**RWY 11:** TORA-5158 TODA-5158 ASDA-5158 LDA-5158

**RWY 17:** TORA-7000 TODA-7000 ASDA-7000 LDA-7000

**RWY 29:** TORA-5158 TODA-5158 ASDA-5158 LDA-5158

**RWY 35:** TORA-7000 TODA-7000 ASDA-6932 LDA-6932

**SERVICE:** S4 **FUEL** 100LL, **JET A**, A+ **LGT** When twr clsd **ACTIVATE**

MALSR Rwy 35; MIRL Rwy 11-29; HIRL Rwy 17-35—CTAF. REIL

Rwy 29 preset low ints only.

**AIRPORT REMARKS:** Attended 1200-0400Z†. 100LL svc 1200-0400Z†.

For fuel aft hrs PPR call 979-775-5255. Late night fee. CLOSED to

unscheduled air carrier ops with more than 30 passenger seats except

24 hours PPR call arpt manager 979-775-9920. Turn fee skedd FAR

135 and all FAR 121 opns. Rwy 17-35 first 1850' Rwy 35 conc. PAEW adjacent all rwys and twys 1200-2200Z†.

Surface conditions not reported from 2300-1100Z† (1700-0500 local) Mon-Fri & Sat-Sun. All rapid rfl mil Hel adz ATC

for rapid rfl ops & procd to south ramp. Ctc UNICOM 122.95 for svc prior to Indg. Rapid rfl is avbl 1200-0400Z† dly.

Spl rqs csdrd on case by case basis.

**AIRPORT MANAGER:** 979-775-9901

**WEATHER DATA SOURCES:** ASOS (979) 846-1708

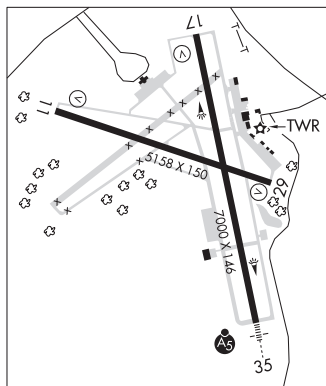
**COMMUNICATIONS:** CTAF 118.5 ATIS 126.85 UNICOM 122.95

**COLLEGE STATION RCO** 122.2 (MONTGOMERY COUNTY RADIO).

Ⓡ **HOUSTON APP/DEP CON** 134.3

**TOWER** 118.5 (1400-0300Z†) **GND CON/CLNC DEL** 128.7 **CLNC DEL** 120.4 (when twr clsd)

**CLEARANCE DELIVERY PHONE:** For CD if una to ctc on FSS freq, ctc Houston ARTCC at 281-230-5622.



CONTINUED ON NEXT PAGE

CONTINUED FROM PRECEDING PAGE

AIRSPACE: CLASS D svc 1400-0300Z; other times CLASS E.

RADIO AIDS TO NAVIGATION: NOTAM FILE CLL.

COLLEGE STATION (L) (L) VORTACW 113.3 CLL Chan 80 N30°36.30' W96°25.24' 101° 3.2 NM to fld. 264/8E.

TACAN unusable:

- 101°-130° byd 25 NM blo 2,500'
- 131°-148° byd 30 NM blo 2,500'
- 149°-160° byd 30 NM blo 2,000'
- 325°-349° byd 30 NM blo 2,500'
- 350°-100° byd 25 NM blo 3,500'

VOR unusable:

- 024°-034° blo 4,000'
- 024°-034° byd 20 NM
- 131°-142° blo 7,000'
- 142°-152° byd 30 NM
- 152°-189° blo 7,000'

ROWDY NDB (LOM) 260 CL N30°29.62' W96°20.26' 344° 5.8 NM to fld. LOM unmonitored.

ILS/DME 110.55 I-CLL Chan 42(Y) Rwy 35. Class IE. LOM ROWDY NDB. Unmonitored when ATCT clsd. DME unmonitored. Glideslope unusable for coupled apchs blo 1,050' MSL. LOM unmonitored.

COMM/NAV/WEATHER REMARKS: All acft prkg on SE ramp must ctc for svc or trnsp, UNICOM 122.95 or 979-775-5255.

**COLLINSVILLE**

**SUDDEN STOP** (T32) 1 NE UTC-6(-5DT) N33°34.29' W96°54.43'

DALLAS-FT WORTH

720 NOTAM FILE FTW

RWY 17-35: 1550X60 (TURF)

RWY 17: Trees.

RWY 35: Road.

AIRPORT REMARKS: Attended continuously. Student training prohibited. Rwy soft when wet. Call to confirm cond. Rwy 17-35 thlds unmarked.

AIRPORT MANAGER: 903-429-6343

COMMUNICATIONS: CTAF 122.9

CLEARANCE DELIVERY PHONE: For CD ctc Fort Worth ARTCC at 817-858-7584.

**COLONEL BOBBY WADDLE/DESOTO HELIPORT** (See DESOTO on page 298)

**COLORADO CITY** (T88) 6 NW UTC-6(-5DT) N32°28.11' W100°55.27'

DALLAS-FT WORTH

2214 B NOTAM FILE FTW

H-6G, L-17A

RWY 17-35: H5479X60 (ASPH) S-50 RWY LGTS(NSTD)

SERVICE: LGT Rwy 17-35 NSTD low intst; lgts 40 ft fm rwy edges.

AIRPORT REMARKS: Attended irregularly. Rwy 17-35 pavement fm Rwy 35 thr lgts south not maintained. Rwy 17-35 markings no centerline.

AIRPORT MANAGER: 325-728-3464

COMMUNICATIONS: CTAF 122.9

CLEARANCE DELIVERY PHONE: For CD ctc Fort Worth ARTCC at 817-858-7584.

RADIO AIDS TO NAVIGATION: NOTAM FILE BPG.

BIG SPRING (VL) (H) VORTACW 117.2 BGS Chan 119 N32°23.14' W101°29.02' 069° 29.0 NM to fld. 2670/11E.

