

GRAHAM MUNI (RPH)(KRPH) 2 E UTC-6(-5DT) N33°06.64' W98°33.29'
 1123 B NOTAM FILE RPH
RWY 03-21: H5000X75 (ASPH) S-12 MIRL
RWY 03: PAPI(P2L)—GA 3.0° TCH 40'. Trees.
RWY 21: PAPI(P2R)—GA 3.0° TCH 40'. Trees.
RWY 18-36: H3317X50 (ASPH) S-8 0.4% up S
RWY 18: Thld dsplcd 639'. Road.
RWY 36: Road.

SERVICE: S4 **FUEL** 100LL, JET A, A+ **LGT** MIRL Rwy 03-21 SS-SR
 preset to low, to incr instst ACTVT—CTAF.

AIRPORT REMARKS: Attended Mon-Fri 1400-2300Z. Wildlife on and in/ov
 arpt. Call prior to arrival for hangar availability at 940-549-6150.

AIRPORT MANAGER: 940-549-6150

WEATHER DATA SOURCES: AWOS-3P 118.025 (940) 521-0685.

COMMUNICATIONS: CTAF/UNICOM 122.975

Ⓡ **FORT WORTH CENTER APP/DEP CON** 127.0

CLEARANCE DELIVERY PHONE: For CD ctc Fort Worth ARTCC at
 817-858-7584.

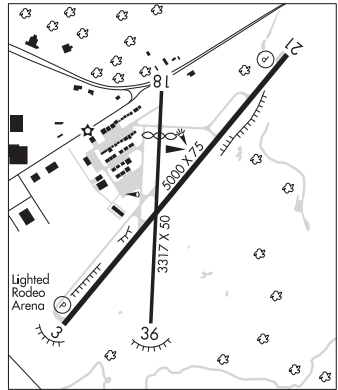
RADIO AIDS TO NAVIGATION: NOTAM FILE FTW.

MILLSAP (VH) (H) VORTACW 117.7 MQP Chan 124 N32°43.57'
 W97°59.85' 300° 36.4 NM to fld. 900/9E.

VOR unusable:

- 004°-009° byd 40 NM
- 010°-054° byd 40 NM blo 3,800'
- 010°-054° byd 46 NM blo 5,000'
- 010°-054° byd 56 NM
- 055°-066° byd 40 NM blo 3,800'
- 055°-066° byd 50 NM
- 230°-247° byd 40 NM
- 248°-258° byd 40 NM blo 3,700'
- 248°-258° byd 53 NM
- 259°-270° byd 40 NM blo 6,000'
- 259°-270° byd 63 NM
- 271°-285° byd 40 NM
- 312°-316° byd 40 NM
- 325°-340° byd 40 NM blo 3,000'
- 325°-340° byd 46 NM blo 5,000'
- 325°-340° byd 66 NM
- 353°-003° byd 40 NM blo 18,000'

DALLAS-FT WORTH
H-6H, L-17B
IAP



GRANBURY RGNL (GDJ)(KGDJ) 2 W UTC-6(-5DT) N32°26.58' W97°49.28'
 835 B NOTAM FILE GDJ
RWY 01-19: H5201X75 (CONC) MIRL 1.0% up S
RWY 01: PAPI(P2L)—GA 3.0° TCH 40'.

RWY 19: PAPI(P2L)—GA 3.0° TCH 40'. Rgt tfc.

SERVICE: S4 **FUEL** 100LL, JET A+ **LGT** MIRL Rwy 01-19 preset low
 intst; to incr instst ACTVT—CTAF.

AIRPORT REMARKS: Attended 1300-0100Z. 100LL 24 hr self serve. For
 Jet A aft hrs call 817-579-8533 durg ofc hrs. Jet A+, only Jet A with
 prist additive is available. Overnight tie-down fee waived with fuel
 purchase.

AIRPORT MANAGER: 817-579-8533

WEATHER DATA SOURCES: AWOS-3T 118.925 (817) 573-7514.

COMMUNICATIONS: CTAF/UNICOM 123.0

Ⓡ **FORT WORTH CENTER APP/DEP CON** 127.15

CLEARANCE DELIVERY PHONE: For CD ctc Fort Worth ARTCC at
 817-858-7584.

RADIO AIDS TO NAVIGATION: NOTAM FILE FTW.

GLEN ROSE (L) TACAN Chan 97 JEN (115.0) N32°09.58'
 W97°52.66' 004° 17.2 NM to fld. 1300/6E.

DALLAS-FT WORTH
L-17C, A
IAP

