

**HORSESHOE BAY RESORT (DZB)(KDZB) 0 N UTC-6(-5DT) N30°31.62' W98°21.53'**SAN ANTONIO  
H-7B, L-19C

1093 B NOTAM FILE SJT

RWY 17-35: H5977X100 (ASPH) D-100 HIRL

RWY 17: Thld dsplcd 300'.

RWY 35: Tree. Rgt tfc.

SERVICE: FUEL 100LL, JET A+ OX 1, 2, 3, 4 LGT HIRL Rwy 17-35 preset low intst; to incr intst ACTVT—CTAF. Rotg bcn oprs 24/7.

AIRPORT REMARKS: Attended 1300—0100Z. Deer invof of rwy. Rwy 35 rgt tfc not mkd on gnd. Rwy 17 ft drop off. TGL and trng flights prohibited. Rwy 17 preferred for dep. Rwy 17 35 ft pline, 375 ft R of cntrln, parl to Rwy 17 end north 3600 ft.

AIRPORT MANAGER: 830-598-6386

WEATHER DATA SOURCES: AWOS-3 119.775 (830) 598-2059.

COMMUNICATIONS: CTAF/UNICOM 122.8

CLEARANCE DELIVERY PHONE: For CD ctc Houston ARTCC at 281-230-5622.

RADIO AIDS TO NAVIGATION: NOTAM FILE T82.

STONEWALL (VH) (H) VORTAC 113.8 STV Chan 85 N30°12.41' W98°42.35' 035° 26.3 NM to fld. 1530/8E.

TACAN AZIMUTH unusable:

056°-066° byd 30 NM blo 3,000'

067°-055° byd 30 NM blo 3,300'

DME unusable:

056°-066° byd 30 NM blo 3,000'

067°-055° byd 30 NM blo 3,300'

VOR unusable:

056°-066° byd 30 NM blo 3,000'

067°-055° byd 30 NM blo 3,300'

110°-122° byd 40 NM blo 5,500'

110°-122° byd 46 NM

123°-210° byd 40 NM

230°-240° byd 40 NM

**HORSESHOE BEND** (See WEATHERFORD on page 444)**HOUSTON****CONROE/NORTH HOUSTON RGNL (CXO)(KCXO) P (AR) 37 N UTC-6(-5DT) N30°21.20'**HOUSTON  
H-7C, L-19D, 21A, GOMW  
IAP, AD

W95°24.90'

245 B NOTAM FILE CXO

RWY 14-32: H7501X150 (CONC) S-60, D-100 PCN 36 R/B/W/T HIRL

RWY 14: MALSR. PAPI(P4L)—GA 3.0° TCH 47'. Trees.

RWY 32: REIL. PAPI(P2L)—GA 3.0° TCH 50'.

RWY 01-19: H5000X100 (CONC) S-30, D-75, 2S-95 MIRL

RWY 01: PAPI(P2L)—GA 3.15° TCH 49'. Trees.

RWY 19: PAPI(P2L)—GA 3.0° TCH 49'. Trees.

**RUNWAY DECLARED DISTANCE INFORMATION**

RWY 01: TORA-5000 TODA-5000 ASDA-5000 LDA-5000

RWY 19: TORA-5000 TODA-5000 ASDA-5000 LDA-5000

SERVICE: S4 FUEL 100LL, JET A OX 3, 4 LGT HIRL Rwy 14-32 preset low intst; to incr intst and actvt REIL Rwy 32—CTAF.

MILITARY— FUEL A+ (1200-0300Z, C936-494-4252)

NOISE: Avoid noise sensitive area 10 miles SW quad of arpt.

AIRPORT REMARKS: Attended Mon-Fri 1400-2300Z, Sat-Sun

1400-2200Z. Extv mil hel actvy on arpt. Hcls use right-hand tfc. Extv student pilot (sunrise to sunset). User fee arpt: Intl arpt U.S. Cust user fee arpt. Call U.S. Cust 936-441-7750.

AIRPORT MANAGER: 936-788-8311

WEATHER DATA SOURCES: ASOS (936) 760-4237

COMMUNICATIONS: CTAF 124.125 ATIS 118.325

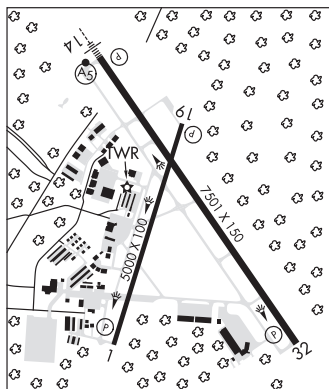
MONTGOMERY COUNTY RCO 122.2 (MONTGOMERY COUNTY RADIO)

® HOUSTON APP/DEP CON 119.7

TOWER 124.125 (1200-0300Z) GND CON 120.45

CLNC DEL 120.45 119.55 (when twr clsd)

CLEARANCE DELIVERY PHONE: For CD when ATCT clsd ctc Houston Apch at 281-443-5844, to cnl IFR at 281-443-5888.



CONTINUED ON NEXT PAGE

## CONTINUED FROM PRECEDING PAGE

AIRSPACE: CLASS D svc 1200-0300Z†; other times CLASS E.

RADIO AIDS TO NAVIGATION: NOTAM FILE IAH.

**HUMBLE (H) (H) VORTACW** 116.6 IAH Chan 113 N29°57.42' W95°20.74' 346° 24.0 NM to fld. 81/5E.

VORTAC monitored by ATCT

VOR portion unusable:

060°-070° byd 35 NM

175°-185° byd 20 NM blo 3,000'

Byd 30 NM blo 2,000'

DME unusable:

015°-090° byd 30 NM blo 2,000'

130°-320° byd 30 NM blo 2,000'

175°-185° byd 20 NM blo 3,000'

230°-250°

TACAN AZIMUTH unusable:

040°-055° blo 5,000'

150°-320° blo 4,500'

150°-320° byd 10 NM

**ALIBI NDB (LOMW)** 281 CX N30°25.92' W95°28.58' 141° 5.7 NM to fld. 371/5E. NOTAM FILE CXO.

**ILS/DME** 108.7 I-CXO Chan 24 Rwy 14. Class IA. LOM ALIBI NDB.

**DAN JONES INTL** (T51) 22 NW UTC-6(-5DT) N30°02.57' W95°40.03'

166 B NOTAM FILE CXO

**HOUSTON**

**COPTER**

**RWY 17-35:** H3440X50 (ASPH-TURF) LIRL(NSTD)

**L-19D, 21A, GOMW**

**RWY 17:** Thld dspclcd 255'. Tree.

**RWY 35:** Thld dspclcd 380'. P-line.

**SERVICE:** S4 **FUEL** 100LL **LGT** SS-SR, ACTIVATE LIRL Rwy 17-35—CTAF. For rotating bcn call 936-521-9887. Rwy 17-35 NSTD LIRL, NSTD colors, single thr lgt each rwy end. 2240 ft of rwy usbl for ngt opns. Rwy 17 thr relctd 300 ft for ngt opns. Rwy 35 thr relctd 900' ft for ngt opns.

**AIRPORT REMARKS:** Attended dawn to 0600Z†. Arpt CLOSED midnight to dawn. Deer on rwys. Cattle invof rwy. PPR for rotor wing acft. Rwy 17 thr bar 2 ft wide. Rwy 17-35 north end 2365 ft X 30 ft asph. Rwy 17 thr dspclcd 255 ft days only. Rwy 35 thr dspclcd 400 ft days only. Rwy 17-35 4 ft fence 53 ft east of cntrin. Left hand tfc 500' and 1000' MSL. North-south transitional acft west of fld. Ldg fee.

**AIRPORT MANAGER:** 936-521-9887

**COMMUNICATIONS:** CTAF/UNICOM 122.8

**CLEARANCE DELIVERY PHONE:** For CD ctc Houston Apch at 281-443-5844 to cnl IFR call 281-443-5888.

**RADIO AIDS TO NAVIGATION:** NOTAM FILE CXO.

**NAVASOTA (VH) (H) VORW/DME** 115.9 TNV Chan 106 N30°17.31' W96°03.49' 118° 25.1 NM to fld. 247/8E.

DME unusable:

005°-072° byd 18 NM blo 3,000'

073°-077° byd 18 NM blo 2,000'

078°-106° byd 18 NM blo 3,000'

VOR unusable:

000°-039° byd 18 NM blo 3,000'

025°-085° byd 40 NM

040°-090°

086°-145° byd 18 NM blo 6,000'

091°-145° byd 35 NM

146°-359° byd 18 NM blo 2,000'

215°-230° byd 40 NM

240°-255° byd 40 NM blo 2,100'

240°-255° byd 52 NM

256°-260° byd 40 NM

261°-271° byd 39 NM blo 5,000'

261°-271° byd 59 NM blo 7,000'

261°-271° byd 82 NM

272°-328° byd 40 NM

329°-339° byd 40 NM blo 5,000'

329°-339° byd 61 NM blo 6,000'

329°-339° byd 83 NM

340°-005° byd 40 NM