

ELLINGTON (EFD)(KEFD) P (ANG CG NASA ARNG) 15 SE UTC-6(-5DT) N29°36.44' W95°09.53'

HOUSTON COPTER
H-7C, L-19E, 21A, GOMW
IAP, AD

33 B TPA—See Remarks LRA Class IV, ARFF Index A NOTAM FILE EFD

RWY 17R-35L: H9001X150 (CONC-GRVD) S-100, D-190, 2S-175, 2D-590, 2D/2D2-800 PCN 120R/B/W/T HIRL CL

RWY 17R: MALSF. TDZL. PAPI(P4L)—GA 3.0° TCH 48'. RVR-TR
RWY 35L: MALSF. TDZL. PAPI(P4L)—GA 3.0° TCH 32'. RVR-TR Rgt ttc.

RWY 04-22: H8001X150 (CONC-GRVD) S-100, D-164, 2S-175, 2D-300, 2D/2D2-668 PCN 110R/B/W/T HIRL CL
RWY 04: PAPI(P4L)—GA 3.0° TCH 50'. RVR-TR Rgt ttc.

RWY 22: MALSR. TDZL. PAPI(P4L)—GA 3.0° TCH 50'. RVR-TR
RWY 17L-35R: H4609X75 (CONC) S-24, D-63, 2S-80, 2D-145, 2D/2D2-300 PCN 12 R/C/W/T

RWY 35R: Rgt ttc.

RUNWAY DECLARED DISTANCE INFORMATION

RWY 04: TORA-8001	TODA-8001	ASDA-8001	LDA-8001
RWY 17L: TORA-4609	TODA-4609	ASDA-4609	LDA-4609
RWY 17R: TORA-9001	TODA-9001	ASDA-9001	LDA-9001
RWY 22: TORA-8001	TODA-8001	ASDA-8001	LDA-8001
RWY 35L: TORA-9001	TODA-9001	ASDA-9001	LDA-9001
RWY 35R: TORA-4609	TODA-4609	ASDA-4609	LDA-4609

ARRESTING GEAR/SYSTEM

RWY 17R BAK-14 BAK-12(B) (1500'). BAK-14 BAK-12(B) (1850'). **RWY 35L**

RWY 04 BAK-14 BAK-12(B) (1563').

BAK-14 BAK-12(B) (1496'). **RWY 22**

SERVICE: S4 **FUEL** 100LL, JET A **OX** 2, 4 **MILITARY—** A-GEAR Potential for tail hook skip on Rwy 17R-35L and Rwy 04-22 due to centerline lgt within 200' of Rwy A-G. A-Gear lgt rd mrk placement exceeds 75' from rwy edge. **JASU** 1(-95) 1(-86) 1(JETEX5) **FUEL** A++(Mil), A, A+, J8 (C281-484-6551.) (NC-100LL) **FLUID** LHOX HPOX

NOISE: NS ABTMT: Noise sensitive areas S and E of fld. Jet acft rstd to str-in full stop ldg only btn 0400-1300Z dly, 0400-1900Z Sun. On dep jet acft min use of after burners and climb rwy hdg to 1000' prior to turns or rejoin.

AIRPORT REMARKS: Attended continuously. Caution: nmrs small acft with extv trng in area of arpt. Nmrs birds on and invof arpt all quadrants. Be alert for mil acft at 1600' MSL making overhead apchs. Arpt clsd to acft with wingspan 171' or greater exc 24 hrs PPR 281-433-1612. 70' AGL tanks lctd 1400' northeast of Rwy 17R apch. Street lgts lctd 700' east of Rwy 17R apch may be mistaken for apch lgts. TPA—VFR rectangular 1100(1067), overhead 1600(1567), lgt acft 600(567). Twy B unlgtd east of Rwy 17R-35L, dalgt use only. Rwy 17L-35R btn Twy C and Twy G dual purpose rwy/twy with twy lgts. Parking ramp capacity TDT-710. Rwy 17R arresting barriers 1500' lctd in safety area 14" lip each side of rwy. Rwy 35L arresting barriers 1849' lctd in safety area 14" lip each side of rwy. Rwy 04 arresting barriers 1563' lctd in safety area 14" lip each side of rwy. Rwy 22 arresting barriers 1496' lctd in safety area 14" lip each side of rwy. PPR for unscheduled air carrier ops, ctc 281-433-1612. Rwy 17L-35R and Twy B east of Rwy 17R-35L not avble for air carrier acft. NSTD afld mrk on ANG acft prk aprn. Space Launch Activity Area—See Special Notices.

MILITARY REMARKS: See FLIP AP/1 Supplementary Arpt Remarks. UAS ops within Ellington Class D airspace, opr hrs vary.

ANG ramp clsd to all acft exc Official Business only. 24 hrs PPR, ctc Base OPS 1200-2130Z Tue-Fri, clsd wkend & hol. DSN 454-2142, C281-929-2142. Comd Post avbl 24 hr DSN 454-2716, C281-929-2716. All other tran acft ctc FBO 281-484-6551. BASH PHASE II cond Jun-Sep for migratory birds. BASH PHASE I Oct-May. **CG** Minimum 24 hr PPR exc CG msn, C713-578-3000.

AIRPORT MANAGER: 713-847-4200

WEATHER DATA SOURCES: AWOS-3 135.575 (713) 847-4430.

COMMUNICATIONS: ATIS 135.575 269.9 (713) 847-4430 **UNICOM** 122.95

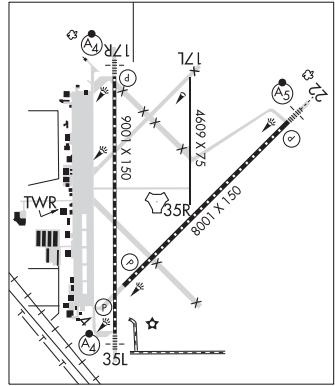
Ⓡ **HOUSTON APP/DEP CON** 134.45 284.0

TOWER 126.05 253.5 **GND CON** 121.6 275.8

ARNG OPS 41.00 (1230-2200Z Mon-Fri, prior req only) 142.2 Call Texan ops.

LONE STAR COMD POST 142.2 **ANG OPS COMD POST** 288.5

AIRSPACE: CLASS D.



CONTINUED ON NEXT PAGE

CONTINUED FROM PRECEDING PAGE

RADIO AIDS TO NAVIGATION: NOTAM FILE CXO.

TRINITY (VL) (DL) VORW/DME 114.75 MHF Chan 94(Y) N29°32.78' W94°44.85' 273° 21.8 NM to fld. 38/7E.

VOR unusable:

060°-079° byd 40 NM
 080°-090° byd 40 NM blo 6,000'
 080°-090° byd 50 NM blo 8,000'
 091°-109° byd 40 NM
 110°-190° blo 2,000'

(L) TACAN Chan 31 EFD (109.4) N29°36.36' W95°09.58' at fld. 29/5E. NOTAM FILE EFD.

DME unusable:

065°-090° byd 30 NM

TACAN AZIMUTH unusable:

065°-090° byd 30 NM

ILS 110.3 I-LPV Rwy 17R. Class IE.

ILS 110.1 I-FNF Rwy 22. Class IE.

ILS 111.1 I-EFD Rwy 35L. Class IT.

GEORGE BUSH INTCNL/HOUSTON (IAH)(KIAH) 15 N UTC-6(-5DT) N29°59.07' **HOUSTON
COPTER**
 W95°20.49'

96 B LRA Class I, ARFF Index E NOTAM FILE IAH

H-7C, L-19E, 21A, GOMW

RWY 15L-33R: H12001X150 (CONC-GRVD) S-100, D-200, 2S-175, 2D-400, 2D/2D2-800

IAP, AD

PCN 72 R/A/W/T HIRL CL

RWY 15L: PAPI(P4R)—GA 3.0° TCH 58'. RVR-TMR

RWY 33R: MALSR. RVR-TMR

RWY 09-27: H10000X150 (CONC-GRVD) D-210, 2S-175, 2D-560 PCN 67 R/A/W/T HIRL CL

RWY 09: MALSR. PAPI(P4R)—GA 3.0° TCH 71'. RVR-TMR

RWY 27: ALSF2. TDZL. PAPI(P4L)—GA 3.0° TCH 70'. RVR-TMR

RWY 15R-33L: H10000X150 (CONC-GRVD) S-75, D-200, 2S-175, 2D-400, 2D/2D2-873 PCN 94 R/B/W/T HIRL CL

RWY 15R: MALSR. TDZL. PAPI(P4L)—GA 3.0° TCH 71'. RVR-TMR

RWY 33L: TDZL. PAPI(P4R)—GA 3.0° TCH 59'. RVR-TMR

RWY 08R-26L: H9402X150 (CONC-GRVD) S-75, D-210, 2S-175, 2D-498, 2D/2D2-873 PCN 72 R/A/W/T HIRL CL

RWY 08R: MALSR. TDZL. PAPI(P4L)—GA 3.0° TCH 72'. RVR-TMR

RWY 26L: ALSF2. TDZL. PAPI(P4R)—GA 3.0° TCH 71'. RVR-TMR

RWY 08L-26R: H9000X150 (CONC-GRVD) S-75, D-210, 2S-175, 2D-409, 2D/2D2-873 PCN 72 R/A/W/T HIRL CL

RWY 08L: ALSF2. TDZL. RVR-TMR

RWY 26R: ALSF2. TDZL. RVR-TMR

LAND AND HOLD-SHORT OPERATIONS

LDG RWY	HOLD-SHORT POINT	AVBL LDG DIST
RWY 08R	TWY NP	9019
RWY 26L	TWY NE	9010

RUNWAY DECLARED DISTANCE INFORMATION

RWY 08L:TORA-9000 TODA-9000 ASDA-9000 LDA-9000

RWY 08R:TORA-9402 TODA-9402 ASDA-9402 LDA-9402

RWY 09: TORA-10000 TODA-10000 ASDA-10000 LDA-10000

RWY 15L:TORA-12001 TODA-12001 ASDA-12001 LDA-12001

RWY 15R:TORA-10000 TODA-10000 ASDA-10000 LDA-10000

RWY 26L:TORA-9402 TODA-9402 ASDA-9402 LDA-9402

RWY 26R:TORA-9000 TODA-9000 ASDA-9000 LDA-9000

RWY 27: TORA-10000 TODA-10000 ASDA-10000 LDA-10000

RWY 33L:TORA-10000 TODA-10000 ASDA-10000 LDA-10000

RWY 33R:TORA-12001 TODA-12001 ASDA-12001 LDA-12001

SERVICE: S4 FUEL 100LL, JET A OX2

NOISE: Noise sensitive area north, east and west of arpt.

CONTINUED ON NEXT PAGE