

PARIS (SUBIACO)

PARIS MUNI (7M6) 2 E UTC-6(-5DT) N35°17.95' W93°40.90' MEMPHIS

430 B NOTAM FILE JBR

RWY 03-21: H2710X60 (ASPH) S-10 MIRL 0.7% up SW

RWY 03: Road.

RWY 21: PAPI(P2L)—GA 3.0° TCH 43'. Tree.

SERVICE: LGT Actvt MIRL Rwy 03-21—CTAF.

AIRPORT REMARKS: Unattended. Agriculture ops Feb-Oct blo 500' AGL.

AIRPORT MANAGER: 479-963-2450

COMMUNICATIONS: CTAF 122.9

CLEARANCE DELIVERY PHONE: For CD ctc Memphis ARTCC at 901-368-8453/8449.

PETIT JEAN PARK (See MORRILTON on page 68)

PIGOTT MUNI (7M7) 2 E UTC-6(-5DT) N36°22.69' W90°09.97' ST LOUIS

275 B NOTAM FILE JBR

RWY 18-36: H2550X50 (ASPH) S-10 MIRL

RWY 18: Thld dspcd 550'.

RWY 36: Thld dspcd 230'. Trees.

SERVICE: LGT ACTVT MIRL Rwy 18-36—CTAF.

AIRPORT REMARKS: Unattended. South end of Rwy 18-36 flooded after heavy rain.

AIRPORT MANAGER: 870-324-2358

COMMUNICATIONS: CTAF 122.9

CLEARANCE DELIVERY PHONE: For CD ctc Memphis ARTCC at 901-368-8453/8449.

PINE BLUFF

PINEBLUFF RGNL/GRIDER FLD (PBF)(KPBF) P (NG) 4 SE UTC-6(-5DT) N34°10.47' W91°56.14' MEMPHIS

206 B TPA—1200(994) NOTAM FILE PBF H-6J, L-18F

RWY 18-36: H5998X150 (ASPH) S-40, D-56, 2D-90 MIRL IAP

RWY 18: MALSR. VASI(V4L)—GA 3.0° TCH 52'.

RWY 36: VASI(V4L)—GA 3.0° TCH 52'.

SERVICE: S4 FUEL 100LL, JET A LGT ACTIVATE MIRL Rwy 18-36 and MALSR Rwy 18—CTAF.

MILITARY— FUEL (NC-100LL, A – Self svc avbl H24 with credit card)

AIRPORT REMARKS: Attended 1400-0000Z. For arpt attendant after hours call 870-540-9439. Self svc fuel avbl 24 hrs with credit card (100LL and JET A). Arpt CLOSED to acft with 30 or more passengers. Migratory birds invof arpt. Numerous AG ops on and invof arpt year round.

AIRPORT MANAGER: 870-534-4131

WEATHER DATA SOURCES: ASOS 120.775 (870) 536-0228.

COMMUNICATIONS: CTAF/UNICOM 123.0

PINE BLUFF RCO 122.6 (JONESBORO RADIO)

Ⓡ **LITTLE ROCK APP/DEP CON** 119.85

CLNC DEL 119.85 (501) 379-2908

CLEARANCE DELIVERY PHONE: For CD ctc Memphis ARTCC at 901-368-8453/8449.

AIRSPACE: CLASS E.

RADIO AIDS TO NAVIGATION: NOTAM FILE PBF.

PINE BLUFF (VL) (L) VOR/DME 116.0 PBF Chan 107 N34°14.81' W91°55.57' 182° 4.4 NM to fld. 212/4E.

VOR unusable:

020°-021° byd 40 NM

067°-069° byd 40 NM

108°-110° byd 40 NM

140°-145° byd 35 NM blo 4,900'

170°-172° byd 40 NM

176°-178° byd 40 NM

239°-249° byd 40 NM blo 6,000'

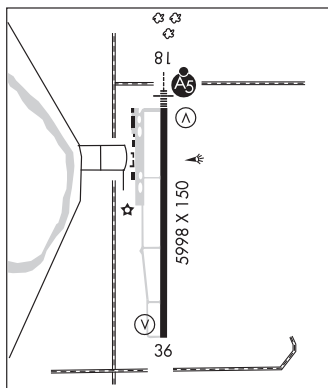
239°-249° byd 59 NM

260°-275° byd 25 NM

292°-294° byd 40 NM

322°-328° byd 40 NM

ILS 111.7 I-PBF Rwy 18. Class IT. Unmonitored indef. Autopilot cpd apch NA blw 900 MSL.

**PINEBLUFF RGNL/GRIDER FLD** (See PINE BLUFF on page 74)