

FOLKSTON

**DAVIS FLD** (3J6) 3 SW UTC-5(-4DT) N30°47.78' W82°01.69'  
 68 B NOTAM FILE MCN  
**RWY 01-19:** H2500X50 (ASPH) S-12.5 MIRL  
**RWY 01:** Trees. Rgt tfc.  
**RWY 19:** Trees.  
**SERVICE:** LGT MIRL Rwy 01-19 preset low intst dusk-0130Z‡; aft 0130Z‡ ACTVT—CTAF.  
**AIRPORT REMARKS:** Unattended. Lgtd 272' AGL twr 1000' west.  
**AIRPORT MANAGER:** (912) 886-3260  
**COMMUNICATIONS:** CTAF 122.9  
**CLEARANCE DELIVERY PHONE:** For CD ctc Jacksonville Apch at 904-741-0284.

JACKSONVILLE

**FOOTHILLS** N34°41.75' W83°17.86' NOTAM FILE AND.  
**(H) (H) VOR/DME** 113.4 ODF Chan 81 179° 6.2 NM to Toccoa Rg Letourneau Fld. 1700/OE.  
 VOR unusable:  
 075°-085° byd 28 NM blo 5,300'  
 199°-213° byd 15 NM blo 7,800'  
 280°-295° byd 25 NM blo 11,000'  
 301°-311° byd 20 NM blo 11,000'  
 DME unusable:  
 324°-344° blo 9,000'

ATLANTA

H-9B, 12G, L-18B

**FORT MOORE** (See LAWSON AAF (FORT MOORE) on page 228)

**FORT STEWART)/MIDCOAST R** (See WRIGHT AAF (FORT STEWART)/MIDCOAST RGNL on page 259)

**FRANKLIN-HART** (See CANON on page 207)

**FULTON CO EXEC/CHARLIE BROWN FLD** (See ATLANTA on page 198)

GAINESVILLE

**LEE GILMER MEML** (GVL)(KGVL) 0 S UTC-5(-4DT) N34°16.36' W83°49.81'  
 1277 B NOTAM FILE GVL  
**RWY 05-23:** H5496X100 (ASPH-GRVD) S-45, D-100 HIRL  
 0.7% up SW  
**RWY 05:** MALSR. PAPI(P2R)—GA 3.0' TCH 30'. Trees.  
**RWY 23:** PAPI(P2L)—GA 3.0' TCH 38'. Thld dsplcd 396'. Trees.  
**RWY 11-29:** H4003X100 (ASPH) S-20, D-35 0.3% up NW  
**RWY 11:** Thld dsplcd 120'. Trees.  
**RWY 29:** Thld dsplcd 111'. Trees.  
**RUNWAY DECLARED DISTANCE INFORMATION**  
**RWY 05:** TORA-5496 TODA-5496 ASDA-5370 LDA-5370  
**RWY 11:** TORA-4001 TODA-4001 ASDA-3881 LDA-3770  
**RWY 23:** TORA-5496 TODA-5496 ASDA-5496 LDA-5100  
**RWY 29:** TORA-4001 TODA-4001 ASDA-3890 LDA-3770  
**SERVICE:** S3 FUEL 100LL, JET A+ 0X1 LGT Dusk-Dawn. Actvt  
 MALSR Rwy 05; HIRL Rwy 05-23—CTAF.  
**AIRPORT REMARKS:** Attended dalgt hrs. Deer on and invof all rwys. 24 hr self  
 svc fuel with credit card.  
**AIRPORT MANAGER:** 770-535-6882

ATLANTA

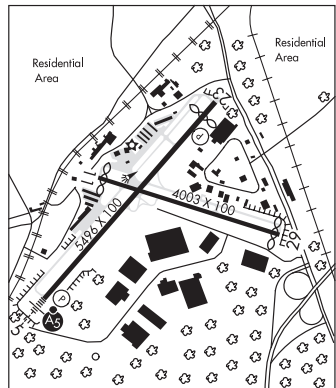
H-9B, 12G, L-18J

IAP

**WEATHER DATA SOURCES:** ASOS 126.475 (770) 532-4687.  
**COMMUNICATIONS:** CTAF/UNICOM 123.075  
**GAINESVILLE RCO** 122.5 (MACON RADIO)

- Ⓡ ATLANTA APP/DEP CON 132.475 (1115-0300Z‡)
- Ⓡ ATLANTA CENTER APP/DEP CON 127.5 (0300-1115Z‡)
- CLNC DEL 122.55 (GAINESVILLE RCO 1115-0300Z‡) 134.8 (ATLANTA CENTER (0300-1115Z‡)

**CLEARANCE DELIVERY PHONE:** For CD if una to ctc on FSS freq, ctc Atlanta Apch at 678-364-6131, when ATCT clsd ctc Atlanta ARTCC at 770-210-7692.



CONTINUED ON NEXT PAGE

CONTINUED FROM PRECEDING PAGE

RADIO AIDS TO NAVIGATION: NOTAM FILE AHN.

ATHENS (VH) (H) VOR/DME 116.95 AHN Chan 116(Y) N33°56.86' W83°19.49' 308° 31.8 NM to fld. 793/OE.

VOR unusable:

- 031°-047° byd 40 NM
- 053°-138° byd 40 NM
- 201°-203° byd 40 NM
- 237°-303° byd 40 NM
- 317°-331° byd 40 NM
- 346°-012° byd 40 NM

ILS/DME 110.55 I-GVL Chan 42(Y) Rwy 05. Class IT. Glideslope unusable byd 4° left and 7° right of course.

**GAINESVILLE** N34°16.76' W83°49.49'  
RCO 122.5 (MACON RADIO)

ATLANTA  
L-18J

**GILMER CO** (See ELLIJAY on page 219)

**GREENE CO RGNL** (See GREENSBORO on page 221)

**GREENSBORO**

**GREENE CO RGNL** (CPP)(KCPP) 3 NE UTC-5(-4DT) N33°35.88' W83°08.30'  
689 B NOTAM FILE MCN

ATLANTA  
H-9B, 12G, L-18J  
IAP

RWY 07-25: H5500X100 (ASPH) S-33, D-50, 2D-80 HIRL

RWY 07: PAPI(P2L)—GA 3.0° TCH 35'. Thld dsplcd 99'. Trees.

RWY 25: PAPI(P4L)—GA 3.0° TCH 30'. Trees.

**RUNWAY DECLARED DISTANCE INFORMATION**

RWY 07: TORA-5500 TODA-5500 ASDA-5500 LDA-5401

RWY 25: TORA-5500 TODA-5500 ASDA-5500 LDA-5500

**SERVICE:** FUEL 100LL, JET A+ LGT HIRL Rwy 07-25 preset med intst dusk-dawn. To incr intst or ACTVT PAPI Rwy 07 and Rwy 25, HIRL Rwy 07-25—CTAF.

**AIRPORT REMARKS:** Attended 1300-2200Z†. Deer on and invof arpt. 100LL self fuel with credit card avbl 1300-2200Z†, full svc avbl 1300-2200Z†, after hrs call 706-453-2715 or 706-817-8226.

**AIRPORT MANAGER:** (706) 453-2715

**WEATHER DATA SOURCES:** AWOS-3 124.525 (706) 453-0017. Wind unreliable.

**COMMUNICATIONS:** CTAF/UNICOM 122.8

Ⓡ ATLANTA APP/DEP CON 132.475 (1115-0300Z†)

Ⓡ ATLANTA CENTER APP/DEP CON 127.5 (0300-1115Z†)

GCO 121.725 (Atlanta APP or 678-364-6131 (preferred))

RADIO AIDS TO NAVIGATION: NOTAM FILE AHN.

ATHENS (VH) (H) VOR/DME 116.95 AHN Chan 116(Y) N33°56.86' W83°19.49' 156° 22.9 NM to fld. 793/OE.

VOR unusable:

- 031°-047° byd 40 NM
- 053°-138° byd 40 NM
- 201°-203° byd 40 NM
- 237°-303° byd 40 NM
- 317°-331° byd 40 NM
- 346°-012° byd 40 NM

JUNNE NDB (LOM) 353 VV N33°38.78' W83°01.31' 249° 6.5 NM to fld. LOC unusable wi 0.5 NM from thr.

LOC/DME 110.9 I-VVM Chan 46 Rwy 25. LOM JUNNE NDB. LOC unusable wi 0.5 NM from thr. LOC/DME unmonitored.

