

CONTINUED FROM PRECEDING PAGE

CLEARANCE DELIVERY PHONE: For CD etc Jacksonville Apch at 904-741-0284.

RADIO AIDS TO NAVIGATION: NOTAM FILE OCF.

OCALA (VL) (L) VORTAC 113.7 OCF Chan 84 N29°10.65' W82°13.58' 225° 26.0 NM to fld. 78/0E.

TACAN AZIMUTH unusable:

- 025°-078°
- 329°-350°
- 351°-024° byd 28NM

VOR unusable:

- 010°-024° byd 40 NM
- 030°-037° byd 40 NM
- 053°-060° byd 40 NM
- 065°-077° byd 40 NM
- 094°-108° byd 40 NM blo 3,000'
- 094°-108° byd 66 NM
- 127°-137° byd 40 NM
- 157°-171° byd 40 NM blo 13,000'
- 157°-171° byd 75 NM
- 177°-187° byd 40 NM blo 2,000'
- 177°-187° byd 54 NM
- 193°-210° byd 40 NM
- 219°-244° byd 40 NM
- 277°-298° byd 40 NM
- 325°-335° byd 40 NM blo 10,000'
- 325°-335° byd 76 NM
- 352°-005° byd 111 NM
- 352°-005° byd 40 NM blo 12,000'

CYPRESS N26°09.21' W81°46.69' NOTAM FILE APF.

MIAMI

(T) (T) VORV/DME 108.6 CY Y Chan 23 at Naples Muni. 9/3W.

H-8H, L-21D, 24G

DME unusable:

- 215°-315°

VOR unusable:

- 078°-139° blo 10,000'

DADE-COLLIER TRAINING AND TRANSITION (See MIAMI on page 136)

DAYTONA BEACH INTL (DAB)(KDAB) 3 SW UTC-5(-4DT) N29°10.79' W81°03.48'

JACKSONVILLE

34 B TPA—See Remarks Class I, ARFF Index C NOTAM FILE DAB

H-8H, L-21D, 24G

RWY 07L-25R: H10500X150 (ASPH-CONC-GRVD) S-120, D-224,

IAP, AD

2S-175, 2D-402, 2D/2D2-915 PCN 66 R/B/W/T HIRL CL

RWY 07L: MALSR. TDZL. RVR-T Thld dsplcd 690'. Road.

RWY 25R: MALSR. PAPI(P4L)—GA 3.0° TCH 72'. RVR-R Trees.

Rgt tfc.

RWY 16-34: H6001X150 (ASPH-GRVD) S-120, D-225, 2S-175,

2D-385, 2D/2D2-892 PCN 58 F/B/W/T MIRL

RWY 16: REIL. PAPI(P4L)—GA 3.0° TCH 50'. Trees.

RWY 34: REIL. PAPI(P4L)—GA 3.0° TCH 50'. Trees.

RWY 07R-25L: H3195X100 (ASPH) S-24, D-38.5 PCN 7 F/B/Y/T MIRL

RWY 07R: REIL. PAPI(P2L)—GA 3.0° TCH 48'. Trees. Rgt tfc.

RWY 25L: REIL. PAPI(P2L)—GA 3.0° TCH 44'. Trees.

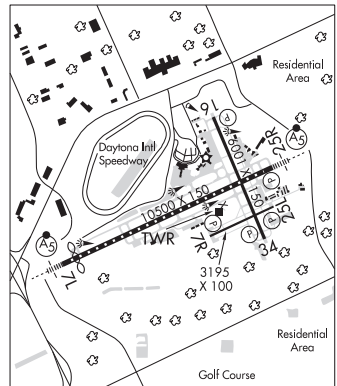
LAND AND HOLD—SHORT OPERATIONS

LDG RWY	HOLD—SHORT POINT	AVBL LDG DIST
RWY 07L	TWY W	7500
RWY 16	07L-25R	2900
RWY 34	07L-25R	2564

RUNWAY DECLARED DISTANCE INFORMATION

RWY 07L:TORA-10500	TODA-10500	ASDA-10500	LDA-9810
RWY 07R:TORA-3195	TODA-3195	ASDA-3195	LDA-3195
RWY 16: TORA-6001	TODA-6001	ASDA-5969	LDA-5969
RWY 25L:TORA-3195	TODA-3195	ASDA-3195	LDA-3195
RWY 25R:TORA-10500	TODA-10500	ASDA-10293	LDA-10293
RWY 34: TORA-6001	TODA-6001	ASDA-6001	LDA-6001

SERVICE: S4 FUEL 100LL, JET A OX1 LGT Rwy 25R PAPI unusbl byd 5 deg left and right of cntrln.



CONTINUED ON NEXT PAGE

CONTINUED FROM PRECEDING PAGE

NOISE: Use co fly quiet proc or rcmd noise abatement proc—Amgr.

AIRPORT REMARKS: Attended continuously. Hvy migratory bird act on and invof arpt. Hvy bird activity over landfill located 3.5NM SW of the airfield. Incrd drone act NE of arpt. Airfield sfc conds are not mntd btn the hrs of 0500–0900Z. All mil ops req 24 hr advnd cdn with arpt opns—PPR (386) 527–0657. All helo ops expc Twy W btn Twy A and Rwy 16 apch end clsd to rotary wing acft with rotor span more than 50' exc 1 hr. PPR—(386) 527–0657. PPR for Daytona Beach Speedway low apch or fly-over. Ctc ATC for pmsn. DAB Twy C1 clsd to acft wingspan more than 119 ft; Twy W clsd to acft wingspan more than 119 ft; Twy W3 clsd to acft wingspan more than 79 ft. First 2300 ft Rwy 07L concrete on 50 ft wide keel section. Rwy 07R–25L outer edges of pavement uneven. Rwy 07R–25L sked acr ops more than 9 pax seats or unsked acr at least 31 pax seats na. TPA—TPA for lgt acft 965 ft AGL; TPA for hi per acft 1365 ft AGL. Twy 'N' N of Rwy 07L–25R can be mistaken for rwy and apch environment. E end of Twy S end is non-movement area. Twy E rstrd to 22,000 lbs max crtfyd gross tkof weight; Twy P rstrd to 190,500 lbs max crtfyd gross tkof weight. Twy W btn apch end Rwy 16 and Twy A clsd to mil hel ops and hover taxi ops. Twy W btn Twy A and apch end Rwy 16 clsd to rotary wing acft rotar span more than 50 ft exc 1 hr PPR 386–527–0657. Rotor wing hel must grnd taxi; if unabl use ctn durg hover taxi. Twy W btn Rwy 16 apch end and Twy A clsd to mil hel and hover taxi ops. Twy W btn Twy A and Rwy 16 apch end clsd to rotary wing with rotar span more than 50 ft exc 1 hr PPR—386–527–0657. US Custs ramp Rrstd Group II acft of wingspan 79 ft or less. Acft oprg Rwy 07L use ctn, Twy P3 and P4 have no signs, no mrkgs. Rwy 07L lead-off lines for Twy P3 and Twy P4 for Group 1 acft only with wingspan of less than 49'. SAID in use. Operate transponders with altitude reporting mode and ADS-B (if equipped) enabled on all airport surfaces.

AIRPORT MANAGER: 386-248-8030

WEATHER DATA SOURCES: ASOS (386) 257–6444 LLWAS.

COMMUNICATIONS: ATIS 132.875 UNICOM 122.95

® APP CON 118.85 (North 4000'–7500') 125.35 (South 3500' and blo) 127.075 (South 4000'–7500') (125.725 (8000'–11000') 125.8 (North 3500' and blo)

TOWER 120.7 **GND CON** 121.9 **CLNC DEL** 119.3

AIRSPACE: CLASS C svc ctc APP CON.

VOR TEST FACILITY (VOT) 111.0

RADIO AIDS TO NAVIGATION: NOTAM FILE OMN.

ORMOND BEACH (VH) (H) VORTAC 112.6 OMN Chan 73 N29°18.20' W81°06.76' 159° 7.9 NM to fld. 24/OE.

VOR unusable:

034°–036° byd 40 NM
 070°–100° byd 35 NM blo 1,500'
 099°–112° byd 40 NM
 122°–141° byd 40 NM
 159°–161° byd 40 NM
 170°–181° byd 40 NM blo 3,000'
 170°–181° byd 46'
 207°–209° byd 40 NM
 236°–239° byd 40 NM
 240°–244° blo 6,000'
 240°–250° byd 53 NM
 251°–286° byd 40 NM
 290°–298° byd 40
 290°–300° byd 20 NM blo 2,500'
 318°–321° byd 40 NM
 326°–328° byd 40 NM

ILS 109.7 I–DAB Rwy 07L. Class IA. Auto cpd apch NA blw 535' MSL due to glideslope reversal

ILS/DME 109.7 I–DBF Chan 34 Rwy 25R. Class IE.