

**WINDOW ROCK** (RQE)(KRQE) 1 S UTC-7 N35°39.12' W109°04.04'

6742 B NOTAM FILE RQE

**RWY 03-21:** H7000X75 (ASPH) S-30, D-45, 2D-75 MIRL

**RWY 03:** REIL. PAPI(P2L)—GA 3.0° TCH 42'. Fence.

**RWY 21:** REIL. Rgt tfc.

**SERVICE:** LGT ACTVT REIL Rwy 03 and 21; MIRL Rwy 03-21—CTAF.

**AIRPORT REMARKS:** Attended Mon-Fri 1500-0000Z. Gate access code 2476. Twy turn-a-round at Rwy 03 thr unusable due to large cracks, ruts, holes and loose aggregate. Hills and cliffs all quadrants. Turbulence may be experienced in/ovt arpt.

**AIRPORT MANAGER:** 928-871-6466

**WEATHER DATA SOURCES:** ASOS 118.325 (928) 810-7235.

**COMMUNICATIONS:** CTAF/UNICOM 122.8

Ⓡ **ALBUQUERQUE CENTER APP/DEP CON** 124.325

**CLEARANCE DELIVERY PHONE:** For CD etc Albuquerque ARTCC at 505-856-4861.

**RADIO AIDS TO NAVIGATION:** NOTAM FILE GUP.

**GALLUP (VH) (H) VORTAC** 115.1 GUP Chan 98 N35°28.56' W108°52.36' 304° 14.2 NM to fld. 7051/14E.

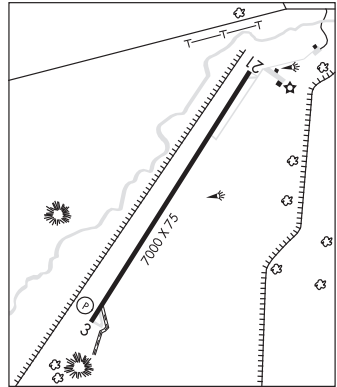
VOR unusable:

298°-306° byd 40 NM

**DENVER**

H-4K, L-8H

IAP



**WINSLOW-LINDBERGH RGNL** (INW)(KINW) 1 W UTC-7 N35°01.31' W110°43.35'

4941 B NOTAM FILE INW MON Airport

**RWY 04-22:** H7499X150 (ASPH) S-50, D-80, 2S-102, 2D-125

MIRL 0.8% up SW

**RWY 22:** REIL. VASI(V4L)—GA 3.0° TCH 40'. Thld dspcd 1262'. Tree.

**RWY 11-29:** H7100X150 (ASPH) S-60, D-70, 2S-89, 2D-110 MIRL

0.4% up NW

**RWY 11:** REIL. VASI(V4L)—GA 3.0° TCH 36'. Rgt tfc.

**RWY 29:** VASI(V4L)—GA 3.0° TCH 28'. Thld dspcd 344'. Fence.

**RUNWAY DECLARED DISTANCE INFORMATION**

**RWY 04:** LDA-7499

**RWY 11:** LDA-7100

**RWY 22:** LDA-6236

**RWY 29:** LDA-6756

**SERVICE:** FUEL 100LL, JET A LGT ACTIVATE REIL Rwy 11 and Rwy 22; MIRL Rwy 04-22 and Rwy 11-29—CTAF. VASI Rwy 11 and Rwy 29 opr consly.

**AIRPORT REMARKS:** Attended Mon-Fri 1400-0100Z, Sat-Sun 1500-0000Z. After hr svc - 928-587-2630. Rwy 11-29 edges both sides rough with cracks & vegetation; center ptn has lrg cracks & 4 in holes. Rwy 11 markings faded. Rwy 29 markings faded. SW corner of Forest Svc ramp clsd. Landing fee for commercial aircraft. Overnight tiedown fee.

**AIRPORT MANAGER:** 928-289-2422

**WEATHER DATA SOURCES:** ASOS 118.875 (928) 289-0134.

**COMMUNICATIONS:** CTAF/UNICOM 122.8

RCO 122.6 (PRESCOTT RADIO)

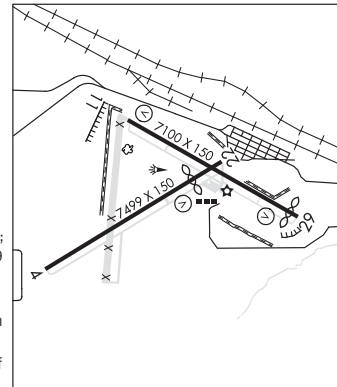
Ⓡ **ALBUQUERQUE CENTER APP/DEP CON** 127.675

**CLEARANCE DELIVERY PHONE:** For CD if una to ctc on FSS freq, etc Albuquerque ARTCC at 505-856-4561.

**PHOENIX**

H-4K, L-8G

IAP



CONTINUED ON NEXT PAGE

## CONTINUED FROM PRECEDING PAGE

AIRSPACE: CLASS E svc 1100-0600Z; other times CLASS G.

RADIO AIDS TO NAVIGATION: NOTAM FILE INW.

(VH) (H) VORTACW 112.6 INW Chan 73 N35°03.70' W110°47.70' 110° 4.3 NM to fld. 4913/14E.

VOR unusable:

015°-021° byd 40 NM  
 022°-032° byd 40 NM blo 31,000'  
 033°-043° byd 40 NM blo 13,000'  
 033°-043° byd 96 NM  
 044°-050° byd 40 NM  
 073°-077° byd 40 NM  
 120°-160° byd 40 NM  
 161°-171° byd 40 NM blo 16,000'  
 161°-171° byd 48 NM  
 172°-185° byd 40 NM blo 12,000'  
 172°-185° byd 63 NM  
 186°-191° byd 40 NM  
 192°-202° byd 40 NM blo 10,000'  
 192°-202° byd 62 NM  
 203°-215° byd 40 NM blo 14,000'  
 203°-215° byd 77 NM  
 216°-281° byd 40 NM  
 282°-292° byd 40 NM blo 18,000'  
 302°-307° byd 40 NM

---