

LA VERNE

BRACKETT FLD (POC)(KPOC) 1 SW UTC-8(-7DT) N34°05.50' W117°46.91'

1014 B NOTAM FILE POC MON Airport

RWY 08R-26L: H4840X75 (ASPH) S-26 MIRL 0.9% up E**RWY 08R:** REIL. PAPI(P4L)—GA 3.76° TCH 34'. Hill. Rgt tfc.**RWY 26L:** REIL. PAPI(P4L)—GA 3.76° TCH 18'. Thld dsplcd 689'.

Road.

RWY 08L-26R: H3661X75 (ASPH) S-12.5 0.9% up E**RWY 08L:** Hill.**RWY 26R:** Road. Rgt tfc.**SERVICE:** S4 FUEL 100LL, JET A OX4 LGT When ATCT clsd, arpt lgts opr consly from 0500-1500Z. Rwy 08R VGSI unusbl byd 5 deg L of cntrln.**NOISE:** Noise abatement procedures in effect ctc arpt manager 909-593-1395.**AIRPORT REMARKS:** Attended continuously. Rwy 08L-26R unlgtd. Birds and wildlife invof arpt. Rapidly rising terrain 1 mile west-northwest of arpt.**AIRPORT MANAGER:** 909-593-1395**WEATHER DATA SOURCES:** AWOS-3PT 124.4 (909) 596-1523. LAWRS.**COMMUNICATIONS:** CTAF 118.2 ATIS 124.4 909-596-1523

UNICOM 122.95

Ⓡ **SOCAL APP/DEP CON** 125.5 (SW-North)**TOWER** 118.2 (Rwy 08R-26L) 133.3 (Rwy 08L-26R) (1500-0500Z)**GND CON** 125.0

CLNC DEL 121.875

CLEARANCE DELIVERY PHONE: For CD when ATCT clsd ctc SoCal Apch at 800-448-3724.**AIRSPACE:** CLASS D svc 1500-0500Z; other times CLASS G.**RADIO AIDS TO NAVIGATION:** NOTAM FILE RAL.**POMONA (L) VORTACW** 110.4 POM Chan 41 N34°04.70' W117°47.22' at fld. 1265/15E.

DME unusable:

300°-045° byd 20 NM

VOR unusable:

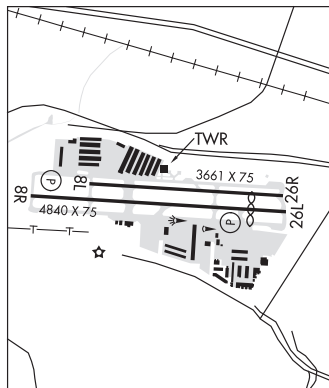
280°-300° byd 20 NM blo 13,000'

300°-045° byd 20 NM

TACAN AZIMUTH unusable:

280°-300° byd 20 NM blo 14,000'

300°-045° byd 20 NM

ILS 110.5 I-POC Rwy 26L. Class IA. LOC unusable byd 25° right of course.LOS ANGELES
COPTER
L-3E, 4H, 7C
IAP, AD**LAKE HUGHES** N34°40.98' W118°34.62' NOTAM FILE HHR.(H) (H) **VORTACW** 114.35 LHS Chan 90(Y) 359° 27.9 NM to Tehachapi Muni. 5790/15E.LOS ANGELES
L-3E, 4G, 7B

VOR portion unusable:

335°-350° blo 10,000'

RCO 122.3 (HAWTHORNE RADIO)**LAKE OROVILLE LANDING AREA SPB** (See OROVILLE on page 223)**LAKE TAHOE** (See SOUTH LAKE TAHOE on page 282)

LAKEPORT

LAMPSON FLD (102) 3 S UTC-8(-7DT) N38°59.44' W122°54.04'

1380 B TPA-2180(800) NOTAM FILE OAK

RWY 10-28: H3600X60 (ASPH) S-30 MIRL 0.3% up NW**RWY 10:** Trees.**RWY 28:** PAPI(P2L)—GA 4.0° TCH 40'. Thld dsplcd 85'. Road. Rgt tfc.**SERVICE:** S4 FUEL 100LL LGT ACTIVATE MIRL Rwy 10-28—CTAF.**AIRPORT REMARKS:** Unattended.**AIRPORT MANAGER:** 707-263-2341**WEATHER DATA SOURCES:** AWOS-3 118.35 (707) 262-0380.**COMMUNICATIONS:** CTAF/UNICOM 122.8Ⓡ **OAKLAND CENTER APP/DEP CON** 127.8**CLEARANCE DELIVERY PHONE:** For CD ctc Oakland ARTCC at 510-745-3380.**RADIO AIDS TO NAVIGATION:** NOTAM FILE UKI.**MENDOCINO (VH) (H) VORTACW** 112.3 ENI Chan 70 N39°03.19' W123°16.46' 086° 17.9 NM to fld. 2985/16E.SAN FRANCISCO
L-2G
IAP**LAMPSON FLD** (See LAKEPORT on page 182)