

**SALINAS MUNI** (SNS)(KSNS) 3 SE UTC-8(-7DT) N36°39.74' W121°36.43'

**SAN FRANCISCO**

84 B TPA—884(800) NOTAM FILE SNS

H-3B, L-3B

**RWY 08-26:** H6004X150 (ASPH) S-80, D-136, 2D-244 MIRL

**RWY 08:** VASI(V2L)—GA 3.0° TCH 53'. Thld dsplcd 396'. Rgt tfc.

**RWY 26:** REIL. VASI(V2L)—GA 3.0° TCH 43'.

**RWY 13-31:** H4825X150 (ASPH) S-120, D-235, 2S-127, 2D-401, 2D/2D2-935 HIRL

**RWY 13:** REIL. VASI(V4L)—GA 3.0° TCH 50'. RVR-R Trees.

**RWY 31:** MALSR. PAPI(P2L)—GA 3.0° TCH 59'. RVR-T Rgt tfc.

**SERVICE:** S4 **FUEL** 100LL, **JET A** **OX3** **LGT** When ATCT clsd ACTVT  
MALSR Rwy 31; REIL Rwy 13 and Rwy 26; PAPI Rwy 31; HIRL Rwy 13-31; MIRL Rwy 08-26, H1—CTAF. VASI Rwy 08, Rwy 13 and Rwy 26 opr consly.

**AIRPORT REMARKS:** Attended continuously. Portions of Twy B between D and N limited twr svc provided. 6' tall security fence 400' prior to Rwy 13 thld on centerline and steeply descending terrain 350' prior to Rwy 31 thld on centerline both in Rwy 13-31 safety area. NOTE: See Special Notices—California Condors.

**AIRPORT MANAGER:** 831-758-7214

**WEATHER DATA SOURCES:** ASOS (831) 422-2830 LAWRS.

**COMMUNICATIONS:** CTAF 119.525 **UNICOM** 123.00 **ATIS** 124.85

**RCO** 122.6 (OAKLAND RADIO)

® **NORCAL APP/DEP CON** 133.0 (001°-135° MRY)

**TOWER** 119.525 (1400-0300Z‡ Oct-Mar; 1300-0300Z‡ Apr-Sep) **GND CON** 121.7

**CLEARANCE DELIVERY PHONE:** For CD when ATCT is clsd ctc NorCal Apch at 916-361-3748.

**AIRSPACE:** CLASS D svc 1400-0300Z‡ Oct-Mar, 1300-0300Z‡ Apr-Sep; other times CLASS G.

**RADIO AIDS TO NAVIGATION:** NOTAM FILE SNS.

**(VH) (H) VORTACW** 117.3 SNS Chan 120 N36°39.83' W121°36.19' at fld. 81/17E.

VOR unusable:

- 010°-016° byd 22 NM blo 7,000'
- 010°-016° byd 26 NM blo 8,000'
- 016°-080° byd 22 NM blo 8,000'
- 109°-119° byd 40 NM blo 6,000'
- 109°-119° byd 58 NM
- 135°-250° byd 40 NM
- 150°-170° byd 8 NM blo 10,000'
- 295°-302° byd 40 NM
- 303°-313° byd 40 NM blo 18,000'
- 314°-338° byd 40 NM
- 339°-349° byd 40 NM blo 18,000'
- 350°-108° byd 40 NM

TACAN AZIMUTH unusable:

- 010°-080° byd 22 NM blo 8,000'
- 150°-200° blo 11,000'
- 245°-255° byd 20 NM

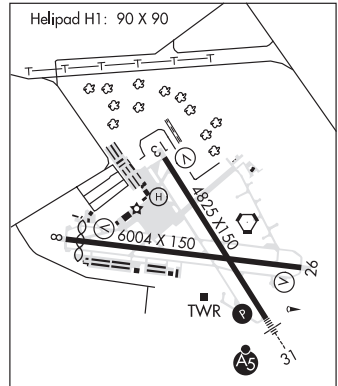
DME unusable:

- 010°-080° byd 22 NM blo 8,000'
- 150°-200° blo 11,000'

ILS 108.5 I-SNS Rwy 31. Class IB. Unmonitored when ATCT clsd.



**HELIPAD H1:** H90X90 (ASPH-CONC-AFSC)



**SALTON CITY**

**SALTON SEA** (SAS)(KSAS) 1 SW UTC-8(-7DT) N33°14.47' W115°57.16'

**LOS ANGELES**

-84 TPA—716(800) NOTAM FILE SAN

**RWY 07-25:** 5000X75 (GRVL) S-28

**RWY 07:** Rgt tfc.

**AIRPORT REMARKS:** Unattended. Loose gravel in vicinity of parking area. Occasional ultralight activity on weekends.

**AIRPORT MANAGER:** (909) 429-4200

**COMMUNICATIONS:** CTAF 122.9

® **YUMA APP/DEP CON** 128.55

**CLEARANCE DELIVERY PHONE:** For CD ctc Yuma CERAP at 928-269-9569.

**SALTON SEA** (See SALTON CITY on page 256)