

SANTA ANA

JOHN WAYNE/ORANGE CO (SNA)(KNSA) 4 S UTC-8(-7DT) N33°40.54' W117°52.09'

56 B TPA—See Remarks Class I, ARFF Index C NOTAM FILE SNA MON Airport

RWY 02L-20R: H5700X150 (ASPH-GRVD) S-70, D-200, 2S-121,
2D-300 PCN 120F/B/X/T HIRL 0.3% up S

RWY 02L: PAPI(P4L)—GA 3.0° TCH 75'. RVR-R

RWY 20R: MALS.R. PAPI(P4L)—GA 3.0° TCH 68'. RVR-T Rgt ttc.

RWY 02R-20L: H2886X75 (ASPH-GRVD) S-25, D-60

PCN 120F/B/X/T MIRL 0.4% up S

RWY 02R: Rgt ttc.

RWY 20L: REIL. PAPI(P4L)—GA 3.0° TCH 26'. Bldg.

RUNWAY DECLARED DISTANCE INFORMATION

RWY 02L:TORA-5700 TODA-5700 ASDA-5700 LDA-5700

RWY 20R:TORA-5700 TODA-5700 ASDA-5700 LDA-5700

SERVICE: S4 FUEL 100LL, JET A OX3, 4 LGT When twr clsd
ACTIVATE MALS.RwY 20R and PAPI Rwy 02L, and Rwy
20R—CTAF.

NOISE: Noise abatement procedures in effect contact arpt noise office
949-252-5185. Maintain at or above 300' AGL until established
final.

AIRPORT REMARKS: Attended continuously. Rwy 02R-20L CLSD when
ATCT clsd. Be alert to birds on and in/ov arpt. VFR Acft: To avoid
overflight of Rwy 20R, Rwy 20L arrs fly final at 15 deg angle to rwy;
Rwy 20L depts turn 15 deg left at dep end of rwy. To avoid overflight
of Rwy 02L, Rwy 02R depts turn 15 deg right at dep end of rwy. Acft ldg Rwy 20L, use ctn for jet blast from acft hldg btn
Rwy 20L and Rwy 20R at Twy L. ASDE-X in use. Operate transponders with altitude reporting mode and ADS-B (if
equipped) enabled on all airport surfaces. Rwy 02R-20L not avbl for sked acr opns with more than 9 psgr seats or unsked
acr opns with at least 31 psgr seats. Rwy 02L-20R TPA—1056 (1000) small acft; 1556 (1500) turbine acft over 12500
lbs.; Rwy 02R-20L TPA—856 (800) small sgl eng acft, 1056 (1000) twin eng acft. FBO general aviation aprons limited
to max gwt of 100,000 lbs (dual gear) and with wingspans less than 100'. General aviation acft prohibited from using
any portion of the air carrier commercial ramp. When twr clsd no local training or touch and go operations. Overnight
tiedown fee. User fee arpt.

AIRPORT MANAGER: 949-252-5171

WEATHER DATA SOURCES: ASOS (714) 424-0590 LAWRS (1400-0700Z‡).

COMMUNICATIONS: CTAF 126.8 D-ATIS 126.0 714-546-2279 UNICOM 122.95

SANTA ANA RCO 122.4 (RIVERSIDE RADIO)

Ⓜ SOCIAL APP CON 121.3

TOWER 119.9 (Rwy 02R-20L) 126.8 (Rwy 02L-20R) 128.35 (1415-0700Z‡)

GND CON 120.8 CLNC DEL 118.0 121.85

Ⓜ SOCIAL DEP CON 124.1 128.1 132.7

CPDLC (LOGON KUSA)

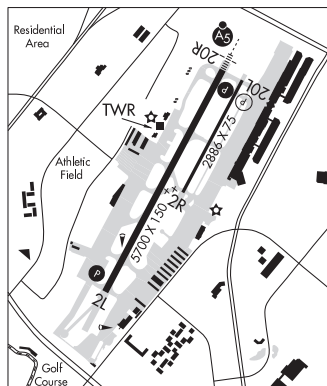
PDC

CLEARANCE DELIVERY PHONE: For CD when ATCT clsd ctc SoCal Apch at 800-448-3724.

AIRSPACE: CLASS C svc ctc APP CON svc 1415-0700Z‡ other times CLASS G.

VOR TEST FACILITY (VOT) 110.0

LOS ANGELES
COPTER
H-4I, L-3E, 4H, A
IAP, AD



CONTINUED ON NEXT PAGE

CONTINUED FROM PRECEDING PAGE

RADIO AIDS TO NAVIGATION: NOTAM FILE SLI.

SEAL BEACH (VL) (L) VORTACW 115.7 SLI Chan 104 N33°47.00' W118°03.29' 110° 11.3 NM to fld. 22/15E.

VOR unusable:

- 017°-027° byd 40 NM blo 18,000'
- 028°-038° byd 40 NM
- 075°-085° byd 40 NM blo 8,000'
- 075°-085° byd 48 NM blo 11,000'
- 075°-085° byd 65 NM
- 086°-123° byd 40 NM
- 124°-134° byd 40 NM blo 4,000'
- 124°-134° byd 48 NM
- 125°-180° byd 30 NM blo 4,000'
- 135°-145° byd 40 NM
- 183°-193° byd 40 NM
- 245°-256° byd 40 NM blo 5,500'
- 245°-256° byd 57 NM
- 278°-282° byd 40 NM
- 321°-016° byd 40 NM

TACAN AZIMUTH unusable:

- 125°-195° byd 20 NM blo 5,000'

DME unusable:

- 125°-195° byd 20 NM blo 5,000'

ILS/DME 111.75 I-SNA Chan 54(Y) Rwy 20R. Class IE. Unmonitored when ATCT closed. LOC back course unusable byd 30° left and 25° right of course. LOC unusable byd 30° left of course.

LDA/DME 108.3 I-OJW Chan 20 Rwy 20X. LDA unmonitored when ATCT clsd. Ry 20X created to support OJW LDA associated with SNA ILS Rwy 20R.

SANTA BARBARA HUG N34°22.60' W120°10.11'/152

LOS ANGELES

AWOS-3 119.625 (805) 961-4256 Private owner: offshore harmony platform

SANTA BARBARA MUNI (SBA)(KSBA) 7 W UTC-8(-7DT) N34°25.57' W119°50.49'

LOS ANGELES

14 B TPA—See Remarks ARFF Index—See Remarks NOTAM FILE SBA

H-4H, L-3D, 4F, 7A

IAP, AD

RWY 07-25: H6052X150 (ASPH-GRVD) S-110, D-160, 2S-175,

2D-245 PCN 66 F/A/X/U HIRL

RWY 07: MALSR. RVR-T Tree. Rgt tfc.

RWY 25: REIL. PAPI(P4L)—GA 3.0° TCH 50'. RVR-R Fence.

RWY 15R-33L: H4184X100 (ASPH) S-48, D-63, 2S-80, 2D-100

PCN 19 F/A/X/U MIRL

RWY 15R: REIL. Tree.

RWY 33L: Tree. Rgt tfc.

RWY 15L-33R: H4180X75 (ASPH) S-35, D-41, 2S-80, 2D-63

PCN 14 F/A/X/T

RWY 15L: Bldg.

RWY 33R: Rgt tfc.

RUNWAY DECLARED DISTANCE INFORMATION

RWY 07: TORA-6052 TODA-6052 ASDA-6052 LDA-6052

RWY 15L: TORA-4180 TODA-4180 ASDA-4180 LDA-3963

RWY 15R: TORA-4184 TODA-4184 ASDA-4184 LDA-4184

RWY 25: TORA-6052 TODA-6052 ASDA-6052 LDA-6052

RWY 33L: TORA-4184 TODA-4184 ASDA-4184 LDA-4184

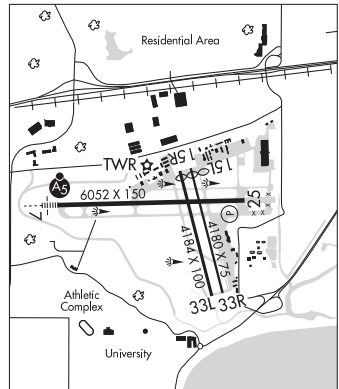
RWY 33R: TORA-4180 TODA-4180 ASDA-4180 LDA-4180

SERVICE: S4 FUEL 100LL, JET A OX 1, 2, 3, 4 LGT When ATCT clsd

ACTVT MALSR Rwy 07; REIL Rwy 15R; MIRL Rwy 15R-33L—CTAF. REIL Rwy 25; PAPI Rwy 25; HIRL Rwy 07-25 opr consly.

NOISE: Noise abatement procedures in effect ctc arpt ops 805-692-6011.

AIRPORT REMARKS: Attended 1400-0700Z†. 100LL fuel 24 hr credit card svc avbl. Fee for Jet A fuel after hrs call 805-454-0051 or 967-5608. Numerous flocks of birds on and invof arpt. Rwy 15L-33R dalgt hrs only. Class I, ARFF Index C. Rwys 15L-33R and 15R-33L not avbl for sked acr oprs with more than 9 psgr seats or unsked acr at least 31 psgr seats. All acr actf ctc atc on freq 121.7 prior to pushback from trml ramp and ron prkg 1400-0700Z†. Escorts rprd from ron prkg when atc is closed; ctc arpt ops 805-681-4803. Due to ltd ramp space at the airline terminal non-scheduled transport category acft with more than 30 passenger seats are required to ctc arpt ops 805-681-4803 24 hour PPR to arrival. Commercial airline ramp clsd to all General Aviation actf. No customs personnel or facilities are avbl and international acft will not be allowed to land unless an emerg exists. TPA-1004(990) small acft, 1504(1490) large acft. Pure jet touch/go or low approaches prohibited. Ldg fee for Part 135 oprs and trst acft with max GWT of 10,000 lbs or more. Fees will be billed/mailed. Ldg fee.



CONTINUED ON NEXT PAGE