

ST GEORGE RGNL (SGU)(KSGU) 5 SE UTC-7(-6DT) N37°02.18' W113°30.62'

2884 B Class I, ARFF Index B NOTAM FILE SGU

RWY 01-19: H9300X150 (ASPH-GRVD) S-75, D-150 HIRL

RWY 01: REIL. PAPI(P4L)—GA 3.0° TCH 50'

RWY 19: MALSR. PAPI(P4L)—GA 3.1° TCH 55'.

RUNWAY DECLARED DISTANCE INFORMATION

RWY 01: TORA-9300 TODA-9300 ASDA-9300 LDA-9300

RWY 19: TORA-9300 TODA-9300 ASDA-9300 LDA-9300

SERVICE: S4 FUEL 100LL, JET A OX2 LGT ACTVT MALSR Rwy 19;
REIL Rwy 01; HIRL Rwy 01-19—CTAF. PAPI Rwy 01 and 19 on consly.

AIRPORT REMARKS: Attended 1300-0700Z±. PPR ovr 150,000 lb—amgr.
Ldg fee acft +12,500 lb. Cold temp arpt. Alt cor rqrd at or below -6C.
Rwy 19 calm wind rwy.

AIRPORT MANAGER: 435-627-4085

WEATHER DATA SOURCES: AWOS-3PT 135.075 (435) 634-0940.

COMMUNICATIONS: CTAF/UNICOM 123.075

RCO 122.5 (CEDAR CITY RADIO)

Ⓡ **L.A. CENTER APP/DEP CON** 124.2

CLNC DEL 133.3 (Los Angeles Center)

AIRSPACE: CLASS E svc continuous.

RADIO AIDS TO NAVIGATION: NOTAM FILE CDC.

(T) (T) **VORW/DME** 108.6 UTI Chan 23 N37°01.06'

W113°31.07' 006° 1.2 NM to fld. 2848/12E.

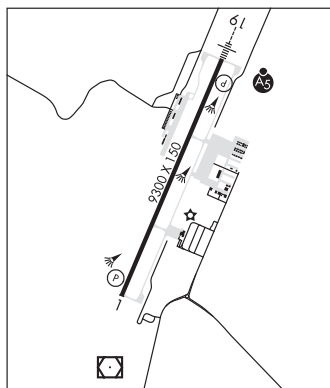
DME unusable:

125°-175° byd 15 NM blo 10,000'

VOR unusable:

140°-270°

LDA/DME 110.9 I-SGU Chan 46 Rwy 19. LOC unusable wi 0.7 NM fm thld. ILS monitored by ZLA SOC 24-hrs daily.



LAS VEGAS

H-4J, L-9C

IAF

SALINA-GUNNISON (44U) 5 NE UTC-7(-6DT) N39°01.75' W111°50.30'

5159 B NOTAM FILE CDC

RWY 02-20: H3855X60 (ASPH) S-6 MIRL 0.7% up N

SERVICE: LGT ACTIVATE MIRL Rwy 02-20—CTAF.

AIRPORT REMARKS: Unattended.

AIRPORT MANAGER: (435) 979-9234

COMMUNICATIONS: CTAF 122.9

CLEARANCE DELIVERY PHONE: For CD ctc Salt Lake ARTCC at 801-320-2568.

RADIO AIDS TO NAVIGATION: NOTAM FILE CDC.

DELTA (VH) (H) VORTACW 116.1 DTA Chan 108 N39°18.14'

W112°30.33' 102° 35.2 NM to fld. 4604/16E.

VOR unusable:

004°-022° byd 40 NM

028°-042° byd 40 NM

043°-065° byd 40 NM blo 18,000'

045°-090° byd 25 NM blo 10,700'

066°-148° byd 40 NM

207°-212° byd 40 NM

233°-251° byd 40 NM blo 16,000'

233°-251° byd 49 NM blo 16,000'

233°-251° byd 49 NM blo 18,000'

252°-255° byd 40 NM

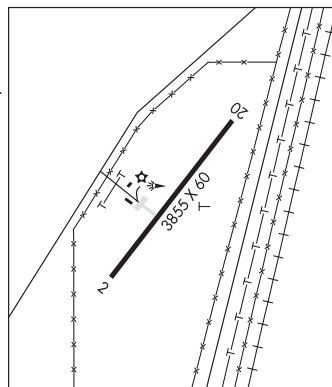
260°-265° byd 40 NM

330°-335° byd 40 NM

340°-003° byd 40 NM blo 11,000'

340°-003° byd 59 NM blo 12,000'

340°-003° byd 68 NM



LAS VEGAS

L-9C