

SOUTH VALLEY RGNL (See SALT LAKE CITY on page 492)

SPANISH FORK MUNI/WOODHOUSE FLD (SPK)(KSPK) 2 N UTC-7(-6DT) N40°08.70' W111°40.06'

SALT LAKE CITY
H-3D, L-9C, 11D
IAP

4530 B TPA—See Remarks NOTAM FILE CDC
RWY 12-30: H6500X100 (ASPH) S-24, D-36 PCN 17 F/D/X/T MIRL
RWY 12: REIL. PAPI(P4L)—GA 3.0° TCH 32'.
RWY 30: REIL. PAPI(P4L)—GA 3.0° TCH 35'. Road.
SERVICE: S4 FUEL 100LL, JET A LGT ACTVT REIL Rwy 12 and Rwy 30, PAPI Rwy 12 and Rwy 30, MIRL Rwy 12-30—CTAF.
NOISE: Noise abatement procedures in effect. Call arpt manager 801-798-9888.

AIRPORT REMARKS: Attended Mon-Sat 1600-0000Z±. For after hrs attendant 801-798-9888. Self svc 100LL avbl 24 hrs. For Jet A fuel call 801-798-9888. Deer and birds on and invof arpt. Dec-Feb expect up to 24 hrs after storm before rwy plowing. Residual snow and ice on rwy after plowing. For status call 801-798-9888/9. Hel arr Rwy 30 must ctc arpt prior to arr for tfc pat info. Rwy 12-30 rwy markings faded. Cold temperature airport. Altitude correction required at or below -21C. Rwy 12 apch, 60 ft mkd/lgt'd pline, 1475 ft dstc, 0 ft both, apch slope 21:1. TPA—5530(1000) for fixed wing acft, 5030(500) for rotary wing acft.

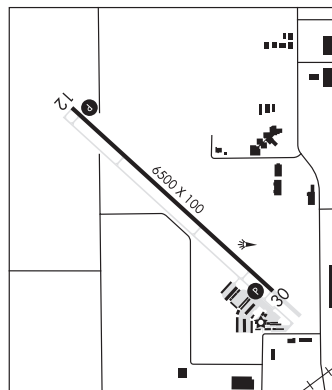
AIRPORT MANAGER: 801-804-4593
WEATHER DATA SOURCES: AWOS-3PT 119.275 (801) 804-5801.
COMMUNICATIONS: CTAF 122.9

Ⓡ SALT LAKE CITY APP/DEP CON 118.85

CLEARANCE DELIVERY PHONE: For CD ctc Salt Lake City Apch at 801-325-9670.

RADIO AIDS TO NAVIGATION: NOTAM FILE PVU.

PROVO (T) VORW/DME 108.4 PVU Chan 21 N40°12.90' W111°43.28' 135° 4.9 NM to fld. 4493/15E.
 VOR/DME unusable:
 350°-080° byd 10 NM



TOOELE

BOLINDER FLD/TOOELE VALLEY (TVY)(KTVY) 5 NW UTC-7(6DT) N40°36.75' W112°21.05' 4321 B NOTAM FILE CDC

SALT LAKE CITY
H-3D, L-9C, 11C
IAP

RWY 17-35: H6102X100 (ASPH) S-30, D-43 MIRL 0.8% up S
RWY 17: MALSR. PAPI(P4R)—GA 3.0° TCH 55'.
RWY 35: REIL. PAPI(P4L)—GA 3.0° TCH 45'. Thld dspcd 122'. Road.

RUNWAY DECLARED DISTANCE INFORMATION

RWY 17: TORA-6102 TODA-6102 ASDA-6102 LDA-6102
RWY 35: TORA-6102 TODA-6102 ASDA-6102 LDA-5980

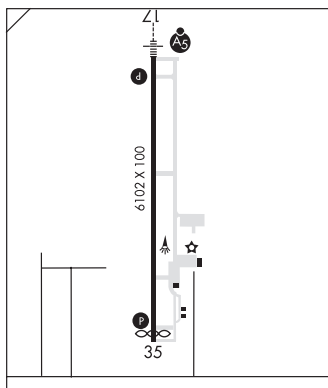
SERVICE: FUEL 100LL LGT ACTVT MALSR Rwy 17, REIL Rwy 35, PAPI Rwy 17 and Rwy 35—CTAF.

AIRPORT REMARKS: Unattended. Parachute Jumping. Extsv flt trng invof arpt. 100LL 24 hr self svc.

AIRPORT MANAGER: (801) 556-4082
WEATHER DATA SOURCES: AWOS-3 119.725 (435) 882-6648.
COMMUNICATIONS: CTAF/UNICOM 123.0

Ⓡ SALT LAKE CITY APP/DEP CON 126.25 135.5

CLNC DEL 120.9 124.4



CONTINUED ON NEXT PAGE

CONTINUED FROM PRECEDING PAGE

CLEARANCE DELIVERY PHONE: For CD ctc Salt Lake City Apch at 801-325-9670/9671/9672.

RADIO AIDS TO NAVIGATION: NOTAM FILE SLC.

WASATCH (VH) (H) VORTACW 116.8 TCH Chan 115 N40°51.02' W111°58.91' 214° 22.1 NM to fld. 4216/16E.

VOR unusable:

000°-015° byd 20 NM blo 17,000'
 015°-030° blo 26,000'
 030°-050° byd 20 NM
 050°-085° byd 20 NM blo 18,000'
 051°-072° byd 40 NM
 073°-092° byd 40 NM blo 15,000'
 073°-092° byd 47 NM blo 18,000'
 085°-125° byd 30 NM blo 15,000'
 093°-103° byd 40 NM
 104°-114° byd 40 NM blo 18,000'
 115°-143° byd 40 NM
 164°-173° byd 40 NM
 174°-184° byd 40 NM blo 16,000'
 185°-224° byd 40 NM
 225°-235° byd 40 NM blo 33,000'
 236°-243° byd 40 NM
 244°-254° byd 40 NM blo 8,000'
 244°-254° byd 46 NM blo 15,000'
 244°-254° byd 87 NM
 255°-290° byd 40 NM
 291°-301° byd 40 NM blo 11,500'
 291°-301° byd 62 NM blo 16,000'

DME unusable:

000°-030° byd 17 NM blo 16,000'
 000°-030° byd 30 NM
 030°-080° byd 17 NM blo 17,000'
 030°-080° byd 25 NM
 080°-140° byd 17 NM blo 15,000'
 080°-140° byd 25 NM
 185°-220° byd 25 NM blo 16,000'
 260°-290° byd 25 NM blo 11,000'
 350°-360° byd 30 NM blo 16,000'

TACAN AZIMUTH unusable:

000°-030° byd 17 NM blo 16,000'
 000°-030° byd 30 NM
 030°-140°
 185°-220° byd 25 NM blo 16,000'
 260°-290° byd 25 NM blo 11,000'
 350°-360° byd 30 NM blo 16,000'

VOR unusable:

291°-301° byd 96 NM
 302°-309° byd 40 NM
 310°-320° byd 40 NM blo 12,000'
 310°-320° byd 52 NM
 322°-326° byd 40 NM
 336°-346° byd 40 NM blo 18,000'
 347°-029° byd 40 NM

ILS/DME 111.15 I-TVY Chan 48(Y) Rwy 17. Class IT.