

POLACCA (P10) 3 SW UTC-7 N35°47.50' W110°25.40'
5573 TPA—6398(825) NOTAM FILE PRC
RWY 04-22: H4200X50 (ASPH) 0.3% up NE

DENVER
L-8G

RWY 04: Brush.
RWY 22: Brush.

AIRPORT REMARKS: Unattended. Rwy 04-22 has numerous large cracks, holes, rough surface, patches and loose rock, 8 in to 10 in high grass and weeds in cracks. Rocks piled, in circle, around wind indicator. Rwy 04-22, 1-5' brush 45' from centerline both sides full length of rwy. Rwy 04 cntrln markings only—extremely faded. Rwy 22 cntrln markings only—extremely faded. Road crossing rwy. Wash in safety zone. This aprt underlies a Military Operations Area (MOA). Pilots need to be aware of all restrictions and check for any NOTAMS in advance of flying through the MOA. Solar powered blue perimeter lgts at corners of parking ramp.

AIRPORT MANAGER: (928) 734-3243

COMMUNICATIONS: CTAF 122.9

CLEARANCE DELIVERY PHONE: For CD ctc Denver ARTCC at 303-651-4257.

RADIO AIDS TO NAVIGATION: NOTAM FILE PRC.

TUBA CITY (VH) (H) VORTAC 113.5 TBC Chan 82 N36°07.28' W111°16.18' 100° 45.7 NM to fld. 5045/15E.

VOR unusable:

- 089°-160° byd 40 NM
- 183°-202° byd 40 NM
- 207°-231° byd 40 NM
- 235°-245° byd 40 NM
- 275°-053° byd 40 NM

PRESCOTT RGNL/ERNEST A LOVE FLD (PRC)(KPRC) 7 N UTC-7 N34°39.29' W112°25.15'
5045 B TPA—See Remarks ARFF Index—See Remarks NOTAM FILE PRC MON Airport

PHOENIX
H-4J, L-8F
IAP, AD

RWY 03R-21L: H7619X150 (ASPH-PFC) S-63, D-80, 2S-101,

2D-100 PCN 8 F/D/Y/T MIRL 0.9% up SW

RWY 03R: REIL. PAPI(P4L)—GA 4.1° TCH 45'. Thld dsplcd 380'. Road.

RWY 21L: MALSR. PAPI(P4L)—GA 3.0° TCH 55'. Rgt ttc.

RWY 03L-21R: H4846X60 (ASPH) S-12.5 PCN 2 F/D/X/T MIRL 0.8% up SW

RWY 03L: PAPI(P2L)—GA 3.0° TCH 41'. Thld dsplcd 811'. Rgt ttc.

RWY 21R: PAPI(P2L)—GA 3.0° TCH 41'. Rgt ttc.

RWY 12-30: H4408X75 (ASPH) S-12.5 PCN 10 F/C/Y/T MIRL 0.6% up SE

RWY 12: REIL. PAPI(P2L)—GA 4.24° TCH 52'. Thld dsplcd 150'.

RWY 30: REIL. PAPI(P2L)—GA 3.6° TCH 44'.

LAND AND HOLD—SHORT OPERATIONS

LDG RWY	HOLD—SHORT POINT	AVBL LDG DIST
RWY 21L	12-30	5904

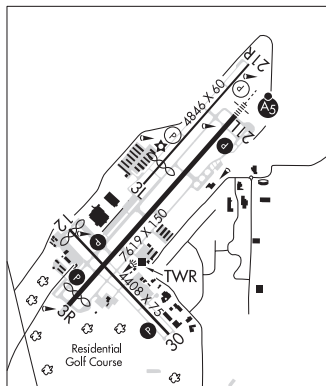
RUNWAY DECLARED DISTANCE INFORMATION

RWY 03L: TORA-4846	TODA-4846	ASDA-4846	LDA-4037
RWY 03R: TORA-7619	TODA-7619	ASDA-7619	LDA-7240
RWY 12: TORA-4408	TODA-4408	ASDA-4408	LDA-4258
RWY 21L: TORA-7619	TODA-7619	ASDA-7619	LDA-7619
RWY 21R: TORA-4846	TODA-4846	ASDA-4608	LDA-4608
RWY 30: TORA-4408	TODA-4408	ASDA-4258	LDA-4308

SERVICE: S4 FUEL 100LL, JET A LGT After 0500Z; ACTVT MALSR Rwy 21L; REIL Rwy 03R; PAPI Rwy 03R & Rwy 21L—CTAF. ACTVT REIL Rwy 12 & Rwy 30; PAPI Rwy 12-30; MIRL Rwy 12-30—128.75. Rwy 30 PAPI unusble byd 3 NM.

NOISE: Voluntary noise abatement proc in effect — aprt ops 928-777-1150.

AIRPORT REMARKS: Attended 1300-0500Z. Fuel avbl 1300-0400Z—928-443-9333; aft hr prior notice rqrd. Self service fuel rstrd to wingspan 50 ft or less. Rwy 03L-21R acr NA. CLOSED 0500-1300Z. Rwy 03R-21L - Rwy 21L calm wind rwy. Rwy 21L Dep rwy heading til acrs hwy & make imt l turn. Rwy 12-30 ACR NA. Ust ctn for chg in rwy gradient at Rwy 03R-21L int. Rwy 12 20 ft dropoff 300 ft fm apch end. Wildlife on & invof aprt. FICON not monitored 0500-1300Z. Class I, ARFF Index A. ARFF Index B avbl upon request. Winch tow up to 2500 ft 6 NM E at A C Goodwin Meml Fld. Ovnrg prkg fee. Lndg fee for tsnt coml acr 1200 lb or gtr based on max crtfdy lndg wt. ILS unmon when ATCT clsd. TPA for light acft all rwys 6045(1000). TPA for large acft, all turbo prop/jet and high perf acft all rwys 6545(1500). NOTE: See Special Notices—Extensive Flight Training in the vicinity of Ernest A. Love Field, Prescott, AZ.



CONTINUED ON NEXT PAGE

CONTINUED FROM PRECEDING PAGE

AIRPORT MANAGER: 928-777-1114

WEATHER DATA SOURCES: ASOS 127.2 (928) 541-3850.

COMMUNICATIONS: CTAF 125.3 ATIS 127.2 UNICOM 122.95

PRESCOTT RCO 122.2 (PRESCOTT RADIO)

® PHOENIX APP/DEP CON 133.575

PRESCOTT TOWER 125.3 (1300-0500Z) GND CON 121.7 PRESCOTT CLNC DEL 119.25

CLEARANCE DELIVERY PHONE: For CD when ATCT clsd, ctc Phoenix Apch at 602-306-2565.

AIRSPACE: CLASS D svc 1300-0500Z; other times CLASS E.

VOR TEST FACILITY (VOT) 110.0

RADIO AIDS TO NAVIGATION: NOTAM FILE PRC.

DRAKE (VH) (H) VORTACW 114.1 DRK Chan 88 N34°42.15' W112°28.82' 119° 4.2 NM to fld. 4966/14E.

VOR unusable:

055°-080° byd 29 NM blo 9,300'

065°-079° byd 40 NM blo 22,000'

125°-140° byd 35 NM blo 8,500'

128°-230° byd 40 NM

140°-160° byd 30 NM blo 9,500'

160°-175° byd 35 NM blo 9,500'

175°-185° byd 30 NM blo 9,500'

185°-195° byd 23 NM blo 9,100'

195°-220° byd 13 NM blo 9,100'

220°-235° byd 25 NM blo 9,100'

233°-243° byd 40 NM blo 18,000'

265°-275° byd 30 NM blo 8,800'

266°-274° byd 40 NM

TACAN AZIMUTH unusable:

055°-080° byd 29 NM blo 9,300'

125°-140° byd 35 NM blo 8,500'

140°-160° byd 30 NM blo 9,500'

160°-175° byd 35 NM blo 9,500'

175°-185° byd 30 NM blo 9,500'

185°-195° byd 23 NM blo 9,100'

195°-220° byd 13 NM blo 9,100'

220°-235° byd 25 NM blo 9,100'

265°-275° byd 30 NM blo 8,800'

DME unusable:

055°-080° byd 29 NM blo 9,300'

125°-140° byd 35 NM blo 8,500'

140°-160° byd 30 NM blo 9,500'

160°-175° byd 35 NM blo 9,500'

175°-185° byd 30 NM blo 9,500'

185°-195° byd 23 NM blo 9,100'

195°-220° byd 13 NM blo 9,100'

220°-235° byd 25 NM blo 9,100'

265°-275° byd 30 NM blo 8,800'

ILS/DME 108.5 I-PRC Chan 22 Rwy 21L. Class IA. ILS/DME unmonitored 0500-1300Z.

ROBLES N32°04.46' W111°21.61' NOTAM FILE PRC.

NDB (MHW) 220 RBJ 2611/12E. NDB unmonitored.

PHOENIX
L-5C**ROLLE AIRFIELD** (See SAN LUIS on page 81)**RYAN FLD** (See TUCSON on page 93)