

SPRINGERVILLE MUNI (JTC)(KJTC) 1 WSW UTC-7 N34°07.77' W109°18.65'

PHOENIX

7055 B NOTAM FILE PRC

H-4K, L-5D

RWY 03-21: H8422X75 (ASPH) S-30 MIRL

IAP

RWY 03: PAPI(P2L)—GA 4.0° TCH 46'. 0.4% down.

RWY 21: PAPI(P2L)—GA 3.0° TCH 35'. Rgt tfc. 0.6% up.

RWY 11-29: H4603X60 (ASPH) S-19 MIRL

RWY 11: PAPI(P2L)—GA 3.0° TCH 35'.

SERVICE: FUEL 100LL, JET A+ LGT Rwy 03 PAPI does not provide obstacle clearance 2 NM byd thld. ACTVT PAPI Rwy 03, Rwy 11 and Rwy 21; MIRL Rwy 03-21 and Rwy 11-29—CTAF: 5 clicks on; 7 clicks off.

AIRPORT REMARKS: Attended 1500-2300Z. Fuel: 100LL: Aft hr - 928-245-0151. Mil tfc invof arpt. Wildlife on and invof arpt. Density indcr at fuel pumps.

AIRPORT MANAGER: 928-333-5746**WEATHER DATA SOURCES:** AWOS-3PT 119.65 (928) 333-5716.**COMMUNICATIONS:** CTAF/UNICOM 122.8

Ⓡ ALBUQUERQUE CENTER APP/DEP CON 132.9

CLEARANCE DELIVERY PHONE: For CD ctc Albuquerque ARTCC at 505-856-4861.

RADIO AIDS TO NAVIGATION: NOTAM FILE SJN.**ST JOHNS (VH) (H) VORTAC** 112.3 SJN Chan 70 N34°25.44'

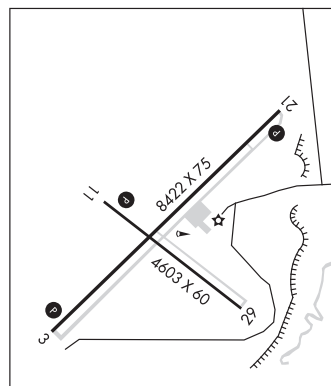
W109°08.61' 193° 19.5 NM to fld. 6840/12E.

VOR unusable:

097°-108° byd 40 NM

109°-119° byd 40 NM blo 18,000'

120°-222° byd 40 NM

**STANFIELD** N32°53.15' W111°54.52' NOTAM FILE PRC.

PHOENIX

(VH) (H) VORTAC 114.8 TFD Chan 95 048° 8.3 NM to Casa Grande Muni. 1316/12E.

H-4J, L-5B, A

VOR unusable:

034°-039° byd 40 NM

075°-088° byd 40 NM blo 9,000'

075°-088° byd 47 NM

110°-122° byd 40 NM

127°-134° byd 40 NM

160°-278° byd 40 NM

279°-289° byd 40 NM blo 18,000'

290°-315° byd 40 NM

RCO 122.1R 114.8T (PRESCOTT RADIO)**STELLAR AIRPARK** (See CHANDLER on page 40)**SUN VALLEY** (See BULLHEAD CITY on page 38)**SUPERIOR MUNI** (E81) 2 SW UTC-7 N33°16.67' W111°07.62'

PHOENIX

2646 NOTAM FILE PRC

RWY 04-22: 3250X75 (GRVL)

RWY 04: Tree.

AIRPORT REMARKS: Unattended. Emerg-520-689-5254 police. Gate code 2646. Lndg uphill to NE rcmd. Rwy 04-22 E 2000 ft excellent, W 1000 ft fair. Rwy 04-22 12 ft brush and trees 75 ft fm cntrln both sides; mainly 1000 ft W. Rwy 04 4375 ft MSL mountain located 9000 ft W. Livestock on arpt. Rwy 22 NSTD markings, painted rubber tires. Terrain NE; mts and hills SSW-SW.

AIRPORT MANAGER: 520-689-5752**COMMUNICATIONS:** CTAF/UNICOM 122.7**CLEARANCE DELIVERY PHONE:** For CD ctc Albuquerque ARTCC at 505-856-4861.