

**ENGSTROM FLD** (See BASIN CREEK on page 56)

**ERA CHULITNA RIVER HELIPORT** (See TRAPPER CREEK/TALKEETNA on page 248)

**EUREKA** AZK N61°56.22' W147°10.13'/3297  
AWOS-3P 134.95 (907) 822-3011

ANCHORAGE

**EUREKA CREEK** (222) 0 S UTC-9(-8DT) N65°10.55' W150°13.23'

FAIRBANKS

700 NOTAM FILE FAI

**RWY 16-34:** 1500X35 (DIRT)

**RWY 16:** Trees.

**RWY 34:** Trees.

**AIRPORT REMARKS:** Unattended. Rwy not monitored, recommend visual inspection prior to ldg. Rwy unsuitable for all acft. Rwy 16-34 not maintained, hazardous nor recommend for emerg use. Dur emerg ldgs use Elliott Highway or Manley Hot Springs arpt. Rwy 16-34 soft, wet, and rutted. 15' trees growing on rwy. Vehicle erosion has deteriorated entire sfc into deep rut. Sfc narrow uneven and rough. Rwy used as narrow road and campground by vehicles. 2' deep fire pit Rwy 34. 3' berm each side of rwy within 40' of cntrln. Trees and brush to 15' tall within 8' each side of rwy cntrln. Rwy slope 2% downhill South.

**COMMUNICATIONS:** CTAF 122.9

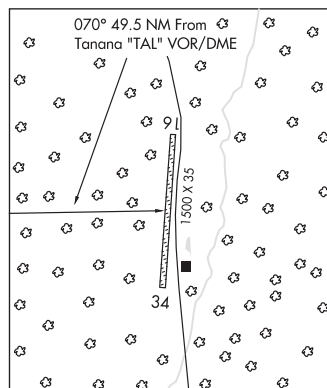
**RADIO AIDS TO NAVIGATION:** NOTAM FILE TAL.

**TANANA (H) (H) VOR/DME** 116.6 TAL Chan 113 N65°10.63'  
W152°10.65' 070° 49.5 NM to fld. 394/19E.

VOR AZIMUTH & DME portion unusable:

280°-050° byd 20 NM blo 9,000'

**COMM/NAV/WEATHER REMARKS:** For a toll free call to Fairbanks FSS dial 1-866-248-6516.



**EVA CREEK** (223) 7 E UTC-9(-8DT) N64°02.53' W148°51.79'

FAIRBANKS

2817 NOTAM FILE FAI

**RWY 08-26:** 950X40 (GRVL)

**RWY 08:** Brush.

**RWY 26:** Brush. Rgt tfc.

**AIRPORT REMARKS:** Unattended. Emerg fld for lgt planes only, knowledge of strip recommended prior to use, severe turbulence at all times. Rwy 08-26 loose rocks on rwy sfc. Up to 4 inch turf & brush growing on rwy sfc up to 30 inches tall. Brush and trees up to 20 ft tall growing on rwy sfc. 15 degree dogleg to the south on west end. Terrain drops off sharply on east side of rwy. Located 8 SM E of Ferry.

**COMMUNICATIONS:** CTAF 122.9

**RADIO AIDS TO NAVIGATION:** NOTAM FILE ENN.

**NENANA (H) (H) VORTACW** 115.8 ENN Chan 105 N64°35.40'  
W149°04.37' 149° 33.4 NM to fld. 1601/21E.

VOR unusable:

086°-096° byd 34 NM blo 5,000'

097°-105°

310°-335° byd 33 NM blo 5,000'

336°-360° byd 33 NM blo 4,000'

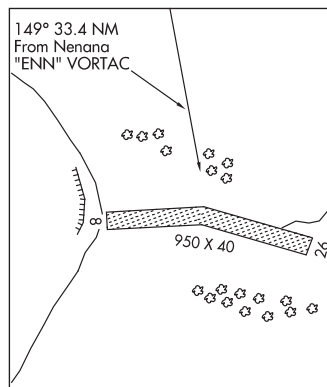
TAC AZM unusable:

097°-105°

DME unusable:

097°-105°

**COMM/NAV/WEATHER REMARKS:** For a toll free call to Fairbanks FSS dial 1-866-248-6516.



**EVANSVILLE** N66°53.59' W151°33.82' NOTAM FILE BTT.

**NDB (HW)** 391 EAV 013° 1.5 NM to Bettles. 20E.

FAIRBANKS

H-1A, L-4J