

PENINSULA POINT PULLOUT SPB (9C0) 4 NW UTC-9(-8DT) N55°23.08' W131°44.30'

KETCHIKAN

00 NOTAM FILE KTN

WATERWAY NE-SW: 9000X2000 (WATER)

SERVICE: S4 FUEL 100LL

SEAPLANE REMARKS: Unattended. Landing and tkof of wheeled airplanes prohibited. TEMSCO Helicopter landing pads adj to basin, helicopters in vicinity at low altitudes. For fuel, maint and parking ctc 907-225-0337.

AIRPORT MANAGER: 907-225-2513

COMMUNICATIONS: CTAF 123.6

RADIO AIDS TO NAVIGATION: NOTAM FILE ANN.

ANNETTE ISLAND (H) (H) VOR/DME 117.1 ANN Chan 118

N55°03.62' W131°34.70' 323° 20.3 NM to fld. 184/21E.

VOR unusable:

000°-100° byd 11 NM blo 12,000'

000°-100° byd 15 NM

000°-100° byd 9 NM blo 6,500'

120°-130° byd 37 NM blo 6,000'

290°-320° byd 32 NM blo 7,000'

290°-320° byd 37 NM blo 9,000'

345°-000° byd 20 NM

DME unusable:

000°-100° byd 11 NM blo 12,000'

000°-100° byd 15 NM

000°-100° byd 9 NM blo 6,500'

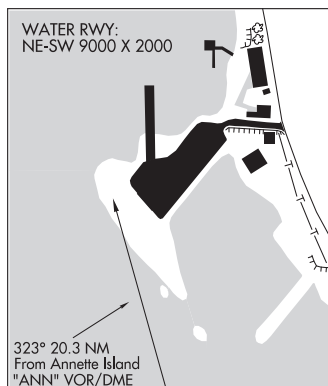
120°-130° byd 37 NM blo 6,000'

290°-320° byd 32 NM blo 7,000'

290°-320° byd 37 NM blo 9,000'

345°-000° byd 20 NM

COMM/NAV/WEATHER REMARKS: LC to Ketchikan FSS dial 225-9481. For a LC to Juneau FSS dial 789-7380.

**KIANA****BOB BAKER MEML** (IAN)(PAIK) 1 N UTC-9(-8DT) N66°58.57' W160°26.32'

179 B NOTAM FILE IAN

RWY 07-25: 4000X75 (GRVL) MIRL 0.8% up W

RWY 25: REIL. PAPI(P4R)—GA 3.0° TCH 29'. Brush.

SERVICE: LGT ACTVT REIL Rwy 25; PAPI Rwy 25; MIRL Rwy 07-25 and rot bcn—CTAF.

AIRPORT REMARKS: Unattended. Cold temperature airport. Altitude correction required at or below -28C. Rwy condition not monitored; recommend visual inspection prior to landing. Rwy 07-25 marked with lights and plastic markers. Rwy plowed in winter. Rwy slopes down from 07 to 25, grade 1%.

AIRPORT MANAGER: 907-442-3147

WEATHER DATA SOURCES: AWOS-3P 119.025 (907) 475-2004. (WX CAM)

COMMUNICATIONS: CTAF 122.7

Ⓡ ANCHORAGE CENTER APP/DEP CON 119.2

RADIO AIDS TO NAVIGATION: NOTAM FILE WLK.

SELAWIK (H) (H) VOR/DME 114.2 WLK Chan 89 N66°35.97'

W159°59.45' 319° 25.1 NM to fld. 11/16E.

COMM/NAV/WEATHER REMARKS: For LC to Kotzebue FSS dial 907-442-3310.

For a toll free call to Kotzebue FSS dial 1-800-478-7460. For a toll free call to Fairbanks FSS dial 1-866-248-6516.

NOME

H-1A, L-4I

IAP

