

**TAKOTNA** (TCT)(PPCT) 1 E UTC-9(-8DT) N62°59.58' W156°01.78'

MC GRATH

423 B NOTAM FILE ENA

L-3C

RWY 04-22: 3300X60 (GRVL) MIRL

SERVICE: LGT ACTIVATE MIRL Rwy 04-22 and rotating bcn—CTAF.

AIRPORT REMARKS: Unattended. Rwy condition not monitored, recommend visual inspection before using. Rwy 04-22 multiple lateral cracks full length and width of rwy. Uneven surface, dips, heaves and humps full length and width of rwy. Rwy 04-22 NSTD mkg: Rwy mkd with reflective cones and markers.

AIRPORT MANAGER: 907-524-3241

COMMUNICATIONS: CTAF 122.9

RADIO AIDS TO NAVIGATION: NOTAM FILE MCG.

MC GRATH (H) (H) VORTACW 115.5 MCG Chan 102 N62°57.06'  
W155°36.68' 264° 11.7 NM to fld. 344/19E.

TACAN AZIMUTH unusable:

014°-019° byd 19 NM blo 7,000'

040°-050° byd 21 NM blo 5,000'

144°-194° byd 6 NM blo 9,000'

195°-223° byd 28 NM blo 6,000'

224°-261° byd 12 NM blo 10,000'

262°-294° byd 25 NM blo 7,000'

295°-314° byd 21 NM blo 8,000'

DME unusable:

014°-019° byd 19 NM blo 7,000'

040°-050° byd 21 NM blo 5,000'

144°-194° byd 6 NM blo 9,000'

195°-223° byd 28 NM blo 6,000'

224°-261° byd 12 NM blo 10,000'

262°-294° byd 25 NM blo 7,000'

295°-314° byd 21 NM blo 8,000'

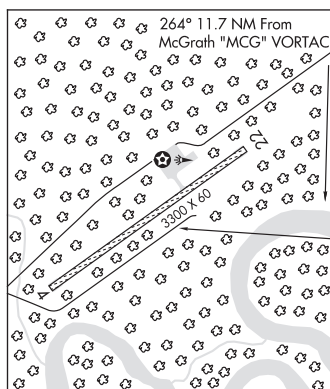
VOR unusable:

171°-260° byd 6 NM

171°-260° within 6 NM blo 4,000'

261°-170° byd 20 NM

COMM/NAV/WEATHER REMARKS: For a toll free call to Kenai FSS dial 1-866-864-1737.

**TAKU HARBOR SPB** (A43) 0 N UTC-9(-8DT) N58°04.15' W134°00.92'

JUNEAU

00 NOTAM FILE JNU

WATERWAY NE-SW: 3000X1000 (WATER)

SEAPLANE REMARKS: Unattended. Float space lmtd or NA due to boats. CAUTION: Wing and tail clnc to dock and pier.

AIRPORT MANAGER: (907)586-5255

COMMUNICATIONS: CTAF 122.9

COMM/NAV/WEATHER REMARKS: For a toll free call to Juneau FSS dial 1-866-297-2236.

**TAKU LODGE SPB** (TKL)(PFTK) 0 E UTC-9(-8DT) N58°29.38' W133°56.61'

JUNEAU

00 NOTAM FILE JNU

WATERWAY NE-SW: 5000X500 (WATER)

SEAPLANE REMARKS: Attended summer months dalgt hrs. Others occupy the lodges entire float, arriving and departing at 15 min intervals. Mountains northwest and southeast. Shallow at low tides land in river channel; summer ops only.

AIRPORT MANAGER: (907) 586-6275

COMMUNICATIONS: CTAF/UNICOM 123.05

COMM/NAV/WEATHER REMARKS: For a toll free call to Juneau FSS dial 1-866-297-2236.

**TALKEETNA****BIRCH CREEK LANDING** (51AK) PVT 6 SSE UTC-9(-8DT) N62°14.54' W150°03.95'

ANCHORAGE

400 NOTAM FILE Not insp.

RWY 16-34: 2500X75 (TURF)

AIRPORT REMARKS: Unattended. PPR before landing. All acft monitor and announce intentions on freq 123.6. Wind indicator SW of rwy. 200' cell 1/2 mile NW of rwy with white flashing lgts simultaneously. SPB ops on fish lake 1/2 mile N of rwy.

AIRPORT MANAGER: 907-355-4808

COMMUNICATIONS: CTAF 123.6

COMM/NAV/WEATHER REMARKS: For a toll free call to Kenai FSS dial 1-866-864-1737.