

TOLSONA LAKE SPB (58A) 0 N UTC-9(-8DT) N62°06.80' W146°02.46'

ANCHORAGE

2000 NOTAM FILE ENA

WATERWAY NW-SE: 4000X1500 (WATER)

SERVICE: S4

SEAPLANE REMARKS: Unattended. Airstrip on east side of lake is private.

Public easement across pvt property to access Tolsona Lake. Wind sock is located at the NE corner of the lake.

AIRPORT MANAGER: 907-822-3433

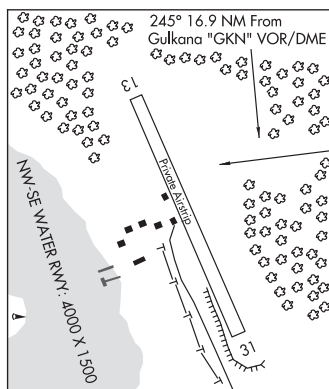
COMMUNICATIONS: CTAF 122.9

RADIO AIDS TO NAVIGATION: NOTAM FILE GKN.

GULKANA (H) (H) VORW/DME 115.6 GKN Chan 103 N62°09.23'

W145°26.84' 245° 16.9 NM to fld. 1549/17E.

COMM/NAV/WEATHER REMARKS: For a toll free call to Kenai FSS dial 1-866-864-1737.



TOTATLANIKA RIVER (9AK) 2 SW UTC-9(-8DT) N64°01.54' W148°31.34'

FAIRBANKS

2717 NOTAM FILE FAI

RWY 07-25: 780X30 (GRVL)

RWY 07: Brush.

RWY 25: Brush.

AIRPORT REMARKS: Unattended. Runway extremely hazardous, emergency use only. Rwy lctd on top of hill. Rwy rises and falls as much as 50'. Rwy slopes downhill from west to east. Land on Rwy 25, depart Rwy 07. Rwy 07-25 rough rock sfc, rock to 4". Severe turbulence in all winds. Windsock pole rust. Inoperable.

COMMUNICATIONS: CTAF 122.9

RADIO AIDS TO NAVIGATION: NOTAM FILE ENN.

NENANA (H) (H) VORTACW 115.8 ENN Chan 105 N64°35.40'

W149°04.37' 136° 36.9 NM to fld. 1601/21E.

VOR unusable:

086°-096° byd 34 NM blo 5,000'

097°-105°

310°-335° byd 33 NM blo 5,000'

336°-360° byd 33 NM blo 4,000'

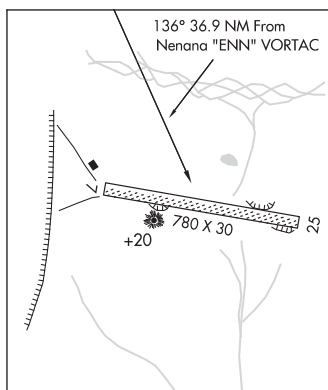
TAC AZM unusable:

097°-105°

DME unusable:

097°-105°

COMM/NAV/WEATHER REMARKS: For a toll free call to Fairbanks FSS dial 1-866-248-6516.



TRAPPER CREEK/TALKEETNA

ERA CHULITNA RIVER HELIPORT (61AK) PVT 19 N UTC-9(-8DT) N62°34.05' W150°14.15'

ANCHORAGE

960 NOTAM FILE Not insp.

HELIPAD H1: 20X20 (TURF)

HELIPAD H2: 20X20 (TURF)

HELIPORT REMARKS: Attended May-Sep 1700-0500Z†.

AIRPORT MANAGER: 907-550-8600

COMMUNICATIONS: CTAF 122.9

COMM/NAV/WEATHER REMARKS: For a toll free call to Kenai FSS dial 1-866-864-1737.

TREASURE CHEST (See KENAI on page 144)

TRIDENT BASIN SPB (See KODIAK on page 155)

TRIPOD (See ALEKNAGIK on page 39)