

**CLARKS POINT** (CLP)(PFCL) 1 E UTC-9(-8DT) N58°50.02' W158°31.76'

80 B NOTAM FILE CLP

**RWY 18-36:** 3200X60 (GRVL) MIRL

**RWY 18:** Brush.

**RWY 36:** Brush.

**SERVICE:** LGT ACTIVATE MIRL Rwy 18-36, windsock; and rot bcn—CTAF.

**AIRPORT REMARKS:** Unattended. Birds and moose invof rwy. Rwy condition not monitored, recommend visual inspection prior to LNDG. ATV cross Rwy 18 from TWY to THLD.

**AIRPORT MANAGER:** 907-842-5511

**WEATHER DATA SOURCES:** AWOS-3P 121.45 (907) 868-7311. (WX CAM)

**COMMUNICATIONS:** CTAF 122.9

Ⓡ **ANCHORAGE CENTER APP/DEP CON** 132.75

**RADIO AIDS TO NAVIGATION:** NOTAM FILE DLG.

**DILLINGHAM (H) (H) VOR/DME** 116.4 DLG Chan 111

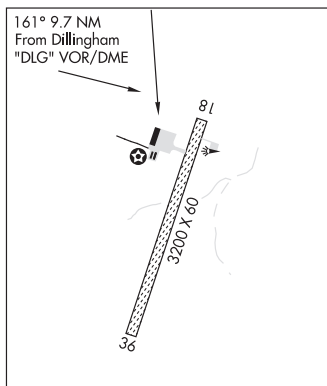
N58°59.65' W158°33.13' 161° 9.7 NM to fld. 81/15E.

**COMM/NAV/WEATHER REMARKS:** For a toll free call to Kenai FSS dial 1-866-864-1737

**KODIAK**

L-2J, 3C

IAP



**CLEAR** (Z84)(PACL) 3 SE UTC-9(-8DT) N64°18.02' W149°06.99'

559 B NOTAM FILE FAI

**RWY 01-19:** H3997X100 (ASPH) MIRL 0.4% up S

**RWY 01:** Trees. Rgt tfc.

**RWY 19:** Trees.

**SERVICE:** LGT ACTVT MIRL Rwy 01-19—CTAF.

**AIRPORT REMARKS:** Unattended. Alert: avoid rstrd area 1 NM W & pvt arpt 3 NM SW. 253 ft ant 4000 ft E. Glider act Apr-Sep on & invof arpt. Rwy cond not mnt; rcmd visual insp prior to lndg. Rwy 01-19 safety area; 300 ft ovrn at each end. Rwy 01 has thld mkr. Rwy 19 has thld mkr. Twy C clsd durg winter.

**AIRPORT MANAGER:** 907-451-5280

**COMMUNICATIONS:** CTAF 122.9

**RADIO AIDS TO NAVIGATION:** NOTAM FILE ENN.

**NENANA (H) (H) VORTACW** 115.8 ENN Chan 105 N64°35.40'

W149°04.37' 163° 17.5 NM to fld. 1601/21E.

VOR unusable:

086°-096° byd 34 NM blo 5,000'

097°-105°

310°-335° byd 33 NM blo 5,000'

336°-360° byd 33 NM blo 4,000'

TAC AZM unusable:

097°-105°

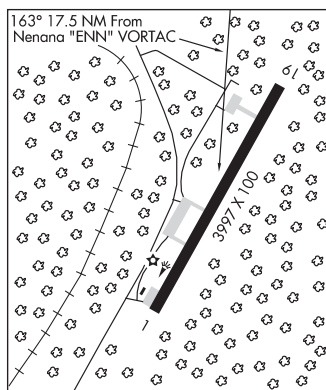
DME unusable:

097°-105°

**COMM/NAV/WEATHER REMARKS:** Ctn: high level radio energy; psbl airborne elec sys dmg. Rmn clear of R-2206 when actv; mnt 133.25 for status.

**FAIRBANKS**

H-1B, 2K, L-3A, 3D, 4J



**CLEAR CREEK** (See FAIRBANKS (FT WAINWRIGHT) on page 109)

**CLEAR CREEK** (See YUKON CHARLEY RIVERS on page 273)